



Hazard Management Services, Inc.

207 McHenry Ave. • Modesto, CA 95354
(209) 551-2000 • www.hazmanage.com

Central California Conference of Seventh-Day Adventist

Peninsula Adventist School

**US EPA AHERA Re-Inspection
March 2017**

HAZARD MANAGEMENT SERVICES, INC.

Central California Conference of 7th

Peninsula Adventist School

March 1, 2017

This report is broken into three main sections:

1. This Cover Letter, which is a brief summary of the suspect materials found during the inspection.
2. A Functional Space Notes (FSN) report, which is a room by room breakdown of all materials found during the inspection. The FSN is the report that is most useful for creating demolition or renovation specifications, or for notifying contractors who are working on site.
3. A Homogeneous Material Record (HMR), which is a material by material breakdown of all materials found during the inspection that are suspected to contain asbestos. This HMR satisfies the EPA's AHERA regulations for listing asbestos-containing materials. It can, also, be useful when planning renovation/demolition projects, especially those that will have all asbestos-containing materials removed.

Also, included in this report, you will find HMS, Inc.'s Special Notes page concerning possible problems with drywall sampling and renovation/demolition projects, and a list of commonly used abbreviations that are found throughout the reports noted above.

HAZARD MANAGEMENT SERVICES, INC.

Central California Conference of 7th

Peninsula Adventist School

March 1, 2017

At this site, Peninsula Adventist School, all non-friable materials listed below were inspected and were found to be in good condition. These materials will remain non-friable as long as they are not sanded, drilled, cut or otherwise abused so that a powder is produced. Removal of these materials will require an asbestos abatement contractor, in most cases.

12" Ceramic Tile and Grout-White Marble	— MISC — Assumed	12" VFT and Mastic - Tan Squares	— MISC — Assumed
18" Ceramic Tile and Grout - White	— MISC — Assumed	2" Baseboard and Mastic - Beige	— MISC — Assumed
2" Baseboard and Mastic - Tan	— MISC — Assumed	6" Baseboard and Mastic - White	— MISC — Assumed
9" VFT and Mastic - Tan	— MISC — Assumed	Carpet and Mastic - Aqua	— MISC — Assumed
Carpet and Mastic - Brown	— MISC — Assumed	Carpet and Mastic - Green	— MISC — Assumed
Carpet and Mastic - Grey	— MISC — Assumed	Carpet and Mastic - Light Green	— MISC — Assumed
Carpet and Mastic - Orange	— MISC — Assumed	Carpet and Mastic - Red	— MISC — Assumed
Carpet and Mastic-Red/Orange	— MISC — Assumed	Drywall - Bare	— MISC — Assumed
Drywall - Knockdown Texture	— MISC — Assumed	Drywall - Medium Texture	— MISC — Assumed
Drywall - Rough Texture	— MISC — Assumed	Drywall - Smooth Texture	— MISC — Assumed
Exterior Stucco	— MISC — Assumed	FRP - Green Squares	— MISC — Assumed
Linoleum and Mastic - Beige Squares	— MISC — Assumed	Linoleum and Mastic - Squares	— MISC — Assumed
Linoleum and Mastic - Wood Squares	— MISC — Assumed	Masonite - Beige	— MISC — Assumed
Moisture Barrier Paper	— MISC — Assumed	Plaster - Smooth Finish	— MISC — Assumed
Plaster - Stucco Finish	— MISC — Assumed	Transite Flue Pipe	— MISC — Assumed
Vinyl Floor Tile and Mastic	— MISC — Assumed		

The following non-friable thermal system insulation (TSI) materials were found at this site. Even though these materials are technically friable by definition, they may be treated as non-friable materials as long as they remain in an intact condition. A Form C and an evaluation sheet are included for these materials.

NONE

HAZARD MANAGEMENT SERVICES, INC.

Central California Conference of 7th

Peninsula Adventist School

March 1, 2017

The following friable asbestos-containing materials were noted at this site. Friable materials are those that can release asbestos fibers with a minimum of contact or disturbance. Friable asbestos-containing materials can only be handled by an asbestos abatement contractor. Evaluation sheets and Form Cs are provided for the materials listed.

NONE

See "Special Notes" section concerning drywall sampling and renovations/demolitions. This page contains valuable information which must be considered before any alterations, modernization, renovations or demolitions occur.

Following the "Special Notes" and "Abbreviations" pages you will find the "Homogeneous Materials Record (HMR)". The HMR lists each suspect material (asbestos-containing or not), sample numbers, the location of the material in each building, the percent asbestos of each suspect material, the approximate square footage of each material in these locations and the friability of the material. When you use the HMR sheets you can pick a material and then go through the list and note every location where that material is located.

All materials not identified in this report that are discovered at the site must be assumed to contain asbestos until sampled and proven otherwise. Although there may be materials that have been excluded from the AHERA Management Plan by a letter stating it is non-asbestos-containing, the EPA's "National Emission Standards for Hazardous Air Pollutants (NESHAP)" does not allow for materials to be considered non-asbestos through the use of written documentation. This makes it necessary to bulk sample materials to prove they are non-asbestos-containing prior to renovations, demolitions and modernizations, no matter when they were installed.

Be sure to add this report to your management plan at the facilities office.

Date Printed: 5/5/2017

HAZARD MANAGEMENT SERVICES, INC.

Special Note

SPECIAL NOTE NO. 1 - DRYWALL/SHEETROCK

Drywall and its components continue to present problems both for our clients and for us. The inconsistency of sample results indicates that even the EPA/AHERA method for sampling drywall is inadequate. Although three to fifteen or more drywall samples may have been collected at your site(s), the results may not be representative of what is present. Asbestos sometimes is found in the drywall itself, in its tape and/or joint compound or in the final texture coat applied to finish the appearance. It can be found in any combination in these materials. It can also be found in patching materials used to repair damaged drywall. Paint added to otherwise non-homogeneous materials can also produce inappropriate assumptions that all materials are the same.

To account for the variability in drywall construction we strongly advise that any substantial renovation project involving drywall be preceded by a comprehensive evaluation of the materials designated for handling.

SPECIAL NOTE NO. 2 - RENOVATIONS/DEMOLITIONS

Please be aware that many possible asbestos-containing materials were specifically exempted from inspection and identification by the AHERA sampling protocol. These exempted materials included roofing materials, most exterior plasters, exterior window putty, exterior transite panels and shingles, some exterior thermal system insulation and a few other materials. AHERA also exempted heat resistant counter tops and transite blackboards and a few other materials found inside of buildings.

While these materials are exempted by AHERA, they are not exempted by Cal/OSHA or EPA's regulation in its "National Emission Standards for Hazardous Air Pollutants" (NESHAP). Therefore, any renovation activity involving these materials must be preceded by a sampling project to identify asbestos-containing materials which may be regulated by these agencies or the local Air Pollution Control District. You cannot rely on you AHERA reports to identify all of these additional materials.

SPECIAL NOTE NO. 3 - NEW MATERIALS AND BUILDINGS

Materials installed since the previous inspection must be certified, in writing, as non-asbestos containing materials, sampled to test for asbestos content, or assumed to contain asbestos. This certification must be from the product manufacturer or the construction engineer on the project during which the new materials were installed. This certification must be placed in your management plan.

Buildings installed (portables) or constructed since October 12, 1988 must be certified to be asbestos-containing building material (ACBMs) free by the manufacturer (portables), architect or construction engineer, or they must be inspected for ACBMs. This certification must be placed in the management plan for the site at which the new building was installed or constructed.

New sites, built after October 12, 1988, require a Management Plan. If ACBM free certification letters are obtainable for all buildings at the new site, no inspection is required, although a Management Plan must still be written.

SPECIAL NOTE NO. 4 - Materials Containing Trace Amounts of Asbestos

Materials containing trace amounts of asbestos are not covered by the AHERA regulations as the EPA does not consider them to be asbestos-containing materials. However, Cal/OSHA does consider materials containing trace amounts of asbestos (down to 0.1%) to be asbestos-containing, and any level of asbestos in a material must be considered a potential exposure hazard.

Materials listed as containing trace amounts of asbestos require special handling procedures - per Cal/OSHA and training for the employees working with these materials. Waste materials containing less than 1% asbestos must be "point counted" or handled as a hazardous waste.

Date Printed: 5/5/2017

HAZARD MANAGEMENT SERVICES, INC.

Abbreviations

The following list includes most of the abbreviations you may find within this report.

<u>ACT:</u>	Acoustic Ceiling/Wall Tile
<u>B-I-I:</u>	Blown-In-Insulation
<u>BLR:</u>	Boiler
<u>C'Ing</u>	Ceiling
<u>Carp:</u>	Carpet
<u>Carp&Mast</u>	Carpet and Mastic
<u>Bsbrd&Glue</u>	Baseboard and Glue
<u>DIP:</u>	Drop In Panel
<u>DIT:</u>	Drop In Tile
<u>FCP:</u>	False Ceiling Panel
<u>FRP:</u>	Fiberglass Reinforced Plastic
<u>FG:</u>	Fiberglass
<u>HMR #:</u>	Homogeneous Material Number
<u>HTR:</u>	Heater
<u>LINO:</u>	Linoleum
<u>MISC</u>	Miscellaneous
<u>PW:</u>	Pipe Wrap
<u>S-O-C:</u>	Sprayed-On Ceiling
<u>SOFP:</u>	Sprayed on Fire Proofing
<u>S-O-W:</u>	Sprayed-On Wall
<u>SURF:</u>	Surfacing
<u>T-O-C:</u>	Troweled-On Ceiling
<u>T-O-W:</u>	Troweled-On Wall
<u>TSI:</u>	Thermal System Insulation
<u>VFT:</u>	Vinyl Floor Tile
<u>W & C:</u>	Walls and Ceilings

Functional Space Notes
HAZARD MANAGEMENT SERVICES, INC.
Three Year Reinspection

Client: Central California Conference of 7th Day Adventist **Site:** Peninsula Adventist School
HMS Project Number: M17005U **Date of Inspection:** March 1, 2017

Table of Contents

01 - Classroom Building 1	1
02 - Classroom Building 2	5
03 - Office Building	7
04 - Chapel Building	11

Functional Space Notes

HAZARD MANAGEMENT SERVICES, INC.

Three Year Reinspection

Client: Central California Conference of 7th Day Adventist **Site:** Peninsula Adventist School

HMS Project Number: M17005U

Date of Inspection: March 1, 2017

Materials	Material Class	Percent Asbestos	Hmgns. Matrl #	Sampled Here?	Footage Sq/Ln/Jnts	Friable? Yes/No
Building: 01 - Classroom Building 1		Room: 01 - Classroom - 30 x 21 x 12				
Floor: 9" VFT and Mastic - Tan	MISC	Assumed	23		630 sq	No
<i>Comment: Material in GOOD condition. No change in material condition. Under the carpet in the space.</i>						
Floor: Carpet and Mastic - Grey	MISC	Assumed	14		630 sq	No
<i>Comment: Material in GOOD condition. No change in material condition.</i>						
Baseboard: Wood	NON	Non-Suspect				
Walls: Wood	NON	Non-Suspect				
Ceiling: Wood	NON	Non-Suspect				
Building: 01 - Classroom Building 1		Room: 02 - Resource Room - 15 x 7 x 8				
Floor: Carpet and Mastic - Light Green	MISC	Assumed	24		105 sq	No
<i>Comment: Material in GOOD condition. No change in material condition.</i>						
Baseboard: 2" Baseboard and Mastic - Tan	MISC	Assumed	25		33 ln	No
<i>Comment: Material in GOOD condition. No change in material condition.</i>						
Walls: Drywall - Smooth Texture	MISC	Assumed	2		264 sq	No
<i>Comment: Material in GOOD condition. No change in material condition.</i>						
Walls: Plaster - Stucco Finish	MISC	Assumed	26		88 sq	No
<i>Comment: Material in GOOD condition. No change in material condition. This wall appears to be from original construction and space added onto building.</i>						
Ceiling: Drywall - Smooth Texture	MISC	Assumed	2		105 sq	No
<i>Comment: Material in GOOD condition. No change in material condition.</i>						
Building: 01 - Classroom Building 1		Room: 03- Work Room - 21 x 7 x 10				
Floor: Concrete	NON	Non-Suspect				
Walls: Drywall - Smooth Texture	MISC	Assumed	2		420 sq	No
<i>Comment: Material in GOOD condition. No change in material condition.</i>						
Walls: Plaster - Stucco Finish	MISC	Assumed	26		140 sq	No
<i>Comment: Material in GOOD condition. No change in material condition.</i>						
Ceiling: Wood	NON	Non-Suspect				

Functional Space Notes

HAZARD MANAGEMENT SERVICES, INC.

Three Year Reinspection

Client: Central California Conference of 7th Day Adventist Site: Peninsula Adventist School

HMS Project Number: M17005U

Date of Inspection: March 1, 2017

Materials	Material Class	Percent Asbestos	Hmgn. Matrl #	Sampled Here?	Footage Sq/Ln/Jnts	Friable? Yes/No
Building: 01 - Classroom Building 1		Room: 04 - Girls Restroom Foyer - 3 x 4 x 12				
Floor: 9" VFT and Mastic - Tan	MISC	Assumed	23		12 sq	No
<i>Comment: Material in GOOD condition. No change in material condition.</i>						
Floor: Carpet and Mastic- Red/Orange	MISC	Assumed	900			No
<i>Comment: Material in GOOD condition. No change in material condition.</i>						
Baseboard: Wood	NON	Non-Suspect				
Walls: Drywall - Smooth Texture	MISC	Assumed	2		42 sq	No
<i>Comment: Material in GOOD condition. No change in material condition.</i>						
Walls: Wood	NON	Non-Suspect				
Ceiling: Wood	NON	Non-Suspect				
Pipes: Transite Flue Pipe	MISC	Assumed	28		5 ln	No
<i>Comment: Material in GOOD condition. No change in material condition. Pipe is visible above the end of the walls in space. Appears to be transite flue pipe.</i>						
Removed Materials:						
Floor: Carpet and Mastic - Aqua	MISC	Assumed	27		12 sq	No
<i>Comment: Material in GOOD condition. Material has been REMOVED. Comment: Removed Removed Material is just laying over vinyl floor tiles and does not have a mastic.</i>						
Building: 01 - Classroom Building 1		Room: 05 - Girls Restroom - 6 x 6 x 8				
Floor: 9" VFT and Mastic - Tan	MISC	Assumed	23		36 sq	No
<i>Comment: Material in GOOD condition. No change in material condition. Material appears to be below the linoleum flooring by looking at threshold.</i>						
Floor: Linoleum and Mastic - Wood Squares	MISC	Assumed	29		36 sq	No
<i>Comment: Material in GOOD condition. No change in material condition.</i>						
Baseboard: Wood	NON	Non-Suspect				
Walls: Plaster - Smooth Finish	MISC	Assumed	30		192 sq	No
<i>Comment: Material in GOOD condition. No change in material condition.</i>						
Ceiling: Plaster - Smooth Finish	MISC	Assumed	30		36 sq	No
<i>Comment: Material in GOOD condition. No change in material condition.</i>						

Functional Space Notes

HAZARD MANAGEMENT SERVICES, INC.

Three Year Reinspection

Client: Central California Conference of 7th Day Adventist **Site:** Peninsula Adventist School

HMS Project Number: M17005U

Date of Inspection: March 1, 2017

Materials	Material Class	Percent Asbestos	Hmgns. Matrl #	Sampled Here?	Footage Sq/Ln/Jnts	Friable? Yes/No
Building: 01 - Classroom Building 1		Room: 06 - Boys Restroom Foyer - 3 x 4 x 8				
Floor: 9" VFT and Mastic - Tan	MISC	Assumed	23		12 sq	No
<i>Comment: Material in GOOD condition. No change in material condition.</i>						
Floor: Carpet and Mastic- Red/Orange	MISC	Assumed	900		12 sq	No
<i>Comment: Material in GOOD condition. No change in material condition.</i>						
Baseboard: Wood	NON	Non-Suspect				
Walls: Wood	NON	Non-Suspect				
Ceiling: Wood	NON	Non-Suspect				
Removed Materials:						
Floor: Carpet and Mastic - Aqua	MISC	Assumed	27		12 sq	No
<i>Comment: Material in GOOD condition. Material has been REMOVED. Comment: Removed Removed Material is just laying over vinyl floor tiles and does not have a mastic.</i>						
Building: 01 - Classroom Building 1		Room: 07 - Boys Restroom - 6 x 6 x 8				
Floor: 18" Ceramic Tile and Grout - White	MISC	Assumed	20		36 sq	No
<i>Comment: Material in GOOD condition. No change in material condition.</i>						
Floor: 9" VFT and Mastic - Tan	MISC	Assumed	23		36 sq	No
<i>Comment: Material in GOOD condition. No change in material condition. Material appears to exist still below the ceramic tile finish. Destructive sampling required to verify.</i>						
Walls: Plaster - Smooth Finish	MISC	Assumed	30		192 sq	No
<i>Comment: Material in GOOD condition. No change in material condition.</i>						
Ceiling: Plaster - Smooth Finish	MISC	Assumed	30		36 sq	No
<i>Comment: Material in GOOD condition. No change in material condition.</i>						

Functional Space Notes

HAZARD MANAGEMENT SERVICES, INC.

Three Year Reinspection

Client: Central California Conference of 7th Day Adventist **Site:** Peninsula Adventist School

HMS Project Number: M17005U

Date of Inspection: March 1, 2017

Materials		Material Class	Percent Asbestos	Hmgns. Matrl #	Sampled Here?	Footage Sq/Ln/Jnts	Friable? Yes/No
Building: 01 - Classroom Building 1		Room: 08 - Exterior Furnace Closet - 3 x 3 x 8					
Floor:	9" VFT and Mastic - Tan	MISC	Assumed	23		9 sq	No
	<i>Comment: Material in GOOD condition. No change in material condition.</i>						
Baseboard:	Wood	NON	Non-Suspect				
Walls:	Drywall - Smooth Texture	MISC	Assumed	2		24 sq	No
	<i>Comment: Material in GOOD condition. No change in material condition. Backside of drywall wall visible in space.</i>						
Walls:	Wood	NON	Non-Suspect				
Ceiling:	Drywall - Knockdown Texture	MISC	Assumed	31		9 sq	No
	<i>Comment: Material in GOOD condition. No change in material condition.</i>						
Building: 01 - Classroom Building 1		Room: 09 - Exterior Water Heater Closet - 3 x 3 x 8					
Floor:	Wood	NON	Non-Suspect				
Walls:	Drywall - Bare	MISC	Assumed	32		96 sq	No
	<i>Comment: Material in GOOD condition. No change in material condition. Material Comment: Material does not include a skim coat or joint compound layer.</i>						
Ceiling:	Drywall - Bare	MISC	Assumed	32		9 sq	No
	<i>Comment: Material in GOOD condition. No change in material condition. Material Comment: Material does not include a skim coat or joint compound layer.</i>						
Room Comments:	A newer water heater is in this space. A key to the door could not be provided, but is accessible as door is installed backwards.						

Functional Space Notes

HAZARD MANAGEMENT SERVICES, INC.

Three Year Reinspection

Client: Central California Conference of 7th Day Adventist **Site:** Peninsula Adventist School

HMS Project Number: M17005U

Date of Inspection: March 1, 2017

Materials		Material Class	Percent Asbestos	Hmgns. Matrl #	Sampled Here?	Footage Sq/Ln/Jnts	Friable? Yes/No
Building: 02 - Classroom Building 2		Room: 01 - Classroom - 52 x 24 x 8					
Floor:	Carpet and Mastic - Grey	MISC	Assumed	14		1248 sq	No
	<i>Comment: Material in GOOD condition. No change in material condition.</i>						
Baseboard:	Wood	NON	Non-Suspect				
Walls:	Drywall - Smooth Texture	MISC	Assumed	2		1216 sq	No
	<i>Comment: Material in GOOD condition. No change in material condition.</i>						
Ceiling:	Drywall - Smooth Texture	MISC	Assumed	2		1248 sq	No
	<i>Comment: Material in GOOD condition. No change in material condition.</i>						
Building: 02 - Classroom Building 2		Room: 02 - Staff Workroom - 10 x 15 x 12					
Floor:	Carpet and Mastic - Grey	MISC	Assumed	14		150 sq	No
	<i>Comment: Material in GOOD condition. No change in material condition.</i>						
Baseboard:	Wood	NON	Non-Suspect				
Walls:	Drywall - Rough Texture	MISC	Assumed	15		600 sq	No
	<i>Comment: Material in GOOD condition. No change in material condition.</i>						
Ceiling:	Sprayed-On-Ceiling Materials	MISC	None Detected	16	16A, 16B, 16C	600 sq	
Building: 02 - Classroom Building 2		Room: 03 - Kitchen - 18 x 10 x 8					
Floor:	Linoleum and Mastic - Beige Squares	MISC	Assumed	18		135 sq	No
	<i>Comment: Material in GOOD condition. No change in material condition.</i>						
Floor:	Linoleum and Mastic - Squares	MISC	Assumed	17		45 sq	No
	<i>Comment: Material in GOOD condition. No change in material condition.</i>						
Baseboard:	Wood	NON	Non-Suspect				
Walls:	Drywall - Smooth Texture	MISC	Assumed	2		448 sq	No
	<i>Comment: Material in GOOD condition. No change in material condition.</i>						
Ceiling:	Drywall - Smooth Texture	MISC	Assumed	2		180 sq	No
	<i>Comment: Material in GOOD condition. No change in material condition.</i>						
Building: 02 - Classroom Building 2		Room: 04 - Custodial Closet - 4 x 12 x 8					
Floor:	Linoleum and Mastic - Mauve Crackles	MISC	None Detected	19	19A	48 sq	
Baseboard:	Wood	NON	Non-Suspect				
Walls:	Drywall - Smooth Texture	MISC	Assumed	2		256 sq	No
	<i>Comment: Material in GOOD condition. No change in material condition.</i>						
Ceiling:	Drywall - Smooth Texture	MISC	Assumed	2		48 sq	No
	<i>Comment: Material in GOOD condition. No change in material condition.</i>						

Functional Space Notes

HAZARD MANAGEMENT SERVICES, INC.

Three Year Reinspection

Client: Central California Conference of 7th Day Adventist **Site:** Peninsula Adventist School
HMS Project Number: M17005U **Date of Inspection:** March 1, 2017

Materials	Material Class	Percent Asbestos	Hmgns. Matrl #	Sampled Here?	Footage Sq/Ln/Jnts	Friable? Yes/No
Building: 02 - Classroom Building 2		Room: 05 - Girls Restroom - 10 x 6 x 8				
Floor: 18" Ceramic Tile and Grout - White <i>Comment: Material in GOOD condition. No change in material condition.</i>	MISC	Assumed	20		60 sq	No
Baseboard: 6" Baseboard and Mastic - White <i>Comment: Material in GOOD condition. No change in material condition.</i>	MISC	Assumed	21		32 ln	No
Walls: Masonite - Beige <i>Comment: Material in GOOD condition. No change in material condition.</i>	MISC	Assumed	22		256 sq	No
Ceiling: Masonite - Beige <i>Comment: Material in GOOD condition. No change in material condition.</i>	MISC	Assumed	22		60 sq	No
Building: 02 - Classroom Building 2		Room: 06 - Boys Restroom - 6 x 7 x 8				
Floor: 18" Ceramic Tile and Grout - White <i>Comment: Material in GOOD condition. No change in material condition.</i>	MISC	Assumed	20		42 sq	No
Baseboard: 6" Baseboard and Mastic - White <i>Comment: Material in GOOD condition. No change in material condition.</i>	MISC	Assumed	21		26 ln	No
Walls: Masonite - Beige <i>Comment: Material in GOOD condition. No change in material condition.</i>	MISC	Assumed	22		208 sq	No
Ceiling: Masonite - Beige <i>Comment: Material in GOOD condition. No change in material condition.</i>	MISC	Assumed	22		42 sq	No

Functional Space Notes

HAZARD MANAGEMENT SERVICES, INC.

Three Year Reinspection

Client: Central California Conference of 7th Day Adventist **Site:** Peninsula Adventist School

HMS Project Number: M17005U

Date of Inspection: March 1, 2017

Materials		Material Class	Percent Asbestos	Hmgns. Matrl #	Sampled Here?	Footage Sq/Ln/Jnts	Friable? Yes/No
Building: 03 - Office Building		Room: 01 - Office - 9 x 10 x 9					
Floor:	Carpet and Mastic - Brown	MISC	Assumed	1		90 sq	No
	<i>Comment: Material in GOOD condition. No change in material condition.</i>						
Floor:	Vinyl Floor Tile and Mastic	MISC	Assumed	7		90 sq	No
	<i>Comment: Material in GOOD condition. No change in material condition. Floor tiles assumed to exist below carpeting in the space. Could not verify without destructive sampling.</i>						
Baseboard:	Wood	NON	Non-Suspect				
Walls:	Drywall - Smooth Texture	MISC	Assumed	2		342 sq	No
	<i>Comment: Material in GOOD condition. No change in material condition.</i>						
Ceiling:	Drywall - Smooth Texture	MISC	Assumed	2		90 sq	No
	<i>Comment: Material in GOOD condition. No change in material condition.</i>						
Building: 03 - Office Building		Room: 02 - Office 2 - 8 x 10 x 9					
Floor:	Carpet and Mastic - Green	MISC	Assumed	3		80 sq	No
	<i>Comment: Material in GOOD condition. No change in material condition.</i>						
Floor:	Vinyl Floor Tile and Mastic	MISC	Assumed	7		80 sq	No
	<i>Comment: Material in GOOD condition. No change in material condition. Assumed to exist below the carpet in space.</i>						
Baseboard:	Wood	NON	Non-Suspect				
Walls:	Drywall - Smooth Texture	MISC	Assumed	2		324 sq	No
	<i>Comment: Material in GOOD condition. No change in material condition.</i>						
Ceiling:	Drywall - Smooth Texture	MISC	Assumed	2		80 sq	No
	<i>Comment: Material in GOOD condition. No change in material condition.</i>						

Functional Space Notes

HAZARD MANAGEMENT SERVICES, INC.

Three Year Reinspection

Client: Central California Conference of 7th Day Adventist **Site:** Peninsula Adventist School

HMS Project Number: M17005U

Date of Inspection: March 1, 2017

Materials		Material Class	Percent Asbestos	Hmgns. Sampled Matrl # Here?	Footage Sq/Ln/Jnts	Friable? Yes/No
Building: 03 - Office Building		Room: 03 - Restroom - 8 x 5 x 8				
Floor:	12" VFT and Mastic - Tan Squares	MISC	Assumed	4	40 sq	No
	<i>Comment: Material in GOOD condition. No change in material condition.</i>					
Baseboard:	2" Baseboard and Mastic - Beige	MISC	Assumed	5	26 ln	No
	<i>Comment: Material in GOOD condition. No change in material condition. A portion of this baseboard has been painted pink.</i>					
Walls:	Drywall - Smooth Texture	MISC	Assumed	2	208 sq	No
	<i>Comment: Material in GOOD condition. No change in material condition.</i>					
Walls:	FRP - Green Squares	MISC	Assumed	6	104 sq	No
	<i>Comment: Material in GOOD condition. No change in material condition. Wainscoating over drywall walls.</i>					
Ceiling:	Drywall - Smooth Texture	MISC	Assumed	2	40 sq	No
	<i>Comment: Material in GOOD condition. No change in material condition.</i>					
Building: 03 - Office Building		Room: 04 - Classroom - 27 x 20 x 8				
Floor:	Carpet and Mastic - Brown	MISC	Assumed	1	540 sq	No
	<i>Comment: Material in GOOD condition. No change in material condition.</i>					
Floor:	Vinyl Floor Tile and Mastic	MISC	Assumed	7	540 sq	No
	<i>Comment: Material in GOOD condition. No change in material condition. Floor tiles are below the carpet in space. Could not determine size of tiles during inspection without using destructive methods.</i>					
Baseboard:	Wood	NON	Non-Suspect			
Walls:	Drywall - Smooth Texture	MISC	Assumed	2	752 sq	No
	<i>Comment: Material in GOOD condition. No change in material condition.</i>					
Ceiling:	Drywall - Smooth Texture	MISC	Assumed	2	540 sq	No
	<i>Comment: Material in GOOD condition. No change in material condition.</i>					

Functional Space Notes

HAZARD MANAGEMENT SERVICES, INC.

Three Year Reinspection

Client: Central California Conference of 7th Day Adventist Site: Peninsula Adventist School
HMS Project Number: M17005U Date of Inspection: March 1, 2017

Materials	Material Class	Percent Asbestos	Hmgns. Matrl #	Sampled Here?	Footage Sq/Ln/Jnts	Friable? Yes/No
Building: 03 - Office Building Room: 05 - Meeting Room - 15 x 10 x 8						
Floor: Carpet and Mastic - Orange <i>Comment: Material in GOOD condition. No change in material condition.</i>	MISC	Assumed	8		150 sq	No
Floor: Vinyl Floor Tile and Mastic <i>Comment: Material in GOOD condition. No change in material condition. Assumed to exist below the carpet in space.</i>	MISC	Assumed	7		150 sq	No
Walls: Drywall - Smooth Texture <i>Comment: Material in GOOD condition. No change in material condition.</i>	MISC	Assumed	2		300 sq	No
Walls: Metal Partition Wall	NON	Non-Suspect				
Ceiling: Drywall - Smooth Texture <i>Comment: Material in GOOD condition. No change in material condition.</i>	MISC	Assumed	2		150 sq	No
<i>Room Comments: A metal partition wall separates the two meeting rooms.</i>						
Building: 03 - Office Building Room: 06 - Meeting Room 2 - 15 x 10 x 8						
Floor: Carpet and Mastic - Orange <i>Comment: Material in GOOD condition. No change in material condition.</i>	MISC	Assumed	8		150 sq	No
Floor: Vinyl Floor Tile and Mastic <i>Comment: Material in GOOD condition. No change in material condition. Assumed to exist below the carpet in space.</i>	MISC	Assumed	7		150 sq	No
Walls: Drywall - Smooth Texture <i>Comment: Material in GOOD condition. No change in material condition.</i>	MISC	Assumed	2		300 sq	No
Walls: Metal Partition Wall	NON	Non-Suspect				
Ceiling: Drywall - Smooth Texture <i>Comment: Material in GOOD condition. No change in material condition.</i>	MISC	Assumed	2		150 sq	No
<i>Room Comments: A metal partition wall separates the two meeting rooms.</i>						
Building: 03 - Office Building Room: 07 - Attic - 62 x 20 x 4						
Floor: Wood <i>Comment: Drywall ceiling materials visible below roof joists. A walkway exists through the middle of the attic.</i>	NON	Non-Suspect				
Walls: Wood	NON	Non-Suspect				
Ceiling: Wood	NON	Non-Suspect				
Pipes: Transite Flue Pipe <i>Comment: Material in GOOD condition. No change in material condition. Visible at access to attic from Office 2.</i>	MISC	Assumed	28		4 ln	No

Functional Space Notes

HAZARD MANAGEMENT SERVICES, INC.

Three Year Reinspection

Client: Central California Conference of 7th Day Adventist **Site:** Peninsula Adventist School
HMS Project Number: M17005U **Date of Inspection:** March 1, 2017

Materials		Material Class	Percent Asbestos	Hmgns. Matri #	Sampled Here?	Footage Sq/Ln/Jnts	Friable? Yes/No
Building: 03 - Office Building		Room: 08 - Basement - 62 x 20 x 6					
Floor:	Dirt	NON	Non-Suspect				
Walls:	Moisture Barrier Paper	MISC	Assumed	13		984 sq	No
	<i>Comment: Material in GOOD condition. No change in material condition. Wood studs over the paper as the paper is for exterior finishes.</i>						
Ceiling:	Wood	NON	Non-Suspect				
Pipes:	Fiberglass Insulation	NON	Non-Suspect				
	<i>Comment: Around metal pipes. No suspect duct tape could be identified during inspection.</i>						
Room Comments:	<i>Access only through a movable panel that was not secured. Could not access space fully to verify what suspect materials may exist.</i>						

Functional Space Notes

HAZARD MANAGEMENT SERVICES, INC.

Three Year Reinspection

Client: Central California Conference of 7th Day Adventist **Site:** Peninsula Adventist School

HMS Project Number: M17005U

Date of Inspection: March 1, 2017

Materials		Material Class	Percent Asbestos	Hmgns. Sampled Matrl # Here?	Footage Sq/Ln/Jnts	Friable? Yes/No
Building: 04 - Chapel Building		Room: 01 - Chapel Foyer - 9 x 6 x 8				
Floor:	12" Ceramic Tile and Grout-White Marble <i>Comment: Material in GOOD condition. No change in material condition.</i>	MISC	Assumed	9	54 sq	No
Baseboard:	Wood	NON	Non-Suspect			
Walls:	Drywall - Medium Texture <i>Comment: Material in GOOD condition. No change in material condition.</i>	MISC	Assumed	10	180 sq	No
Ceiling:	Drywall - Medium Texture <i>Comment: Material in GOOD condition. No change in material condition.</i>	MISC	Assumed	10	54 sq	No
Building: 04 - Chapel Building		Room: 02 - Womens Restroom - 8 x 7 x 8				
Floor:	12" Ceramic Tile and Grout-White Marble <i>Comment: Material in GOOD condition. No change in material condition.</i>	MISC	Assumed	9	56 sq	No
Baseboard:	Wood	NON	Non-Suspect			
Walls:	Drywall - Medium Texture <i>Comment: Material in GOOD condition. No change in material condition.</i>	MISC	Assumed	10	240 sq	No
Ceiling:	Drywall - Medium Texture <i>Comment: Material in GOOD condition. No change in material condition.</i>	MISC	Assumed	10	56 sq	No
Building: 04 - Chapel Building		Room: 03 - Mens Restroom - 8 x 4 x 8				
Floor:	12" Ceramic Tile and Grout-White Marble <i>Comment: Material in GOOD condition. No change in material condition.</i>	MISC	Assumed	9	32 sq	No
Baseboard:	Wood	NON	Non-Suspect			
Walls:	Drywall - Medium Texture <i>Comment: Material in GOOD condition. No change in material condition.</i>	MISC	Assumed	10	192 sq	No
Ceiling:	Drywall - Medium Texture <i>Comment: Material in GOOD condition. No change in material condition.</i>	MISC	Assumed	10	32 sq	No

Functional Space Notes

HAZARD MANAGEMENT SERVICES, INC.

Three Year Reinspection

Client: Central California Conference of 7th Day Adventist **Site:** Peninsula Adventist School

HMS Project Number: M17005U

Date of Inspection: March 1, 2017

Materials		Material Class	Percent Asbestos	Hmgns. Sampled Matrl # Here?	Footage Sq/Ln/Jnts	Friable? Yes/No
Building: 04 - Chapel Building		Room: 04 - Storage Room - 8 x 5 x 8				
Floor:	12" Ceramic Tile and Grout-White Marble <i>Comment: Material in GOOD condition. No change in material condition.</i>	MISC	Assumed	9	40 sq	No
Baseboard:	Wood	NON	Non-Suspect			
Walls:	Drywall - Medium Texture <i>Comment: Material in GOOD condition. No change in material condition.</i>	MISC	Assumed	10	208 sq	No
Ceiling:	Drywall - Medium Texture <i>Comment: Material in GOOD condition. No change in material condition.</i>	MISC	Assumed	10	40 sq	No
Building: 04 - Chapel Building		Room: 05 - Chapel AV Room - 4 x 3 x 8				
Floor:	Carpet and Mastic - Red <i>Comment: Material in GOOD condition. No change in material condition.</i>	MISC	Assumed	11	12 sq	No
Baseboard:	Wood	NON	Non-Suspect			
Walls:	Drywall - Medium Texture <i>Comment: Material in GOOD condition. No change in material condition.</i>	MISC	Assumed	10	112 sq	No
Ceiling:	Drywall - Medium Texture <i>Comment: Material in GOOD condition. No change in material condition.</i>	MISC	Assumed	10	12 sq	No
Building: 04 - Chapel Building		Room: 06 - Chapel Storage Closet - 4 x 3 x 8				
Floor:	Carpet and Mastic - Red <i>Comment: Material in GOOD condition. No change in material condition.</i>	MISC	Assumed	11	12 sq	No
Baseboard:	Wood	NON	Non-Suspect			
Walls:	Drywall - Medium Texture <i>Comment: Material in GOOD condition. No change in material condition.</i>	MISC	Assumed	10	112 sq	No
Ceiling:	Drywall - Medium Texture <i>Comment: Material in GOOD condition. No change in material condition.</i>	MISC	Assumed	10	12 sq	No

Functional Space Notes

HAZARD MANAGEMENT SERVICES, INC.

Three Year Reinspection

Client: Central California Conference of 7th Day Adventist **Site:** Peninsula Adventist School

HMS Project Number: M17005U

Date of Inspection: March 1, 2017

Materials		Material Class	Percent Asbestos	Hmgns. Sampled Here?	Footage Sq/Ln/Jnts	Friable? Yes/No
Building: 04 - Chapel Building		Room: 07 - Chapel - 39 x 23 x 8				
Floor:	Carpet and Mastic - Red	MISC	Assumed	11	897 sq	No
	<i>Comment: Material in GOOD condition. No change in material condition.</i>					
Baseboard:	Wood	NON	Non-Suspect			
Walls:	Drywall - Medium Texture	MISC	Assumed	10	992 sq	No
	<i>Comment: Material in GOOD condition. No change in material condition.</i>					
Ceiling:	Drywall - Medium Texture	MISC	Assumed	10	897 sq	No
	<i>Comment: Material in GOOD condition. No change in material condition.</i>					
Building: 04 - Chapel Building		Room: 08 - Exterior Water Heater Closet - 3 x 4 x 8				
Floor:	Concrete	NON	Non-Suspect			
Walls:	Exterior Stucco	MISC	Assumed	12	28 sq	No
	<i>Comment: Material in GOOD condition. No change in material condition.</i>					
Walls:	Wood	NON	Non-Suspect			
Ceiling:	Wood	NON	Non-Suspect			
Building: 04 - Chapel Building		Room: 09 - Attic - 48 x 23 x 4				
Floor:	Fiberglass Batt Insulation	NON	Non-Suspect			
	<i>Comment: Drywall ceiling materials from spaces below visible when pulled up.</i>					
Walls:	Wood	NON	Non-Suspect			
Ceiling:	Wood	NON	Non-Suspect			
<i>Room Access to attic in Space 04 - Storage Room.</i>						
<i>Comments:</i>						

Functional Space Notes

HAZARD MANAGEMENT SERVICES, INC.

Three Year Reinspection

Client: Central California Conference of 7th Day Adventist **Site:** Peninsula Adventist School
HMS Project Number: M17005U **Date of Inspection:** March 1, 2017

Non-Inspected Rooms and Comments:

01 - Classroom Building 1 - 10 - Attic: No attic area in the space. Some walls terminate before reaching the open roof joists of spaces and what pipes are visible are noted in various functional space notes.

01 - Classroom Building 1 - 11 - Basement: Building appears to be constructed on a concrete slab and no basement area was identified.

01 - Classroom Building 1 - 12 - Exterior: Inspection was completed per AHERA requirements and exterior materials were not included.

02 - Classroom Building 2 - 07 - Attic: No attic access located during the inspection that could be accessed.

02 - Classroom Building 2 - 08 - Basement: No basement or crawl space access below the building was located during the inspection.

02 - Classroom Building 2 - 09 - Exterior: Inspection was completed per AHERA requirements and exterior materials were not included.

03 - Office Building - 09 - Exterior: Inspection was completed per AHERA requirements and exteriors were not included.

04 - Chapel Building - 10 - Basement: No crawl space or basement access located. Building appears to be constructed on a concrete foundation.

04 - Chapel Building - 11 - Exterior: Inspection was completed per AHERA requirements and exterior were no included.

Homogeneous Material Records

HAZARD MANAGEMENT SERVICES, INC.

AHERA Three Year Re-Inspection

Client: Central California Conference of 7th Day Adventist **Site:** Peninsula Adventist School

HMS Project Number: M17005U

Date of Inspection: 3/1/2017

Table of Contents

01 - Classroom Building 1	1
02 - Classroom Building 2	4
03 - Office Building	6
04 - Chapel Building	8

Hazard Management Services, Inc.

AHERA Three Year Re-Inspection

District: Central California Conference of 7th Day Adventist
Site: Peninsula Adventist School

Project Number: M17005U
Date of Re-inspection: 3/1/2017

01 - Classroom Building 1
Building Comment:

#	Building Name	Mat'l # Class	Material	Sample Number(s)	Location	Percent Asbestos	Feet	Friable	Condition & Comments
4	01 - Classroom Building 1	2 MISC	Drywall - Smooth Texture	NOT SAMPLED	02 - Resource Room - Walls/Ceiling	Assumed	369 Square	No	Material in GOOD condition. No change in material condition.
4	01 - Classroom Building 1	2 MISC	Drywall - Smooth Texture	NOT SAMPLED	03 - Work Room - Walls	Assumed	420 Square	No	Material in GOOD condition. No change in material condition.
4	01 - Classroom Building 1	2 MISC	Drywall - Smooth Texture	NOT SAMPLED	04 - Girls Restroom Foyer - Walls	Assumed	42 Square	No	Material in GOOD condition. No change in material condition.
4	01 - Classroom Building 1	2 MISC	Drywall - Smooth Texture	NOT SAMPLED	08 - Exterior Furnace Closet - Walls	Assumed	24 Square	No	Material in GOOD condition. No change in material condition.
4	01 - Classroom Building 1	14 MISC	Carpet and Mastic - Grey	NOT SAMPLED	01 - Classroom - Floor	Assumed	630 Square	No	Material in GOOD condition. No change in material condition.
4	01 - Classroom Building 1	20 MISC	18" Ceramic Tile and Grout - White	NOT SAMPLED	07 - Boys Restroom - Floor	Assumed	36 Square	No	Material in GOOD condition. No change in material condition.
4	01 - Classroom Building 1	23 MISC	9" VFT and Mastic - Tan	NOT SAMPLED	01 - Classroom - Floor	Assumed	630 Square	No	Material in GOOD condition. No change in material condition.
4	01 - Classroom Building 1	23 MISC	9" VFT and Mastic - Tan	NOT SAMPLED	04 - Girls Restroom Foyer - Floor	Assumed	12 Square	No	Material in GOOD condition. No change in material condition.
4	01 - Classroom Building 1	23 MISC	9" VFT and Mastic - Tan	NOT SAMPLED	05 - Girls Restroom - Floor	Assumed	36 Square	No	Material in GOOD condition. No change in material condition.
4	01 - Classroom Building 1	23 MISC	9" VFT and Mastic - Tan	NOT SAMPLED	06 - Boys Restroom Foyer - Floor	Assumed	12 Square	No	Material in GOOD condition. No change in material condition.
4	01 - Classroom Building 1	23 MISC	9" VFT and Mastic - Tan	NOT SAMPLED	07 - Boys Restroom - Floor	Assumed	36 Square	No	Material in GOOD condition. No change in material condition.
4	01 - Classroom Building 1	23 MISC	9" VFT and Mastic - Tan	NOT SAMPLED	08 - Exterior Furnace Closet - Floor	Assumed	9 Square	No	Material in GOOD condition. No change in material condition.

Hazard Management Services, Inc.

AHERA Three Year Re-Inspection

District: Central California Conference of 7th Day Adventist
Site: Peninsula Adventist School

Project Number: M17005U
Date of Re-inspection: 3/1/2017

#	Building Name	Mat'l # Class	Material	Sample Number(s)	Location	Percent Asbestos	Feet	Friable	Condition & Comments
4	01 - Classroom Building 1	24 MISC	Carpet and Mastic - Light Green	NOT SAMPLED	02 - Resource Room - Floor	Assumed	105 Square	No	Material in GOOD condition. No change in material condition.
4	01 - Classroom Building 1	25 MISC	2" Baseboard and Mastic - Tan	NOT SAMPLED	02 - Resource Room - Baseboard	Assumed	33 Linear	No	Material in GOOD condition. No change in material condition.
4	01 - Classroom Building 1	26 MISC	Plaster - Stucco Finish	NOT SAMPLED	02 - Resource Room - Walls	Assumed	88 Square	No	Material in GOOD condition. No change in material condition.
4	01 - Classroom Building 1	26 MISC	Plaster - Stucco Finish	NOT SAMPLED	03- Work Room - Walls	Assumed	140 Square	No	Material in GOOD condition. No change in material condition.
4	01 - Classroom Building 1	27 MISC	Carpet and Mastic - Aqua	NOT SAMPLED	04 - Girls Restroom Foyer - Floor	Assumed	12 Square	No	Material in GOOD condition. Material has been REMOVED. Comment: Removed
4	01 - Classroom Building 1	27 MISC	Carpet and Mastic - Aqua	NOT SAMPLED	06 - Boys Restroom Foyer - Floor	Assumed	12 Square	No	Material in GOOD condition. Material has been REMOVED. Comment: Removed
4	01 - Classroom Building 1	28 MISC	Transite Flue Pipe	NOT SAMPLED	04 - Girls Restroom Foyer - Pipes	Assumed	5 Linear	No	Material in GOOD condition. No change in material condition.
4	01 - Classroom Building 1	29 MISC	Linoleum and Mastic - Wood Squares	NOT SAMPLED	05 - Girls Restroom - Floor	Assumed	36 Square	No	Material in GOOD condition. No change in material condition.
4	01 - Classroom Building 1	30 MISC	Plaster - Smooth Finish	NOT SAMPLED	05 - Girls Restroom - Walls/Ceiling	Assumed	228 Square	No	Material in GOOD condition. No change in material condition.
4	01 - Classroom Building 1	30 MISC	Plaster - Smooth Finish	NOT SAMPLED	07 - Boys Restroom - Walls/Ceiling	Assumed	228 Square	No	Material in GOOD condition. No change in material condition.
4	01 - Classroom Building 1	31 MISC	Drywall - Knockdown Texture	NOT SAMPLED	08 - Exterior Furnace Closet - Ceiling	Assumed	9 Square	No	Material in GOOD condition. No change in material condition.
4	01 - Classroom Building 1	32 MISC	Drywall - Bare	NOT SAMPLED	09 - Exterior Water Heater Closet - Walls/Ceiling	Assumed	105 Square	No	Material in GOOD condition. No change in material condition. Material does not include a skim coat or joint compound layer.

Hazard Management Services, Inc.

AHERA Three Year Re-Inspection

District: Central California Conference of 7th Day Adventist
Site: Peninsula Adventist School

Project Number: M17005U
Date of Re-inspection: 3/1/2017

#	Building Name	Mat'l # Class	Material	Sample Number(s)	Location	Percent Asbestos	Feet	Friable	Condition & Comments
4	01 - Classroom Building 1	900 MISC	Carpet and Mastic- Red/Orange	NOT SAMPLED	04 - Girls Restroom Foyer - Floor	Assumed		No	Material in GOOD condition. No change in material condition.
4	01 - Classroom Building 1	900 MISC	Carpet and Mastic- Red/Orange	NOT SAMPLED	06 - Boys Restroom Foyer - Floor	Assumed	12 Square	No	Material in GOOD condition. No change in material condition.
4	01 - Classroom Building 1	0 NON	Concrete	NOT SAMPLED	03- Work Room - Floor	Non-Suspect	147 Square	No	No change in material condition.
4	01 - Classroom Building 1	0 NON	Wood	NOT SAMPLED	Various Locations	Non-Suspect			No change in material condition.

Hazard Management Services, Inc.

AHERA Three Year Re-Inspection

District: Central California Conference of 7th Day Adventist

Site: Peninsula Adventist School

Project Number: M17005U

Date of Re-inspection: 3/1/2017

02 - Classroom Building 2

Building 2

#	Building Name	Mat'l # Class	Material	Sample Number(s)	Location	Percent Asbestos	Feet	Friable	Condition & Comments
3	02 - Classroom Building 2	2 MISC	Drywall - Smooth Texture	NOT SAMPLED	01 - Classroom - Walls/Ceiling	Assumed	2464 Square	No	Material in GOOD condition. No change in material condition.
3	02 - Classroom Building 2	2 MISC	Drywall - Smooth Texture	NOT SAMPLED	03 - Kitchen - Walls/Ceiling	Assumed	628 Square	No	Material in GOOD condition. No change in material condition.
3	02 - Classroom Building 2	2 MISC	Drywall - Smooth Texture	NOT SAMPLED	04 - Custodial Closet - Walls/Ceiling	Assumed	304 Square	No	Material in GOOD condition. No change in material condition.
3	02 - Classroom Building 2	14 MISC	Carpet and Mastic - Grey	NOT SAMPLED	01 - Classroom - Floor	Assumed	1248 Square	No	Material in GOOD condition. No change in material condition.
3	02 - Classroom Building 2	14 MISC	Carpet and Mastic - Grey	NOT SAMPLED	02 - Staff Workroom - Floor	Assumed	150 Square	No	Material in GOOD condition. No change in material condition.
3	02 - Classroom Building 2	15 MISC	Drywall - Rough Texture	NOT SAMPLED	02 - Staff Workroom - Walls	Assumed	600 Square	No	Material in GOOD condition. No change in material condition.
3	02 - Classroom Building 2	16 MISC	Sprayed-On-Ceiling Materials	HMS-F14031U-16A, 16B, 16C	02 - Staff Workroom - Ceiling	None Detected	600 Square	Yes	No change in material condition.
3	02 - Classroom Building 2	17 MISC	Linoleum and Mastic - Squares	NOT SAMPLED	03 - Kitchen - Floor	Assumed	45 Square	No	Material in GOOD condition. No change in material condition.
3	02 - Classroom Building 2	18 MISC	Linoleum and Mastic - Beige Squares	NOT SAMPLED	03 - Kitchen - Floor	Assumed	135 Square	No	Material in GOOD condition. No change in material condition.
3	02 - Classroom Building 2	19 MISC	Linoleum and Mastic - Mauve Crackles	HMS-F14031U-19A	04 - Custodial Closet - Floor	None Detected	48 Square	No	No change in material condition.
3	02 - Classroom Building 2	20 MISC	18" Ceramic Tile and Grout - White	NOT SAMPLED	05 - Girls Restroom - Floor	Assumed	60 Square	No	Material in GOOD condition. No change in material condition.
3	02 - Classroom Building 2	20 MISC	18" Ceramic Tile and Grout - White	NOT SAMPLED	06 - Boys Restroom - Floor	Assumed	42 Square	No	Material in GOOD condition. No change in material condition.

Hazard Management Services, Inc.

AHERA Three Year Re-Inspection

District: Central California Conference of 7th Day Adventist
Site: Peninsula Adventist School

Project Number: M17005U
Date of Re-inspection: 3/1/2017

#	Building Name	Mat'l # Class	Material	Sample Number(s)	Location	Percent Asbestos	Feet	Friable	Condition & Comments
3	02 - Classroom Building 2	21 MISC	6" Baseboard and Mastic - White	NOT SAMPLED	05 - Girls Restroom - Baseboard	Assumed	32 Linear	No	Material in GOOD condition. No change in material condition.
3	02 - Classroom Building 2	21 MISC	6" Baseboard and Mastic - White	NOT SAMPLED	06 - Boys Restroom - Baseboard	Assumed	26 Linear	No	Material in GOOD condition. No change in material condition.
3	02 - Classroom Building 2	22 MISC	Masonite - Beige	NOT SAMPLED	05 - Girls Restroom - Walls/Ceiling	Assumed	316 Square	No	Material in GOOD condition. No change in material condition.
3	02 - Classroom Building 2	22 MISC	Masonite - Beige	NOT SAMPLED	06 - Boys Restroom - Walls/Ceiling	Assumed	250 Square	No	Material in GOOD condition. No change in material condition.
3	02 - Classroom Building 2	0 NON	Wood	NOT SAMPLED	Various Locations	Non-Suspect			No change in material condition.

Hazard Management Services, Inc.

AHERA Three Year Re-Inspection

District: Central California Conference of 7th Day Adventist
 Site: Peninsula Adventist School

Project Number: M17005U
 Date of Re-inspection: 3/1/2017

03 - Office Building Building Comment:

#	Building Name	Mat'l # Class	Material	Sample Number(s)	Location	Percent Asbestos	Feet	Friable	Condition & Comments
1	03 - Office Building	1 MISC	Carpet and Mastic - Brown	NOT SAMPLED	01 - Office - Floor	Assumed	90 Square	No	Material in GOOD condition. No change in material condition.
1	03 - Office Building	1 MISC	Carpet and Mastic - Brown	NOT SAMPLED	04 - Classroom - Floor	Assumed	540 Square	No	Material in GOOD condition. No change in material condition.
1	03 - Office Building	2 MISC	Drywall - Smooth Texture	NOT SAMPLED	01 - Office - Walls/Ceiling	Assumed	432 Square	No	Material in GOOD condition. No change in material condition.
1	03 - Office Building	2 MISC	Drywall - Smooth Texture	NOT SAMPLED	02 - Office 2 - Walls/Ceiling	Assumed	404 Square	No	Material in GOOD condition. No change in material condition.
1	03 - Office Building	2 MISC	Drywall - Smooth Texture	NOT SAMPLED	03 - Restroom - Walls/Ceiling	Assumed	248 Square	No	Material in GOOD condition. No change in material condition.
1	03 - Office Building	2 MISC	Drywall - Smooth Texture	NOT SAMPLED	04 - Classroom - Walls/Ceiling	Assumed	1292 Square	No	Material in GOOD condition. No change in material condition.
1	03 - Office Building	2 MISC	Drywall - Smooth Texture	NOT SAMPLED	05 - Meeting Room - Walls/Ceiling	Assumed	450 Square	No	Material in GOOD condition. No change in material condition.
1	03 - Office Building	2 MISC	Drywall - Smooth Texture	NOT SAMPLED	06 - Meeting Room 2 - Walls/Ceiling	Assumed	450 Square	No	Material in GOOD condition. No change in material condition.
1	03 - Office Building	3 MISC	Carpet and Mastic - Green	NOT SAMPLED	02 - Office 2 - Floor	Assumed	80 Square	No	Material in GOOD condition. No change in material condition.
1	03 - Office Building	4 MISC	12" VFT and Mastic - Tan Squares	NOT SAMPLED	03 - Restroom - Floor	Assumed	40 Square	No	Material in GOOD condition. No change in material condition.
1	03 - Office Building	5 MISC	2" Baseboard and Mastic - Beige	NOT SAMPLED	03 - Restroom - Baseboard	Assumed	26 Linear	No	Material in GOOD condition. No change in material condition.
1	03 - Office Building	6 MISC	FRP - Green Squares	NOT SAMPLED	03 - Restroom - Walls	Assumed	104 Square	No	Material in GOOD condition. No change in material condition.

Hazard Management Services, Inc.

AHRA Three Year Re-Inspection

District: Central California Conference of 7th Day Adventist
Site: Peninsula Adventist School

Project Number: M17005U
Date of Re-inspection: 3/1/2017

#	Building Name	Mat'l # Class	Material	Sample Number(s)	Location	Percent Asbestos	Feet	Friable	Condition & Comments
1	03 - Office Building	7 MISC	Vinyl Floor Tile and Mastic	NOT SAMPLED	01 - Office - Floor	Assumed	90 Square	No	Material in GOOD condition. No change in material condition.
1	03 - Office Building	7 MISC	Vinyl Floor Tile and Mastic	NOT SAMPLED	02 - Office 2 - Floor	Assumed	80 Square	No	Material in GOOD condition. No change in material condition.
1	03 - Office Building	7 MISC	Vinyl Floor Tile and Mastic	NOT SAMPLED	04 - Classroom - Floor	Assumed	540 Square	No	Material in GOOD condition. No change in material condition.
1	03 - Office Building	7 MISC	Vinyl Floor Tile and Mastic	NOT SAMPLED	05 - Meeting Room - Floor	Assumed	150 Square	No	Material in GOOD condition. No change in material condition.
1	03 - Office Building	7 MISC	Vinyl Floor Tile and Mastic	NOT SAMPLED	06 - Meeting Room 2 - Floor	Assumed	150 Square	No	Material in GOOD condition. No change in material condition.
1	03 - Office Building	8 MISC	Carpet and Mastic - Orange	NOT SAMPLED	05 - Meeting Room - Floor	Assumed	150 Square	No	Material in GOOD condition. No change in material condition.
1	03 - Office Building	8 MISC	Carpet and Mastic - Orange	NOT SAMPLED	06 - Meeting Room 2 - Floor	Assumed	150 Square	No	Material in GOOD condition. No change in material condition.
1	03 - Office Building	13 MISC	Moisture Barrier Paper	NOT SAMPLED	08 - Basement - Walls	Assumed	984 Square	No	Material in GOOD condition. No change in material condition.
1	03 - Office Building	28 MISC	Transite Flue Pipe	NOT SAMPLED	07 - Attic - Pipes	Assumed	4 Linear	No	Material in GOOD condition. No change in material condition.
1	03 - Office Building	0 NON	Dirt	NOT SAMPLED	08 - Basement - Floor	Non-Suspect	1240 Square	No	No change in material condition.
1	03 - Office Building	0 NON	Fiberglass Insulation	NOT SAMPLED	08 - Basement - Pipes	Non-Suspect	184 Square	No	No change in material condition.
1	03 - Office Building	0 NON	Metal Partition Wall	NOT SAMPLED	Various Locations	Non-Suspect			No change in material condition.
1	03 - Office Building	0 NON	Wood	NOT SAMPLED	Various Locations	Non-Suspect			No change in material condition.

Hazard Management Services, Inc.

AHERA Three Year Re-Inspection

District: Central California Conference of 7th Day Adventist
Site: Peninsula Adventist School

Project Number: M17005U
Date of Re-inspection: 3/1/2017

04 - Chapel Building Building Comment:

#	Building Name	Mat'l # Class	Material	Sample Number(s)	Location	Percent Asbestos	Feet	Friable	Condition & Comments
2	04 - Chapel Building	9 MISC	12" Ceramic Tile and Grout-White Marble	NOT SAMPLED	01 - Chapel Foyer - Floor	Assumed	54 Square	No	Material in GOOD condition. No change in material condition.
2	04 - Chapel Building	9 MISC	12" Ceramic Tile and Grout-White Marble	NOT SAMPLED	02 - Womens Restroom - Floor	Assumed	56 Square	No	Material in GOOD condition. No change in material condition.
2	04 - Chapel Building	9 MISC	12" Ceramic Tile and Grout-White Marble	NOT SAMPLED	03 - Mens Restroom - Floor	Assumed	32 Square	No	Material in GOOD condition. No change in material condition.
2	04 - Chapel Building	9 MISC	12" Ceramic Tile and Grout-White Marble	NOT SAMPLED	04 - Storage Room - Floor	Assumed	40 Square	No	Material in GOOD condition. No change in material condition.
2	04 - Chapel Building	10 MISC	Drywall - Medium Texture	NOT SAMPLED	01 - Chapel Foyer - Walls/Ceiling	Assumed	234 Square	No	Material in GOOD condition. No change in material condition.
2	04 - Chapel Building	10 MISC	Drywall - Medium Texture	NOT SAMPLED	02 - Womens Restroom - Walls/Ceiling	Assumed	296 Square	No	Material in GOOD condition. No change in material condition.
2	04 - Chapel Building	10 MISC	Drywall - Medium Texture	NOT SAMPLED	03 - Mens Restroom - Walls/Ceiling	Assumed	224 Square	No	Material in GOOD condition. No change in material condition.
2	04 - Chapel Building	10 MISC	Drywall - Medium Texture	NOT SAMPLED	04 - Storage Room - Walls/Ceiling	Assumed	248 Square	No	Material in GOOD condition. No change in material condition.
2	04 - Chapel Building	10 MISC	Drywall - Medium Texture	NOT SAMPLED	05 - Chapel AV Room - Walls/Ceiling	Assumed	124 Square	No	Material in GOOD condition. No change in material condition.
2	04 - Chapel Building	10 MISC	Drywall - Medium Texture	NOT SAMPLED	06 - Chapel Storage Closet - Walls/Ceiling	Assumed	124 Square	No	Material in GOOD condition. No change in material condition.
2	04 - Chapel Building	10 MISC	Drywall - Medium Texture	NOT SAMPLED	07 - Chapel - Walls/Ceiling	Assumed	1889 Square	No	Material in GOOD condition. No change in material condition.
2	04 - Chapel Building	11 MISC	Carpet and Mastic - Red	NOT SAMPLED	05 - Chapel AV Room - Floor	Assumed	12 Square	No	Material in GOOD condition. No change in material condition.

Hazard Management Services, Inc.

AHERA Three Year Re-Inspection

District: Central California Conference of 7th Day Adventist
Site: Peninsula Adventist School

Project Number: M17005U
Date of Re-inspection: 3/1/2017

#	Building Name	Mat'l # Class	Material	Sample Number(s)	Location	Percent Asbestos	Feet	Friable	Condition & Comments
2	04 - Chapel Building	11 MISC	Carpet and Mastic - Red	NOT SAMPLED	06 - Chapel Storage Closet - Floor	Assumed	12 Square	No	Material in GOOD condition. No change in material condition.
2	04 - Chapel Building	11 MISC	Carpet and Mastic - Red	NOT SAMPLED	07 - Chapel - Floor	Assumed	897 Square	No	Material in GOOD condition. No change in material condition.
2	04 - Chapel Building	12 MISC	Exterior Stucco	NOT SAMPLED	08 - Exterior Water Heater Closet - Walls	Assumed	28 Square	No	Material in GOOD condition. No change in material condition.
2	04 - Chapel Building	0 NON	Concrete	NOT SAMPLED	08 - Exterior Water Heater Closet - Floor	Non-Suspect	12 Square	No	No change in material condition.
2	04 - Chapel Building	0 NON	Fiberglass Batt Insulation	NOT SAMPLED	09 - Attic - Floor	Non-Suspect	1104 Square	No	No change in material condition.
2	04 - Chapel Building	0 NON	Wood	NOT SAMPLED	Various Locations	Non-Suspect			No change in material condition.

**ASBESTOS HAZARD EMERGENCY RESPONSE ACT (AHERA)
GENERAL DATA
(FORM A)**

Inspection Date: March 1, 2017

LOCAL EDUCATION AGENCY				COUNTY	
Central California Conference of 7th Day Adventist				Monterey	
SCHOOL NAME				SCHOOL PHONE NUMBER	
Peninsula Adventist School				(831) 394 - 5578	
ADDRESS (Number)		(Street)	(City)	(State)	(Zip)
1025 Mescal Street			Seaside	CA	93955
CDS CODE*	SCHOOL ENROLLMENT*		NO. SCHOOL EMPLOYEES*		NO. BUILDINGS AT SCHOOL
27-66092-6993695	0		0		0

LEA AHERA DESIGNEE

NAME			PHONE NUMBER		
Norma Maynez			(559) 347 - 3121		
ADDRESS (Number)		(Street)	(City)	(State)	(Zip)
2820 Willow Ave			Clovis	CA	93612
TRAINING COURSE(S) AND DATE(S)					
HMS, Inc.					

TOTAL TRAINING HOURS

6


MANAGEMENT PLANNER

NAME			PHONE NUMBER		
Chris Chipponeri			(209) 551 - 2000		
ADDRESS (Number)		(Street)	(City)	(State)	(Zip)
207 McHenry Ave			Modesto	CA	95355-1755
ACCREDITATION NUMBER		TRAINING AGENCY			
MP-R-147-16		Wangerin Environmental			

DOCUMENTS ATTACHED (CHECK APPROPRIATE BOXES)

<input checked="" type="checkbox"/> Record of Friable and Non-Friable ACBM (Form B)	<input type="checkbox"/> Physical and Hazard Assessment of Friable ACBM or Friable Assumed ACBM (Form C)	<input type="checkbox"/> Operations and Maintenance Program	<input type="checkbox"/> Periodic Surveillance Plan
<input type="checkbox"/> Reinspection Plan (Form F)	<input type="checkbox"/> Parent/Employee Notification	<input type="checkbox"/> Resources Needed (Form H)	

We certify that the general Local Education Agency (LEA) responsibilities, as stipulated by 40 CFR Part 763, have been met or will be met and that this Management Plan includes all buildings at this school.

MANAGEMENT PLANNER SIGNATURE	DATE
	5/5/17
LEA DESIGNEE SIGNATURE	DATE
LEA SUPERINTENDENT SIGNATURE	DATE

Date Printed: 5/5/2017

RECORD OF FRIABLE AND NONFRIABLE ACM (FORM B)

Inspection Date: **March 1, 2017**

					CDS CODE	
					27-66092-6993695	
SCHOOL					SCHOOL PHONE NUMBER	
Peninsula Adventist School					(831) 394 - 5578	
ADDRESS	(Number)	(Street)	(City)	(State)	(Zip)	
1025 Mescal Street			Seaside	CA	93955	

- IMPORTANT -

Each building and functional space with friable ACBM or friable assumed ACBM listed on this form requires completion of FORM C (PHYSICAL AND HAZARD ASSESSMENT OF FRIABLE ACBM OR FRIABLE ASSUMED ACBM). Indicate location of material on blueprint, diagram or narrative in square or linear feet, and attach a copy (Sec. 763.93).

LINE	BUILDING NAME & FUNCTIONAL SPACE <i>(Indicate Address if Different From Above)</i>	CHECK ONE			CHECK ONE			
		SUR-FACING	TSI	MISC	ACBM		ASSUMED ACBM	
					FRIABLE	NON-FRIABLE	FRIABLE	NON-FRIABLE
1.	01 - Classroom Building 1 - Drywall - Smooth Texture			X				X
2.	01 - Classroom Building 1 - Carpet and Mastic - Grey			X				X
3.	01 - Classroom Building 1 - 18" Ceramic Tile and Grout - White			X				X
4.	01 - Classroom Building 1 - 9" VFT and Mastic - Tan			X				X
5.	01 - Classroom Building 1 - Carpet and Mastic - Light Green			X				X
6.	01 - Classroom Building 1 - 2" Baseboard and Mastic - Tan			X				X
7.	01 - Classroom Building 1 - Plaster - Stucco Finish			X				X
8.	01 - Classroom Building 1 - Transite Flue Pipe			X				X
9.	01 - Classroom Building 1 - Linoleum and Mastic - Wood Squares			X				X
10.	01 - Classroom Building 1 - Plaster - Smooth Finish			X				X
11.	01 - Classroom Building 1 - Drywall - Knockdown Texture			X				X
12.	01 - Classroom Building 1 - Drywall - Bare			X				X
13.	01 - Classroom Building 1 - Carpet and Mastic-Red/Orange			X				X
14.	02 - Classroom Building 2 - Drywall - Smooth Texture			X				X
15.	02 - Classroom Building 2 - Carpet and Mastic - Grey			X				X
16.	02 - Classroom Building 2 - Drywall - Rough Texture			X				X
17.	02 - Classroom Building 2 - Linoleum and Mastic - Squares			X				X

See attached 'Homogeneous Materials Records' for all materials and their locations by building. On Form B all buildings are listed, and a summary of all non-friable and friable materials is provided. Friable materials and their locations are listed separately under each building on Form B.

Date Printed: 5/5/2017

RECORD OF FRIABLE AND NONFRIABLE ACM (FORM B)

Inspection Date: March 1, 2017

					CDS CODE 27-66092-6993695	
SCHOOL Peninsula Adventist School					SCHOOL PHONE NUMBER (831) 394 - 5578	
ADDRESS	(Number)	(Street)	(City)	(State)	(Zip)	
1025 Mescal Street			Seaside	CA	93955	

- IMPORTANT -

Each building and functional space with friable ACM or friable assumed ACM listed on this form requires completion of FORM C (PHYSICAL AND HAZARD ASSESSMENT OF FRIABLE ACM OR FRIABLE ASSUMED ACM). Indicate location of material on blueprint, diagram or narrative in square or linear feet, and attach a copy (Sec. 763.93).

LINE	BUILDING NAME & FUNCTIONAL SPACE <i>(Indicate Address if Different From Above)</i>	CHECK ONE			CHECK ONE			
		SUR-FACING	TSI	MISC	ACBM		ASSUMED ACMB	
					FRIABLE	NON-FRIABLE	FRIABLE	NON-FRIABLE
18.	02 - Classroom Building 2 - Linoleum and Mastic - Beige Squares			X				X
19.	02 - Classroom Building 2 - 18" Ceramic Tile and Grout - White			X				X
20.	02 - Classroom Building 2 - 6" Baseboard and Mastic - White			X				X
21.	02 - Classroom Building 2 - Masonite - Beige			X				X
22.	03 - Office Building - Carpet and Mastic - Brown			X				X
23.	03 - Office Building - Drywall - Smooth Texture			X				X
24.	03 - Office Building - Carpet and Mastic - Green			X				X
25.	03 - Office Building - 12" VFT and Mastic - Tan Squares			X				X
26.	03 - Office Building - 2" Baseboard and Mastic - Beige			X				X
27.	03 - Office Building - FRP - Green Squares			X				X
28.	03 - Office Building - Vinyl Floor Tile and Mastic			X				X
29.	03 - Office Building - Carpet and Mastic - Orange			X				X
30.	03 - Office Building - Moisture Barrier Paper			X				X
31.	03 - Office Building - Transite Flue Pipe			X				X
32.	04 - Chapel Building - 12" Ceramic Tile and Grout-White Marble			X				X
33.	04 - Chapel Building - Drywall - Medium Texture			X				X
34.	04 - Chapel Building - Carpet and Mastic - Red			X				X
35.	04 - Chapel Building - Exterior Stucco			X				X

See attached 'Homogeneous Materials Records' for all materials and their locations by building. On Form B all buildings are listed, and a summary of all non-friable and friable materials is provided. Friable materials and their locations are listed separately under each building on Form B.

Date Printed: 5/5/2017

HAZARD MANAGEMENT SERVICES, INC.

PHYSICAL AND HAZARD ASSESSMENT OF FRIABLE ACBM OR FRIABLE ASSUMED ACBM (SEC. 763.93) (FORM C)

DISTRICT	Central California Conference of 7th Day Adventist	CDS CODE	27-66092-6993695
SCHOOL	Peninsula Adventist School	SCHOOL PHONE NUMBER	(831) 394 - 5578
ADDRESS	1025 Mescal Street Seaside, CA 93955		
BUILDING NAME		INSPECTION DATE	March 1, 2017
FUNCTIONAL SPACE		LINE NO. FROM FORM B	

TYPE OF FRIABLE ACBM

1. CONDITION OF ACBM (Overall Rating)

2. POTENTIAL FOR DISTURBANCE (Overall Rating)

3. HAZARD ASSESSMENT (Combine Ratings From Items 1 and 2 and Check Appropriate Box)

CONDITION OF ACBM	POTENTIAL FOR DISTURBANCE		
	LOW	MODERATE	HIGH
GOOD	1	2	3
DAMAGED	4	5	6
SIGNIFICANTLY DAMAGED	7	7	7

4. RECOMMENDED RESPONSE ACTION(S) AND COST(S)

RESPONSE ACTION	ESTIMATED COSTS
<input type="checkbox"/> A. OPERATION AND MAINTENANCE	\$
<input type="checkbox"/> B. REPAIR	\$
<input type="checkbox"/> C. ENCAPSULATION	\$
<input type="checkbox"/> D. ENCLOSURE	\$
<input type="checkbox"/> E. REMOVAL	\$
Total Cost \$	

5. NARRATIVE OF RECOMMENDED RESPONSE

(Attach Additional Sheets If Necessary)

SCHEDULE	
START	FINISH

Comments:

NO RESPONSE ACTION NECESSARY.

Material Picture Log

Hazard Management Services, Inc.

Client: Central California Conference of 7th Day Adventist

Site: Peninsula Adventist School



Material: Carpet and Mastic - Brown
HMR #: 1
Asb:
Comment:



Material: Drywall - Smooth Texture
HMR #: 2
Asb:
Comment:



Material: 12" VFT and Mastic - Tan Squares
HMR #: 4
Asb:
Comment:



Material: FRP - Green Squares
HMR #: 6
Asb:
Comment:



Material: Carpet and Mastic - Orange
HMR #: 8
Asb:
Comment:



Material: Drywall - Medium Texture
HMR #: 10
Asb:
Comment:

Material Picture Log

Hazard Management Services, Inc.

Client: Central California Conference of 7th Day Adventist

Site: Peninsula Adventist School



Material: Carpet and Mastic - Red
HMR #: 11
Asb:
Comment:



Material: Exterior Stucco
HMR #: 12
Asb:
Comment:



Material: Carpet and Mastic - Grey
HMR #: 14
Asb:
Comment:



Material: Drywall - Rough Texture
HMR #: 15
Asb:
Comment:



Material: 18" Ceramic Tile and Grout - White
HMR #: 20
Asb:
Comment:



Material: 9" VFT and Mastic - Tan
HMR #: 23
Asb:
Comment:

Material Picture Log

Hazard Management Services, Inc.

Client: Central California Conference of 7th Day Adventist

Site: Peninsula Adventist School



Material: Transite Flue Pipe
HMR #: 28
Asb:
Comment:



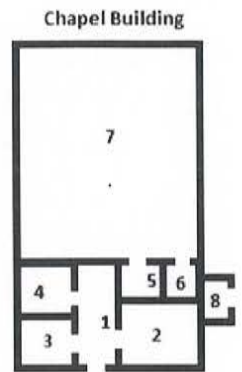
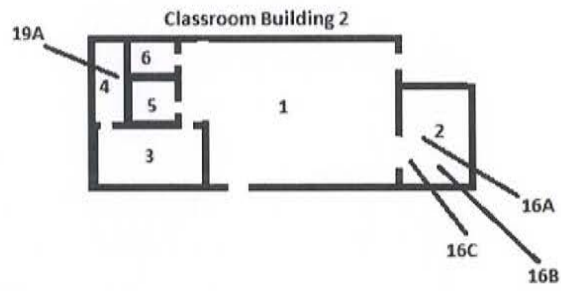
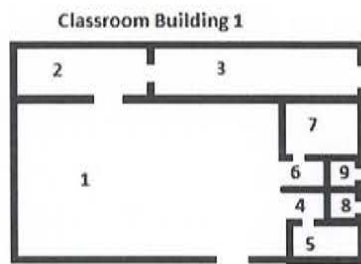
Material: Linoleum and Mastic - Wood Squares
HMR #: 29
Asb:
Comment:



Material: Drywall - Knockdown Texture
HMR #: 31
Asb:
Comment:



Material: Drywall - Bare
HMR #: 32
Asb:
Comment: Material does not include a skim coat or joint compound layer.



Peninsula Adventist School



DEPARTMENT OF INDUSTRIAL RELATIONS

Division of Occupational Safety and Health

Asbestos Unit

2424 Arden Way, Suite 495

Sacramento, CA 95825-2417

(916) 574-2993 Office (916) 483-0572 Fax

<http://www.dir.ca.gov/dirdatabases.html> actu@dir.ca.gov

005174633C

339

Hazard Management Services, Inc.

Christopher J Chipponeri

207 McHenry Ave.

Modesto

CA 95354

March 29, 2017

Dear Certified Asbestos Consultant or Technician:

Enclosed is your certification card. **To maintain your certification, you must abide by the rules printed on the back of the certification card.**

Your certification is valid for a period of one year. If you wish to renew your certification, you must apply for renewal at least 60 days before the expiration date shown on your card. [8 CCR 341.15(h)(1)].

Please hold and do not send copies of your required AHERA refresher renewal certificates to our office until you apply for renewal of your certification.

Certificates must be kept current if you are actively working as a CAC or CSST. The grace period is only for those who are not actively working as an asbestos consultant or site surveillance technician.

Please contact our office at the above address, fax number or email; of any changes in your contact/mailling information within 15 days of the change.

Sincerely,

Jeff Ferrell
Senior Safety Engineer

Attachment: Certification Card

cc: File

Renewal - Card Attached (Revised 10/24/2012)

State of California
Division of Occupational Safety and Health
Certified Asbestos Consultant

Christopher J Chipponeri

Name

Certification No. 10-4633

Expires on 06/16/18

This certification was issued by the Division of Occupational Safety and Health as authorized by Sections 7180 et seq. of the Business and Professions Code.



Wangerin Environmental

This is to confirm that

Chris Chipponeri

has attended the four-hour

AHERA Refresher Course for Asbestos Inspectors

and has completed the requisite training for asbestos accreditation under TSCA Title II.

September 23, 2016

Certificate number: BI-R-391-16

Valid until: September 23, 2017

Cal/OSHA approval number: CA-098-06

Tom Wangerin
Tom Wangerin, MS, CAC
AHERA Training Director
Wangerin Environmental
1936 Helen Road
Pleasant Hill, CA 94523
Phone: 925-825-1066

Wangerin Environmental

This is to confirm that

Chris Chipponeri

has attended the four-hour


*AHERA Refresher Course for Asbestos Management Planners
and has completed the requisite training for asbestos accreditation under TSCA Title II.*

September 23, 2016

Certificate number: MP-R-147-16

Valid until: September 23, 2017

Cal/OSHA approval number: CA-098-08


Tom Wangerin, MS, CAC
AHERA Training Director
Wangerin Environmental
1936 Helen Road
Pleasant Hill, CA 94523
Phone: 925-825-1066

DEPARTMENT OF INDUSTRIAL RELATIONS

Division of Occupational Safety and Health

Asbestos Unit

2424 Arden Way, Suite 495

Sacramento, CA 95825-2417

(916) 574-2993 Office (916) 483-0572 Fax

<http://www.dir.ca.gov/dirdatabases.html> actu@dir.ca.gov

607135728T

413

Hazard Management Services, Inc.

Tyler J Faison

207 McHenry Ave.

Modesto

CA 95354

October 10, 2016

Dear Certified Asbestos Consultant or Technician:

Enclosed is your certification card. **To maintain your certification, you must abide by the rules printed on the back of the certification card.**

Your certification is valid for a period of one year. If you wish to renew your certification, you must apply for renewal at least 60 days before the expiration date shown on your card. [8 CCR 341.15(h)(1)].

Please hold and do not send copies of your required AHERA refresher renewal certificates to our office until you apply for renewal of your certification.

Certificates must be kept current if you are actively working as a CAC or CSST. The grace period is only for those who are not actively working as an asbestos consultant or site surveillance technician.

Please contact our office at the above address, fax number or email; of any changes in your contact/mailling information within 15 days of the change.

Sincerely,

Jeff Ferrell

Senior Safety Engineer

Attachment: Certification Card

cc: File

Renewal - Card Attached (Revised 10/24/2012)

State of California
Division of Occupational Safety and Health
Certified Site Surveillance Technician

Tyler J Faison

Name

Certification No. **16-5728**Expires on **08/17/17**

This certification was issued by the Division of Occupational Safety and Health as authorized by Sections 7180 et seq. of the Business and Professions Code.

Wangerin Environmental

This is to confirm that

Tyler Faison

has attended the four-hour

AHERA Refresher Course for Asbestos Inspectors

and has completed the requisite training for asbestos accreditation under TSCA Title II.

September 23, 2016

Certificate number: BI-R-401-16

Valid until: September 23, 2017

Cal/OSHA approval number: CA-098-06

Tom Wangerin
Tom Wangerin, MS, CAC
AHERA Training Director
Wangerin Environmental
1936 Helen Road
Pleasant Hill, CA 94523
Phone: 925-825-1066