



# Hazard Management Services, Inc.

---

207 McHenry Ave. • Modesto, CA 95354  
(209) 551-2000 • [www.hazmanage.com](http://www.hazmanage.com)

## **Central California Conference of Seventh-Day Adventists**

**West Valley S.D.A. Elementary School**

**US EPA AHERA Re-Inspection Report  
February 2017**

# ***HAZARD MANAGEMENT SERVICES, INC.***

**Central California Conference of 7th**

**West Valley S.D.A Elementary**

**February 13, 2017**

This report is broken into four main sections:

1. This Cover Letter, which is a brief summary of the suspect materials found during the inspection.
2. A Functional Space Notes (FSN) report, which is a room by room breakdown of all materials found during the inspection. The FSN is the report that is most useful for creating demolition or renovation specifications, or for notifying contractors who are working on site.
3. A Homogeneous Material Record (HMR), which is a material by material breakdown of all materials found during the inspection that are suspected to contain asbestos. This HMR satisfies the EPA's AHERA regulations for listing asbestos-containing materials. It can, also, be useful when planning renovation/demolition projects, especially those that will have all asbestos-containing materials removed.
4. The Form C Assessments are case by case assessments. This includes required response action options for all friable asbestos containing materials, all friable assumed (to contain asbestos) materials, and all Thermal System Insulation (TSI) found during the inspection. These assessments have response action dates that have been left blank. The Designated Person for your Local Education Agency (LEA) should place dates into these forms that are reasonable for the district to meet.

Also, included in this report, you will find HMS, Inc.'s Special Notes page concerning possible problems with drywall sampling and renovation/demolition projects, and a list of commonly used abbreviations that are found throughout the reports noted above.

# **HAZARD MANAGEMENT SERVICES, INC.**

**Central California Conference of 7th**

**West Valley S.D.A Elementary**

**February 13, 2017**

At this site, West Valley S.D.A Elementary, all non-friable materials listed below were inspected and were found to be in good condition. These materials will remain non-friable as long as they are not sanded, drilled, cut or otherwise abused so that a powder is produced. Removal of these materials will require an asbestos abatement contractor, in most cases.

12" ACT and Glue - Multi — MISC — Assumed  
Random Holes

12" VFT and Mastic - — MISC — Assumed  
Yellow/Tan Pattern

2" Baseboard and Mastic - — MISC — Assumed  
Brown

4" Baseboard and Mastic - — MISC — Assumed  
Blue

4" Baseboard and Mastic - — MISC — Assumed  
Green

6" Baseboard and Mastic - — MISC — Assumed  
Blue

6" Baseboard and Mastic - — MISC — Assumed  
Yellow/Tan

9" VFT and Mastic - Brown — MISC — Assumed  
/ Green

9" VFT and Mastic - Tan — MISC — Assumed  
with Speck

Carpet and Mastic - Blue — MISC — Assumed

Carpet and Mastic - Blue — MISC — Assumed  
Multi

Carpet and Mastic - Brown — MISC — Assumed  
Multi

Carpet and Mastic - Red — MISC — Assumed

Ceramic Tile - 4" Grey — MISC — Assumed  
w/Grout

Ceramic Tile - Light Yellow — MISC — Assumed  
w/Grout

Drywall - Bare — MISC — Assumed

Drywall - Light Knockdown — MISC — Assumed  
Texture

12" VFT and Mastic - Grey — MISC — Assumed  
Oatmeal

2' x 2' ACTs — MISC — Assumed

4" Baseboard and Glue - — MISC — Assumed  
Off-White

4" Baseboard and Mastic - — MISC — Assumed  
Brown

4" Baseboard and Mastic - — MISC — Assumed  
White

6" Baseboard and Mastic - — MISC — Assumed  
Tan

9" VFT and Mastic - Beige — MISC — Assumed  
w/Speck

9" VFT and Mastic - Dark — MISC — Assumed  
Brown

ACT and Mastic - 12" — MISC — Assumed  
Random Hole

Carpet and Mastic - Blue — MISC — Assumed

Carpet and Mastic - Brown — MISC — Assumed  
/ Blue

Carpet and Mastic - Green — MISC — Assumed

Carpet and Mastic - Tan — MISC — Assumed

Ceramic Tile - 6" White — MISC — Assumed  
w/Speck-Grout

CMU and Mortar — MISC — Assumed

Drywall - Large Knockdown — MISC — Assumed  
Texture

Drywall - Medium Texture — MISC — Assumed

# **HAZARD MANAGEMENT SERVICES, INC.**

**Central California Conference of 7th**

**West Valley S.D.A Elementary**

**February 13, 2017**

Drywall - Sand Texture	— MISC — Assumed	Drywall - Smooth Texture	— MISC — Assumed
Drywall - Smooth Texture Annex	— MISC — Assumed	Drywall - Stipple Finish	— MISC — Assumed
Foil Tape	— MISC — Assumed	FRP and Glue - Painted	— MISC — Assumed
FRP and Mastic - White	— MISC — Assumed	FRP and Mastic -White w/Scratch Pattern	— MISC — Assumed
Linoleum and Mastic - Grey Pebble	— MISC — Assumed	Linoleum and Mastic - Tan Squares	— MISC — Assumed
Silver Duct Tape	— MISC — Assumed	Stucco	— MISC — Assumed

The following non-friable thermal system insulation (TSI) materials were found at this site. Even though these materials are technically friable by definition, they may be treated as non-friable materials as long as they remain in an intact condition. A Form C and an evaluation sheet are included for these materials.

NONE

The following friable asbestos-containing materials were noted at this site. Friable materials are those that can release asbestos fibers with a minimum of contact or disturbance. Friable asbestos-containing materials can only be handled by an asbestos abatement contractor. Evaluation sheets and Form Cs are provided for the materials listed.

9" VFT and Mastic - Tan with Speck	— MISC — Assumed	01 - Main Building	— 17 - HVAC Closet A5
Drywall - Medium Texture	— MISC — Assumed	01 - Main Building	— 17 - HVAC Closet A5
Drywall - Medium Texture	— MISC — Assumed	01 - Main Building	— 17 - HVAC Closet A5
HVAC Duct Tape	— MISC — Assumed	01 - Main Building	— 17 - HVAC Closet A5

See "Special Notes" section concerning drywall sampling and renovations/demolitions. This page contains valuable information which must be considered before any alterations, modernization, renovations or demolitions occur.

Following the "Special Notes" and "Abbreviations" pages you will find the "Homogeneous Materials Record (HMR)". The HMR lists each suspect material (asbestos-containing or not), sample numbers, the location of the material in each building, the percent asbestos of each suspect material, the approximate square footage of each material in these locations and the friability of the material. When you use the HMR sheets you can pick a material and then go through the list and note every location where that material is located.

# ***HAZARD MANAGEMENT SERVICES, INC.***

**Central California Conference of 7th**

**West Valley S.D.A Elementary**

**February 13, 2017**

All materials not identified in this report that are discovered at the site must be assumed to contain asbestos until sampled and proven otherwise. Although there may be materials that have been excluded from the AHERA Management Plan by a letter stating it is non-asbestos-containing, the EPA's "National Emission Standards for Hazardous Air Pollutants (NESHAP)" does not allow for materials to be considered non-asbestos through the use of written documentation. This makes it necessary to bulk sample materials to prove they are non-asbestos-containing prior to renovations, demolitions and modernizations, no matter when they were installed.

**Be sure to add this report to your management plan at the facilities office.**

**Date Printed: 2/27/2017**

# **HAZARD MANAGEMENT SERVICES, INC.**

## **Special Note**

### **SPECIAL NOTE NO. 1 - DRYWALL/SHEETROCK**

Drywall and its components continue to present problems both for our clients and for us. The inconsistency of sample results indicates that even the EPA/AHERA method for sampling drywall is inadequate. Although three to fifteen or more drywall samples may have been collected at your site(s), the results may not be representative of what is present. Asbestos sometimes is found in the drywall itself, in its tape and/or joint compound or in the final texture coat applied to finish the appearance. It can be found in any combination in these materials. It can also be found in patching materials used to repair damaged drywall. Paint added to otherwise non-homogeneous materials can also produce inappropriate assumptions that all materials are the same.

To account for the variability in drywall construction we strongly advise that any substantial renovation project involving drywall be preceded by a comprehensive evaluation of the materials designated for handling.

### **SPECIAL NOTE NO. 2 - RENOVATIONS/DEMOLITIONS**

Please be aware that many possible asbestos-containing materials were specifically exempted from inspection and identification by the AHERA sampling protocol. These exempted materials included roofing materials, most exterior plasters, exterior window putty, exterior transite panels and shingles, some exterior thermal system insulation and a few other materials. AHERA also exempted heat resistant counter tops and transite blackboards and a few other materials found inside of buildings.

While these materials are exempted by AHERA, they are not exempted by Cal/OSHA or EPA's regulation in its "National Emission Standards for Hazardous Air Pollutants" (NESHAP). Therefore, any renovation activity involving these materials must be preceded by a sampling project to identify asbestos-containing materials which may be regulated by these agencies or the local Air Pollution Control District. You cannot rely on your AHERA reports to identify all of these additional materials.

### **SPECIAL NOTE NO. 3 - NEW MATERIALS AND BUILDINGS**

Materials installed since the previous inspection must be certified, in writing, as non-asbestos containing materials, sampled to test for asbestos content, or assumed to contain asbestos. This certification must be from the product manufacturer or the construction engineer on the project during which the new materials were installed. This certification must be placed in your management plan.

Buildings installed (portables) or constructed since October 12, 1988 must be certified to be asbestos-containing building material (ACBMs) free by the manufacturer (portables), architect or construction engineer, or they must be inspected for ACBMs. This certification must be placed in the management plan for the site at which the new building was installed or constructed.

New sites, built after October 12, 1988, require a Management Plan. If ACBM free certification letters are obtainable for all buildings at the new site, no inspection is required, although a Management Plan must still be written.

### **SPECIAL NOTE NO. 4 - Materials Containing Trace Amounts of Asbestos**

Materials containing trace amounts of asbestos are not covered by the AHERA regulations as the EPA does not consider them to be asbestos-containing materials. However, Cal/OSHA does consider materials containing trace amounts of asbestos (down to 0.1%) to be asbestos-containing, and any level of asbestos in a material must be considered a potential exposure hazard.

Materials listed as containing trace amounts of asbestos require special handling procedures - per Cal/OSHA and training for the employees working with these materials. Waste materials containing less than 1% asbestos must be "point counted" or handled as a hazardous waste.

**Date Printed: 2/27/2017**

# **HAZARD MANAGEMENT SERVICES, INC.**

## **Abbreviations**

The following list includes most of the abbreviations you may find within this report.

<b><u>ACT:</u></b>	<b>Acoustic Ceiling/Wall Tile</b>
<b><u>B-I-I:</u></b>	<b>Blown-In-Insulation</b>
<b><u>BLR:</u></b>	<b>Boiler</b>
<b><u>C'Ing</u></b>	<b>Ceiling</b>
<b><u>Carp:</u></b>	<b>Carpet</b>
<b><u>Carp&amp;Mast</u></b>	<b>Carpet and Mastic</b>
<b><u>Bsbrd&amp;Glue</u></b>	<b>Baseboard and Glue</b>
<b><u>DIP:</u></b>	<b>Drop In Panel</b>
<b><u>DIT:</u></b>	<b>Drop In Tile</b>
<b><u>FCP:</u></b>	<b>False Ceiling Panel</b>
<b><u>FRP:</u></b>	<b>Fiberglass Reinforced Plastic</b>
<b><u>FG:</u></b>	<b>Fiberglass</b>
<b><u>HMR #:</u></b>	<b>Homogeneous Material Number</b>
<b><u>HTR:</u></b>	<b>Heater</b>
<b><u>LINO:</u></b>	<b>Linoleum</b>
<b><u>MISC</u></b>	<b>Miscellaneous</b>
<b><u>PW:</u></b>	<b>Pipe Wrap</b>
<b><u>S-O-C:</u></b>	<b>Sprayed-On Ceiling</b>
<b><u>SOFP:</u></b>	<b>Sprayed on Fire Proofing</b>
<b><u>S-O-W:</u></b>	<b>Sprayed-On Wall</b>
<b><u>SURF:</u></b>	<b>Surfacing</b>
<b><u>T-O-C:</u></b>	<b>Troweled-On Ceiling</b>
<b><u>T-O-W:</u></b>	<b>Troweled-On Wall</b>
<b><u>TSI:</u></b>	<b>Thermal System Insulation</b>
<b><u>VFT:</u></b>	<b>Vinyl Floor Tile</b>
<b><u>W &amp; C:</u></b>	<b>Walls and Ceilings</b>



***Functional Space Notes***  
**HAZARD MANAGEMENT SERVICES, INC.**  
Three Year Reinspection

**Client:** Central California Conference of 7th Day Adventist    **Site:** West Valley S.D.A Elementary  
**HMS Project Number:** M17005K    **Date of Inspection:** February 13, 2017

---

**Table of Contents**

01 - Main Building .....	1
02 - Annex Classroom Building A .....	13
03 - Annex Classroom Building B .....	15



# Functional Space Notes

## HAZARD MANAGEMENT SERVICES, INC.

### Three Year Reinspection

Client: Central California Conference of 7th Day Adventist

Site: West Valley S.D.A Elementary

HMS Project Number: M17005K

Date of Inspection: February 13, 2017

Materials	Material Class	Percent Asbestos	Hmgns. Matrl #	Sampled Here?	Footage Sq/Ln/Jnts	Friable? Yes/No
<b>Building:</b> 01 - Main Building		<b>Room:</b> 01 - First Floor Hallway - 78 x 6 x 8				
<b>Floor:</b>	9" VFT and Mastic - Tan with Speck	MISC	Assumed	1	468 sq	No
	<i>Comment: Material is DAMAGED.</i> <i>Comment: Material is chipped and broken at thresholds leading into space from exterior entry/exit points. This material is damaged at the thresholds of exterior entry / exit doors. The tiles are still non-friable, but should be replaced with non-asbestos vinyl floor tiles.</i>					
<b>Baseboard:</b>	2" Baseboard and Mastic - Brown	MISC	Assumed	2	168 ln	No
	<i>Comment: Material in GOOD condition.</i> <i>No change in material condition.</i>					
<b>Walls:</b>	Drywall - Medium Texture	MISC	Assumed	3	1344 sq	No
	<i>Comment: Material in GOOD condition.</i> <i>No change in material condition.</i>					
<b>Ceiling:</b>	ACT and Mastic - 12" Random Hole	MISC	Assumed	4	468 sq	No
	<i>Comment: Material is DAMAGED.</i> <i>Comment: Material has several spots of impact from what appears to be a hammer face or possibly end of a mop handle.</i> <i>These tiles are physically damaged, but not in a friable condition.</i>					
<b>Ceiling:</b>	Drywall - Medium Texture	MISC	Assumed	3	468 sq	No
	<i>Comment: Material in GOOD condition.</i> <i>No change in material condition.</i> <i>Above the ACTs in the space.</i>					
<b>Room Comments:</b>	L shaped through lower floor of building					
<b>Building:</b> 01 - Main Building		<b>Room:</b> 02 - Main Office - 24 x 18 x 8				
<b>Floor:</b>	9" VFT and Mastic - Tan with Speck	MISC	Assumed	1	432 sq	No
	<i>Comment: Material in GOOD condition.</i> <i>No change in material condition.</i> <i>Material is below the carpet of the space.</i>					
<b>Floor:</b>	Carpet and Mastic - Brown Multi	MISC	Assumed	22	432 sq	No
	<i>Comment: Material in GOOD condition.</i> <i>No change in material condition.</i>					
<b>Baseboard:</b>	Wood 2"	NON	Non-Suspect			
<b>Walls:</b>	Drywall - Medium Texture	MISC	Assumed	3	672 sq	No
	<i>Comment: Material in GOOD condition.</i> <i>No change in material condition.</i>					
<b>Ceiling:</b>	Drywall - Medium Texture	MISC	Assumed	3	432 sq	No
	<i>Comment: Material in GOOD condition.</i> <i>No change in material condition.</i>					
<b>Removed Materials:</b>						
<b>Floor:</b>	Carpet and Mastic - Green	MISC	Assumed	21	432 sq	No
	<i>Comment: Material has been REMOVED.</i> <i>Material was not likely replaced - changed within inspection to better describe color of the carpet surface.</i>					

# Functional Space Notes

## HAZARD MANAGEMENT SERVICES, INC.

### Three Year Reinspection

Client: Central California Conference of 7th Day Adventist      Site: West Valley S.D.A Elementary

HMS Project Number: M17005K

Date of Inspection: February 13, 2017

Materials	Material Class	Percent Asbestos	Hmgns. Matri #	Sampled Here?	Footage Sq/Ln/Jnts	Friable? Yes/No
<b>Building:</b> 01 - Main Building		<b>Room:</b> 03 - Principal's Office - 20 x 12 x 8				
<b>Floor:</b> 9" VFT and Mastic - Tan with Speck <i>Comment: Material in GOOD condition. No change in material condition. Below the carpet in the space.</i>	MISC	Assumed	1		240 sq	No
<b>Floor:</b> Carpet and Mastic - Brown Multi <i>Comment: Material in GOOD condition. No change in material condition.</i>	MISC	Assumed	22		240 sq	No
<b>Baseboard:</b> Wood 2"	NON	Non-Suspect				
<b>Walls:</b> Drywall - Medium Texture <i>Comment: Material in GOOD condition. No change in material condition.</i>	MISC	Assumed	3		512 sq	No
<b>Ceiling:</b> Drywall - Medium Texture <i>Comment: Material in GOOD condition. No change in material condition.</i>	MISC	Assumed	3		240 sq	No
<b>Removed Materials:</b>						
<b>Floor:</b> Carpet and Mastic - Green <i>Comment: Material has been REMOVED. Comment: Unknown if material was misidentified during previous inspection. New material provided to better describe the material present.</i>	MISC	Assumed	21		240 sq	No
<b>Building:</b> 01 - Main Building		<b>Room:</b> 04 - Small Office - 9 x 9 x 8				
<b>Floor:</b> 9" VFT and Mastic - Tan with Speck <i>Comment: Material in GOOD condition. No change in material condition. Material is below the carpet of the space.</i>	MISC	Assumed	1		81 sq	No
<b>Floor:</b> Carpet and Mastic - Brown Multi <i>Comment: Material in GOOD condition. No change in material condition.</i>	MISC	Assumed	22		81 sq	No
<b>Baseboard:</b> 4" Baseboard and Mastic - White <i>Comment: Material in GOOD condition. No change in material condition.</i>	MISC	Assumed	25		36 ln	No
<b>Walls:</b> Drywall - Medium Texture <i>Comment: Material in GOOD condition. No change in material condition.</i>	MISC	Assumed	3		288 sq	No
<b>Ceiling:</b> Drywall - Medium Texture <i>Comment: Material in GOOD condition. No change in material condition.</i>	MISC	Assumed	3		81 sq	No
<b>Removed Materials:</b>						
<b>Floor:</b> Carpet and Mastic - Blue <i>Comment: Material has been REMOVED. Comment: Material may have been misidentified during previous inspection or may have been replaced.</i>	MISC	Assumed	16		81 sq	No
<b>Baseboard:</b> None <i>Comment: Material has been REMOVED.</i>	NON	Non-Suspect				



# Functional Space Notes

## HAZARD MANAGEMENT SERVICES, INC.

### Three Year Reinspection

Client: Central California Conference of 7th Day Adventist      Site: West Valley S.D.A Elementary

HMS Project Number: M17005K

Date of Inspection: February 13, 2017

Materials	Material Class	Percent Asbestos	Hmgns. Sampled Matrl # Here?	Footage Sq/Ln/Jnts	Friable? Yes/No
<b>Building:</b> 01 - Main Building		<b>Room:</b> 05 - Grades 3 & 4 - 36 x 30 x 10			
<b>Floor:</b> 9" VFT and Mastic - Tan with Speck <i>Comment: Material in GOOD condition. No change in material condition. The tiles appear to have been removed, but the black mastic associated remains below the carpet.</i>	MISC	Assumed	1	1080 sq	No
<b>Floor:</b> Carpet and Mastic - Blue Multi <i>Comment: Material in GOOD condition. No change in material condition.</i>	MISC	Assumed	5	1080 sq	No
<b>Baseboard:</b> 4" Baseboard and Mastic - Blue <i>Comment: Material in GOOD condition. No change in material condition.</i>	MISC	Assumed	23	132 ln	No
<b>Walls:</b> Drywall - Medium Texture <i>Comment: Material in GOOD condition. No change in material condition.</i>	MISC	Assumed	3	1320 sq	No
<b>Ceiling:</b> ACT and Mastic - 12" Random Hole <i>Comment: Material in GOOD condition. No change in material condition.</i>	MISC	Assumed	4	1080 sq	No
<b>Ceiling:</b> Drywall - Medium Texture <i>Comment: Material in GOOD condition. No change in material condition. Above the ACTs in the space.</i>	MISC	Assumed	3	1080 sq	No
<b>Counter Top:</b> Ceramic Tile - 4" Grey w/Grout <i>Comment: Material in GOOD condition. No change in material condition. Includes the backsplash on the walls.</i>	MISC	Assumed	6	72 sq	No
<b>Removed Materials:</b>					
<b>Baseboard:</b> Wood 2" <i>Comment: Material has been REMOVED.</i>	NON	Non-Suspect			

# **Functional Space Notes**

## **HAZARD MANAGEMENT SERVICES, INC.**

### **Three Year Reinspection**

**Client:** Central California Conference of 7th Day Adventist     **Site:** West Valley S.D.A Elementary  
**HMS Project Number:** M17005K     **Date of Inspection:** February 13, 2017

Materials	Material Class	Percent Asbestos	Hmgns. Matrl #	Sampled Here?	Footage Sq/Ln/Jnts	Friable? Yes/No
<b>Building:</b> 01 - Main Building		<b>Room:</b> 06 - Grades 1 & 2 - 36 x 36 x 10				
<b>Floor:</b> 9" VFT and Mastic - Tan with Speck <i>Comment: Material in GOOD condition. No change in material condition. Material is below the carpet of the space.</i>	MISC	Assumed	1		1296 sq	No
<b>Floor:</b> Carpet and Mastic - Blue Multi <i>Comment: Material in GOOD condition. No change in material condition.</i>	MISC	Assumed	5		1296 sq	No
<b>Baseboard:</b> 4" Baseboard and Mastic - Blue <i>Comment: Material in GOOD condition. No change in material condition.</i>	MISC	Assumed	23		144 ln	No
<b>Walls:</b> Drywall - Medium Texture <i>Comment: Material in GOOD condition. No change in material condition.</i>	MISC	Assumed	3		1440 sq	No
<b>Ceiling:</b> ACT and Mastic - 12" Random Hole <i>Comment: Material in GOOD condition. No change in material condition.</i>	MISC	Assumed	4		1296 sq	No
<b>Ceiling:</b> Drywall - Medium Texture <i>Comment: Material in GOOD condition. No change in material condition. Above the ACTs of the space.</i>	MISC	Assumed	3		1296 sq	No
<b>Removed Materials:</b>						
<b>Baseboard:</b> Wood 2" <i>Comment: Material has been REMOVED. Appears to be nailed on to wall</i>	NON	Non-Suspect				
<b>Building:</b> 01 - Main Building		<b>Room:</b> 07 - Teacher's Workroom - 24 x 11 x 8				
<b>Floor:</b> 9" VFT and Mastic - Tan with Speck <i>Comment: Material in GOOD condition. No change in material condition.</i>	MISC	Assumed	1		50 sq	No
<b>Baseboard:</b> 2" Baseboard and Mastic - Brown <i>Comment: Material in GOOD condition. No change in material condition.</i>	MISC	Assumed	2		70 ln	No
<b>Walls:</b> Drywall - Medium Texture <i>Comment: Material in GOOD condition. No change in material condition.</i>	MISC	Assumed	3		560 sq	No
<b>Ceiling:</b> ACT and Mastic - 12" Random Hole <i>Comment: Material in GOOD condition. No change in material condition.</i>	MISC	Assumed	4		25 sq	No
<b>Ceiling:</b> Drywall - Medium Texture <i>Comment: Material in GOOD condition. No change in material condition. Above the ACTs in the space.</i>	MISC	Assumed	3		264 sq	No
<b>Counter Top:</b> Ceramic Tile - 4" Grey w/Grout <i>Comment: Material in GOOD condition. No change in material condition. Amount includes the tiles at the backsplash of the counter.</i>	MISC	Assumed	6		70 sq	No



# Functional Space Notes

## HAZARD MANAGEMENT SERVICES, INC.

### Three Year Reinspection

Client: Central California Conference of 7th Day Adventist      Site: West Valley S.D.A Elementary

HMS Project Number: M17005K

Date of Inspection: February 13, 2017

Materials	Material Class	Percent Asbestos	Hmgns. Matrl #	Sampled Here?	Footage Sq/Ln/Jnts	Friable? Yes/No
<b>Building: 01 - Main Building</b>						
<b>Room: 08 - Custodial Closet - 7 x 6 x 9</b>						
<b>Floor:</b> Concrete	NON	Non-Suspect				
<b>Walls:</b> Drywall - Medium Texture	MISC	Assumed	3		234 sq	No
<i>Comment: Material in GOOD condition. No change in material condition.</i>						
<b>Ceiling:</b> Drywall - Medium Texture	MISC	Assumed	3		42 sq	No
<i>Comment: Material in GOOD condition. No change in material condition.</i>						
<b>Removed Materials:</b>						
<b>Baseboard:</b> None	NON	Non-Suspect				
<i>Comment: Material has been REMOVED.</i>						
<i>Room Located in Hallway near Space 09 - Women's Restroom</i>						
<i>Comments:</i>						
<b>Building: 01 - Main Building</b>						
<b>Room: 09 - Womens Restroom Foyer - 3 x 5 x 9</b>						
<b>Floor:</b> Linoleum and Mastic - Tan Squares	MISC	Assumed	7		15 sq	No
<i>Comment: Material in GOOD condition. No change in material condition.</i>						
<b>Baseboard:</b> 6" Baseboard and Mastic - Tan	MISC	Assumed	8		16 ln	No
<i>Comment: Material in GOOD condition. No change in material condition.</i>						
<b>Walls:</b> Drywall - Medium Texture	MISC	Assumed	3		144 sq	No
<i>Comment: Material in GOOD condition. No change in material condition.</i>						
<b>Ceiling:</b> Drywall - Medium Texture	MISC	Assumed	3		16 sq	No
<i>Comment: Material in GOOD condition. No change in material condition.</i>						
<i>Room Attic access within this space.</i>						
<i>Comments:</i>						
<b>Building: 01 - Main Building</b>						
<b>Room: 10 - Womens Restroom - 15 x 12 x 9</b>						
<b>Floor:</b> Linoleum and Mastic - Tan Squares	MISC	Assumed	7		180 sq	No
<i>Comment: Material in GOOD condition. No change in material condition.</i>						
<b>Baseboard:</b> 6" Baseboard and Mastic - Tan	MISC	Assumed	8		54 ln	No
<i>Comment: Material in GOOD condition. No change in material condition.</i>						
<b>Walls:</b> Drywall - Smooth Texture	MISC	Assumed	9		486 sq	No
<i>Comment: Material in GOOD condition. No change in material condition. Mirror within the space appears to be mechanically fastened to the wall.</i>						
<b>Walls:</b> FRP and Mastic -White w/Scratch Pattern	MISC	Assumed	10		122 sq	No
<i>Comment: Material in GOOD condition. No change in material condition.</i>						
<b>Ceiling:</b> Drywall - Smooth Texture	MISC	Assumed	9		180 sq	No
<i>Comment: Material in GOOD condition. No change in material condition.</i>						

# **Functional Space Notes**

## **HAZARD MANAGEMENT SERVICES, INC.**

### **Three Year Reinspection**

**Client:** Central California Conference of 7th Day Adventist

**Site:** West Valley S.D.A Elementary

**HMS Project Number:** M17005K

**Date of Inspection:** February 13, 2017

Materials	Material Class	Percent Asbestos	Hmgns. Matri #	Sampled Here?	Footage Sq/Ln/Jnts	Friable? Yes/No
<b>Building:</b> 01 - Main Building		<b>Room:</b> 11 - Mens Restroom Foyer - 4 x 6 x 9				
<b>Floor:</b> Linoleum and Mastic - Tan Squares <i>Comment: Material in GOOD condition. No change in material condition.</i>	MISC	Assumed	7		24 sq	No
<b>Baseboard:</b> 6" Baseboard and Mastic - Tan <i>Comment: Material in GOOD condition. No change in material condition.</i>	MISC	Assumed	8		20 ln	No
<b>Walls:</b> Drywall - Medium Texture <i>Comment: Material in GOOD condition. No change in material condition.</i>	MISC	Assumed	3		180 sq	No
<b>Ceiling:</b> Drywall - Medium Texture <i>Comment: Material in GOOD condition. No change in material condition.</i>	MISC	Assumed	3		24 sq	No
<b>Building:</b> 01 - Main Building		<b>Room:</b> 12 - Mens Restroom - 15 x 12 x 9				
<b>Floor:</b> Linoleum and Mastic - Tan Squares <i>Comment: Material in GOOD condition. No change in material condition.</i>	MISC	Assumed	7		180 sq	No
<b>Baseboard:</b> 6" Baseboard and Mastic - Tan <i>Comment: Material in GOOD condition. No change in material condition.</i>	MISC	Assumed	8		54 ln	No
<b>Walls:</b> Drywall - Smooth Texture <i>Comment: Material in GOOD condition. No change in material condition. Mirror within the space appears to be mechanically fastened.</i>	MISC	Assumed	9		486 sq	No
<b>Walls:</b> FRP and Mastic - White <i>Comment: Material in GOOD condition. No change in material condition.</i>	MISC	Assumed	15		486	No
<b>Ceiling:</b> Drywall - Smooth Texture <i>Comment: Material in GOOD condition. No change in material condition.</i>	MISC	Assumed	9		180 sq	No

# **Functional Space Notes**

## **HAZARD MANAGEMENT SERVICES, INC.**

### **Three Year Reinspection**

**Client:** Central California Conference of 7th Day Adventist

**Site:** West Valley S.D.A Elementary

**HMS Project Number:** M17005K

**Date of Inspection:** February 13, 2017

Materials		Material Class	Percent Asbestos	Hmgns. Sampled Matrl # Here?	Footage Sq/Ln/Jnts	Friable? Yes/No
<b>Building:</b> 01 - Main Building		<b>Room:</b> 13 - Kitchen - 32 x 18 x 9				
<b>Floor:</b>	9" VFT and Mastic - Beige w/Speck	MISC	Assumed	11	576 sq	No
	<i>Comment: Material is DAMAGED.</i> <i>Comment: There are a few broken tiles at the threshold of the exterior entry/exit door of the space.</i> <i>The tiles at the threshold of exterior entry/exit door are chipped and broken, but not in a friable condition. Tiles should be replaced with non-asbestos tiles.</i>					
<b>Baseboard:</b>	2" Baseboard and Mastic - Brown	MISC	Assumed	2	25 ln	No
	<i>Comment: Material in GOOD condition.</i> <i>No change in material condition.</i> <i>On the kitchen side of the space.</i>					
<b>Baseboard:</b>	4" Baseboard and Mastic - Brown	MISC	Assumed	12	50 ln	No
	<i>Comment: Material in GOOD condition.</i> <i>No change in material condition.</i> <i>On the cabinets of the kitchen area.</i>					
<b>Baseboard:</b>	4" Baseboard and Mastic - Green	MISC	Assumed	13	25 ln	No
	<i>Comment: Material in GOOD condition.</i> <i>No change in material condition.</i> <i>On the storage side of the kitchen.</i>					
<b>Walls:</b>	Drywall - Medium Texture	MISC	Assumed	3	450 sq	No
	<i>Comment: Material in GOOD condition.</i> <i>No change in material condition.</i> <i>On the storage side of the kitchen.</i>					
<b>Walls:</b>	Drywall - Smooth Texture	MISC	Assumed	9	450 sq	No
	<i>Comment: Material in GOOD condition.</i> <i>No change in material condition.</i> <i>On the kitchen side of the space.</i>					
<b>Ceiling:</b>	Drywall - Medium Texture	MISC	Assumed	3	288 sq	No
	<i>Comment: Material in GOOD condition.</i> <i>No change in material condition.</i> <i>On the storage side of the kitchen.</i>					
<b>Ceiling:</b>	Drywall - Smooth Texture	MISC	Assumed	9	288 sq	No
	<i>Comment: Material in GOOD condition.</i> <i>No change in material condition.</i> <i>On the kitchen side of the space.</i>					
<b>Counter Top:</b>	Ceramic Tile - 6" White w/Speck-Grout	MISC	Assumed	14	45 sq	No
	<i>Comment: Material in GOOD condition.</i> <i>No change in material condition.</i> <i>Material amount includes the backsplash of the countertop as well.</i>					



# **Functional Space Notes**

## **HAZARD MANAGEMENT SERVICES, INC.**

### **Three Year Reinspection**

**Client:** Central California Conference of 7th Day Adventist

**Site:** West Valley S.D.A Elementary

**HMS Project Number:** M17005K

**Date of Inspection:** February 13, 2017

Materials	Material Class	Percent Asbestos	Hmgns. Matri #	Sampled Here?	Footage Sq/Ln/Jnts	Friable? Yes/No
<b>Building:</b> 01 - Main Building		<b>Room:</b> 14 - Attic - First Floor - 70 x 70 x 3				
<b>Floor:</b>	Drywall - Medium Texture	MISC	Assumed	3		No
	<i>Comment: Material in GOOD condition. No change in material condition. Material amount accounted for in other areas.</i>					
<b>Walls:</b>	Drywall - Bare	MISC	Assumed	26	150 sq	No
	<i>Comment: Material in GOOD condition. No change in material condition. Material Comment: No joint compound or texture coat material associated with this drywall system.</i>					
<b>Walls:</b>	Wood	NON	Non-Suspect			
<b>Ceiling:</b>	Wood	NON	Non-Suspect			
<b>Ducts:</b>	Fiberglass Insulation	NON	Non-Suspect			
	<i>Comment: No suspect material found below this insulation material.</i>					
<b>Pipes:</b>	Metal	NON	Non-Suspect			
	<i>Comment: Material wrapped around the fiberglass insulation material in various areas and at random it appears.</i>					
<b>Ducts:</b>	Metal	NON	Non-Suspect			
	<i>Comment: No duct tape visible on this metal duct working without insulation.</i>					
<b>Ducts:</b>	Silver Duct Tape	MISC	Assumed	27	15 ln	No
	<i>Comment: Material in GOOD condition. No change in material condition.</i>					
<b>Room Comments:</b>	<i>The attic could not be fully accessed during inspection due to location of hatch into space.</i>					

# Functional Space Notes

## HAZARD MANAGEMENT SERVICES, INC.

### Three Year Reinspection

Client: Central California Conference of 7th Day Adventist

Site: West Valley S.D.A Elementary

HMS Project Number: M17005K

Date of Inspection: February 13, 2017

Materials	Material Class	Percent Asbestos	Hmgns. Matrl #	Sampled Here?	Footage Sq/Ln/Jnts	Friable? Yes/No
<b>Building:</b> 01 - Main Building		<b>Room:</b> 15 - Second Floor Hallway - 75 x 6 x 8				
<b>Floor:</b> 9" VFT and Mastic - Tan with Speck	MISC	Assumed	1		382 sq	No
<i>Comment: Material in GOOD condition. No change in material condition. Material is below the carpet of the space.</i>						
<b>Floor:</b> Carpet and Mastic - Blue	MISC	Assumed	16		382 sq	No
<i>Comment: Material in GOOD condition. No change in material condition.</i>						
<b>Floor:</b> Concrete	NON	Non-Suspect				
<i>Comment: Stairs leading to the ground level.</i>						
<b>Baseboard:</b> 4" Baseboard and Mastic - Blue	MISC	Assumed	23		138 ln	No
<i>Comment: Material in GOOD condition. No change in material condition.</i>						
<b>Walls:</b> Drywall - Medium Texture	MISC	Assumed	3		1296 sq	No
<i>Comment: Material in GOOD condition. No change in material condition. There is a tackboard on the wall of the space, but appears to be mechanically fastened to the wall only.</i>						
<b>Ceiling:</b> ACT and Mastic - 12" Random Hole	MISC	Assumed	4		450 sq	No
<i>Comment: Material is DAMAGED. Comment: There are a number of tiles that have fallen off the ceiling in the space near the stairs leading to ground level. There are a number of tiles that have fallen off the ceiling in the space near the stairs leading to ground level.</i>						
<b>Ceiling:</b> Drywall - Medium Texture	MISC	Assumed	3		492 sq	No
<i>Comment: Material in GOOD condition. No change in material condition. Above the ACTs and at stairwell of the space.</i>						
<b>Removed Materials:</b>						
<b>Baseboard:</b> Wood 2"	NON	Non-Suspect				
<i>Comment: Material has been REMOVED.</i>						

# Functional Space Notes

## HAZARD MANAGEMENT SERVICES, INC.

### Three Year Reinspection

Client: Central California Conference of 7th Day Adventist      Site: West Valley S.D.A Elementary

HMS Project Number: M17005K

Date of Inspection: February 13, 2017

Materials		Material Class	Percent Asbestos	Hmgns. Sampled Matrl # Here?	Footage Sq/Ln/Jnts	Friable? Yes/No
<b>Building:</b> 01 - Main Building		<b>Room:</b> 16 - Work Room A5 - 54 x 36 x 10				
<b>Floor:</b>	9" VFT and Mastic - Tan with Speck	MISC	Assumed	1	1944 sq	No
	<i>Comment: Material in GOOD condition. No change in material condition. Comment: Unable to verify material exists still or not - left in inventory for future reference. Unable to determine if the material exists below plywood sub-flooring.</i>					
<b>Floor:</b>	Carpet and Mastic - Blue	MISC	Assumed	24	1944 sq	No
	<i>Comment: Material in GOOD condition. No change in material condition. Material appears to be laid onto a plywood floor. Unable to determine if the plywood floor is over the 9" VFTs previously listed within the space.</i>					
<b>Baseboard:</b>	Wood 2"	NON	Non-Suspect			
<b>Walls:</b>	Drywall - Medium Texture	MISC	Assumed	3	1800 sq	No
	<i>Comment: Material in GOOD condition. No change in material condition.</i>					
<b>Ceiling:</b>	ACT and Mastic - 12" Random Hole	MISC	Assumed	4	1944 sq	No
	<i>Comment: Material is DAMAGED. Comment: There are five tiles missing from the ceiling finish, but remnants of the mastic pucks remain. There are five tiles missing from the ceiling finish, but remnants of the mastic pucks remain.</i>					
<b>Ceiling:</b>	Drywall - Medium Texture	MISC	Assumed	3	1944 sq	No
	<i>Comment: Material in GOOD condition. No change in material condition. Above the ACTs in the space.</i>					
<b>Removed Materials:</b>						
<b>Baseboard:</b>	2" Baseboard and Mastic - Brown	MISC	Assumed	2	180 in	No
	<i>Comment: Material in GOOD condition. Material has been REMOVED. Not able to determine if material was ever present or if removed since the last inspection of the site.</i>					



# Functional Space Notes

## HAZARD MANAGEMENT SERVICES, INC.

### Three Year Reinspection

Client: Central California Conference of 7th Day Adventist      Site: West Valley S.D.A Elementary

HMS Project Number: M17005K

Date of Inspection: February 13, 2017

Materials	Material Class	Percent Asbestos	Hmgns. Matri #	Sampled Here?	Footage Sq/Ln/Jnts	Friable? Yes/No
<b>Building:</b> 01 - Main Building		<b>Room:</b> 17 - HVAC Closet A5 - 7 x 12 x 8				
<b>Floor:</b> 9" VFT and Mastic - Tan with Speck <i>Comment: Material is DAMAGED. Comment: The tiles are delaminating from the floor and the door into the space is not set correctly and allowed to scrape over the tiles and disturb them.</i>	MISC	Assumed	1		84 sq	Yes
<b>Baseboard:</b> 2" Baseboard and Mastic - Brown <i>Comment: Material in GOOD condition. No change in material condition.</i>	MISC	Assumed	2		38 ln	No
<b>Walls:</b> Drywall - Medium Texture <i>Comment: Material is DAMAGED. Comment: Most of the damage to the drywall is from physical impact by items being stored in space, but one section near flue pipe is peeling.</i>	MISC	Assumed	3		304 sq	Yes
<b>Ceiling:</b> Drywall - Medium Texture <i>Comment: Material is SIG.DAM.. Comment: Material is damaged in two location. The first location is water damage next to the attic access hatch in the space. The second area is at the flue pipe exhaust and is causing delamination of the material paint and texture coat.</i>	MISC	Assumed	3		84 sq	Yes
<b>HVAC Tape:</b> Foil Tape <i>Comment: Material in GOOD condition. No change in material condition.</i>	MISC	Assumed	19		50 ln	No
<b>Duct Tape:</b> HVAC Duct Tape <i>Comment: Material in GOOD condition. No change in material condition.</i>	MISC	Assumed	18		30 ln	Yes
<i>Room Comments: Attic access within this space.</i>						
<b>Building:</b> 01 - Main Building		<b>Room:</b> 18- A3 - Classroom - 36 x 36 x 10				
<b>Floor:</b> Carpet and Mastic - Blue Multi <i>Comment: Material in GOOD condition. No change in material condition. Carpet appears to be on a plywood substrate, but could not determine if tiles exist within the space as well.</i>	MISC	Assumed	5		1296 sq	No
<b>Baseboard:</b> Wood 2"	NON	Non-Suspect				
<b>Walls:</b> CMU and Mortar <i>Comment: Material in GOOD condition. No change in material condition.</i>	MISC	Assumed	20		216 sq	No
<b>Walls:</b> Drywall - Medium Texture <i>Comment: Material in GOOD condition. No change in material condition.</i>	MISC	Assumed	3		1224 sq	No
<b>Ceiling:</b> ACT and Mastic - 12" Random Hole <i>Comment: Material in GOOD condition. No change in material condition.</i>	MISC	Assumed	4		1296 sq	No
<b>Ceiling:</b> Drywall - Medium Texture <i>Comment: Material in GOOD condition. No change in material condition. Above the ACTs in the space.</i>	MISC	Assumed	3		1296 sq	No
<b>Counter Top:</b> Ceramic Tile - Light Yellow w/Grout <i>Comment: Material in GOOD condition. No change in material condition. Material amount includes the amount of material on the backsplash.</i>	MISC	Assumed	17		36 sq	No

# Functional Space Notes

## HAZARD MANAGEMENT SERVICES, INC.

### Three Year Reinspection

Client: Central California Conference of 7th Day Adventist      Site: West Valley S.D.A Elementary  
HMS Project Number: M17005K      Date of Inspection: February 13, 2017

Materials		Material Class	Percent Asbestos	Hmgns. Matrl #	Sampled Here?	Footage Sq/Ln/Jnts	Friable? Yes/No
<b>Building:</b> 01 - Main Building		<b>Room:</b> 19 - A4 - Music - 36 x 36 x 10					
<b>Floor:</b>	Carpet and Mastic - Blue Multi	MISC	Assumed	5		2592 sq	No
	<i>Comment: Material in GOOD condition.  No change in material condition.  Material amount reflects that there appears to be two layers of the same carpet on the floor. Could not determine if tiles exist below the carpet in the space.</i>						
<b>Baseboard:</b>	Wood 2"	NON	Non-Suspect				
<b>Walls:</b>	Drywall - Medium Texture	MISC	Assumed	3		1440 sq	No
	<i>Comment: Material in GOOD condition.  No change in material condition.</i>						
<b>Ceiling:</b>	ACT and Mastic - 12" Random Hole	MISC	Assumed	4		1296 sq	No
	<i>Comment: Material in GOOD condition.  No change in material condition.</i>						
<b>Ceiling:</b>	Drywall - Medium Texture	MISC	Assumed	3		1296 sq	No
	<i>Comment: Material in GOOD condition.  No change in material condition.  Above the ACTs in the space.</i>						
<b>Counter Top:</b>	Ceramic Tile - Light Yellow w/Grout	MISC	Assumed	17		38 sq	No
	<i>Comment: Material in GOOD condition.  No change in material condition.  Material amount includes the materia on the backsplash.</i>						
<b>Building:</b> 01 - Main Building		<b>Room:</b> 20 - Attic - Second Floor - 61 x 78 x 4					
<b>Floor:</b>	Drywall - Medium Texture	MISC	Assumed	3			No
	<i>Comment: Material in GOOD condition.  No change in material condition.  Material amount accounted for in other areas.</i>						
<b>Walls:</b>	Wood	NON	Non-Suspect				
<b>Ceiling:</b>	Wood	NON	Non-Suspect				
<b>Pipes:</b>	Metal	NON	Non-Suspect				
	<i>Comment: Flue pipe running up to the roof only visible pipe.</i>						
<b>Room Comments:</b>	<i>Not all areas of the attic visible during the inspection due to access from HVAC Closet.</i>						

# Functional Space Notes

## HAZARD MANAGEMENT SERVICES, INC.

### Three Year Reinspection

Client: Central California Conference of 7th Day Adventist      Site: West Valley S.D.A Elementary

HMS Project Number: M17005K

Date of Inspection: February 13, 2017

Materials	Material Class	Percent Asbestos	Hmgns. Matrl #	Sampled Here?	Footage Sq/Ln/Jnts	Friable? Yes/No
<b>Building:</b> 02 - Annex Classroom Building A		<b>Room:</b> 01 - Classroom - 50 x 18 x 12				
<b>Floor:</b> Carpet and Mastic - Red	MISC	Assumed	28		900 sq	No
<i>Comment: Material in GOOD condition. No change in material condition.</i>						
<b>Baseboard:</b> Wood 3" Baseboard	NON	Non-Suspect				
<i>Comment: Material is nailed onto wall surfaces.</i>						
<b>Walls:</b> Drywall - Smooth Texture Annex	MISC	Assumed	29		1632 sq	No
<i>Comment: Material in GOOD condition. No change in material condition.</i>						
<b>Ceiling:</b> Wood	NON	Non-Suspect				
<b>Building:</b> 02 - Annex Classroom Building A		<b>Room:</b> 02 - Storage Space - 15 x 8 x 10				
<b>Floor:</b> Carpet and Mastic - Tan	MISC	Assumed	30		120 sq	No
<i>Comment: Material in GOOD condition. No change in material condition.</i>						
<b>Baseboard:</b> Wood 3" Baseboard	NON	Non-Suspect				
<i>Comment: Material is nailed onto wall surfaces.</i>						
<b>Walls:</b> Drywall - Smooth Texture Annex	MISC	Assumed	29		345 sq	No
<i>Comment: Material in GOOD condition. No change in material condition.</i>						
<b>Walls:</b> Stucco	MISC	Assumed	31		115 sq	No
<i>Comment: Material in GOOD condition. No change in material condition.</i>						
<b>Ceiling:</b> Drywall - Smooth Texture Annex	MISC	Assumed	29		120 sq	No
<i>Comment: Material in GOOD condition. No change in material condition.</i>						
<b>Building:</b> 02 - Annex Classroom Building A		<b>Room:</b> 03 - Office Closet - 4 x 8 x 9				
<b>Floor:</b> Carpet and Mastic - Red	MISC	Assumed	28		32 sq	No
<i>Comment: Material in GOOD condition. No change in material condition.</i>						
<b>Baseboard:</b> Wood 3" Baseboard	NON	Non-Suspect				
<i>Comment: Material is nailed onto wall surfaces.</i>						
<b>Walls:</b> Drywall - Smooth Texture Annex	MISC	Assumed	29		216 sq	No
<i>Comment: Material in GOOD condition. No change in material condition.</i>						
<b>Ceiling:</b> Drywall - Smooth Texture Annex	MISC	Assumed	29		32 sq	No
<i>Comment: Material in GOOD condition. No change in material condition.</i>						

# ***Functional Space Notes***

## **HAZARD MANAGEMENT SERVICES, INC.**

### **Three Year Reinspection**

**Client:** Central California Conference of 7th Day Adventist    **Site:** West Valley S.D.A Elementary

**HMS Project Number:** M17005K

**Date of Inspection:** February 13, 2017

Materials		Material Class	Percent Asbestos	Hmgns. Matrl #	Sampled Here?	Footage Sq/Ln/Jnts	Friable? Yes/No
<b>Building:</b> 02 - Annex Classroom Building A		<b>Room:</b> 04 - Classroom East - 27 x 18 x 12					
<b>Floor:</b>	12" VFT and Mastic - Grey Oatmeal	MISC	Assumed	34		10 sq	No
	<i>Comment: Material in GOOD condition. No change in material condition. Material appears to be for repairs of the 9" VFT flooring.</i>						
<b>Floor:</b>	9" VFT and Mastic - Dark Brown	MISC	Assumed	33		486 sq	No
	<i>Comment: Material in GOOD condition. No change in material condition. Material appears to extend below the carpet.</i>						
<b>Floor:</b>	Carpet and Mastic - Brown / Blue	MISC	Assumed	32		243 sq	No
	<i>Comment: Material in GOOD condition. No change in material condition.</i>						
<b>Baseboard:</b>	Wood 3" Baseboard	NON	Non-Suspect				
	<i>Comment: Material is nailed onto wall surfaces.</i>						
<b>Walls:</b>	Drywall - Smooth Texture Annex	MISC	Assumed	29		1080 sq	No
	<i>Comment: Material in GOOD condition. No change in material condition.</i>						
<b>Ceiling:</b>	Wood	NON	Non-Suspect				



# **Functional Space Notes**

## **HAZARD MANAGEMENT SERVICES, INC.**

### **Three Year Reinspection**

**Client:** Central California Conference of 7th Day Adventist    **Site:** West Valley S.D.A Elementary

**HMS Project Number:** M17005K

**Date of Inspection:** February 13, 2017

Materials	Material Class	Percent Asbestos	Hmgns. Matrl #	Sampled Here?	Footage Sq/Ln/Jnts	Friable? Yes/No
<b>Building:</b> 03 - Annex Classroom Building B		<b>Room:</b> 01 - Break Room - 12 x 12 x 8				
<b>Floor:</b>	Wood Laminate Flooring	NON	Non-Suspect			
<b>Baseboard:</b>	Wood 3" Baseboard	NON	Non-Suspect			
	<i>Comment: Material is nailed onto wall surfaces.</i>					
<b>Walls:</b>	Drywall - Light Knockdown Texture	MISC	Assumed	35	384 sq	No
	<i>Comment: Material in GOOD condition. No change in material condition.</i>					
<b>Ceiling:</b>	12" ACT and Glue - Multi Random Holes	MISC	Assumed	36	144 sq	No
	<i>Comment: Material in GOOD condition. No change in material condition.</i>					
<b>Ceiling:</b>	Drywall - Light Knockdown Texture	MISC	Assumed	35	144 sq	No
	<i>Comment: Material in GOOD condition. No change in material condition. Above the ACTs in the space.</i>					
<b>Building:</b> 03 - Annex Classroom Building B		<b>Room:</b> 02 - East Classroom - 32 x 30 x 12				
<b>Floor:</b>	12" VFT and Mastic - Yellow/Tan Pattern	MISC	Assumed	37	960 sq	No
	<i>Comment: Material in GOOD condition. No change in material condition.</i>					
<b>Baseboard:</b>	Wood 2"	NON	Non-Suspect			
<b>Walls:</b>	Drywall - Large Knockdown Texture	MISC	Assumed	38	1488 sq	No
	<i>Comment: Material in GOOD condition. No change in material condition.</i>					
<b>Ceiling:</b>	2' x 2' ACTs	MISC	Assumed	39	960 sq	No
	<i>Comment: Material in GOOD condition. No change in material condition. Could not access due to occupants during inspection to verify if tiles are glued or possibly transite.</i>					

# **Functional Space Notes**

## **HAZARD MANAGEMENT SERVICES, INC.**

### **Three Year Reinspection**

**Client:** Central California Conference of 7th Day Adventist      **Site:** West Valley S.D.A Elementary

**HMS Project Number:** M17005K

**Date of Inspection:** February 13, 2017

Materials	Material Class	Percent Asbestos	Hmgns. Sampled Matrl # Here?	Footage Sq/Ln/Jnts	Friable? Yes/No
<b>Building:</b> 03 - Annex Classroom Building B		<b>Room:</b> 03 - East Classroom Restroom - 2 x 10 x 8			
<b>Floor:</b> Linoleum and Mastic - Grey Pebble <i>Comment: Material in GOOD condition. No change in material condition.</i>	MISC	Assumed	40	20 sq	No
<b>Baseboard:</b> 4" Baseboard and Glue - Off-White <i>Comment: Material in GOOD condition. No change in material condition.</i>	MISC	Assumed	44	6	No
<b>Baseboard:</b> 6" Baseboard and Mastic - Yellow/Tan <i>Comment: Material in GOOD condition. No change in material condition.</i>	MISC	Assumed	41	18 ln	No
<b>Walls:</b> Drywall - Stipple Finish <i>Comment: Material in GOOD condition. No change in material condition.</i>	MISC	Assumed	42	192 sq	No
<b>Walls:</b> FRP and Glue - Painted <i>Comment: Material in GOOD condition. No change in material condition. Wainscoating material on two walls of the space.</i>	MISC	Assumed	43	29 sq	No
<b>Ceiling:</b> Drywall - Stipple Finish <i>Comment: Material in GOOD condition. No change in material condition.</i>	MISC	Assumed	42	6 ln	No
<b>Building:</b> 03 - Annex Classroom Building B		<b>Room:</b> 04 - Restroom - 15 x 10 x 9			
<b>Floor:</b> Linoleum and Mastic - Grey Pebble <i>Comment: Material in GOOD condition. No change in material condition.</i>	MISC	Assumed	40	150 sq	No
<b>Baseboard:</b> 6" Baseboard and Mastic - Yellow/Tan <i>Comment: Material in GOOD condition. No change in material condition. Material is painted over.</i>	MISC	Assumed	41	50 ln	No
<b>Walls:</b> Drywall - Stipple Finish <i>Comment: Material in GOOD condition. No change in material condition.</i>	MISC	Assumed	42	450 sq	No
<b>Walls:</b> FRP and Glue - Painted <i>Comment: Material in GOOD condition. No change in material condition. Wainscoating material on two walls of the space.</i>	MISC	Assumed	43	225 sq	No
<b>Ceiling:</b> Drywall - Stipple Finish <i>Comment: Material in GOOD condition. No change in material condition.</i>	MISC	Assumed	42	150 ln	No

# ***Functional Space Notes***

## **HAZARD MANAGEMENT SERVICES, INC.**

### **Three Year Reinspection**

**Client:** Central California Conference of 7th Day Adventist      **Site:** West Valley S.D.A Elementary

**HMS Project Number:** M17005K

**Date of Inspection:** February 13, 2017

Materials	Material Class	Percent Asbestos	Hmgns. Sampled Matrl # Here?	Footage Sq/Ln/Jnts	Friable? Yes/No
<b>Building:</b> 03 - Annex Classroom Building B <b>Room:</b> 05 - Supply Room - 6 x 3 x 8					
<b>Floor:</b> 9" VFT and Mastic - Brown / Green <i>Comment: Material in GOOD condition. No change in material condition.</i>	MISC	Assumed	45	18 sq	No
<b>Walls:</b> Drywall - Sand Texture <i>Comment: Material in GOOD condition. No change in material condition.</i>	MISC	Assumed	46	144 sq	No
<b>Ceiling:</b> Drywall - Sand Texture <i>Comment: Material in GOOD condition. No change in material condition.</i>	MISC	Assumed	46	18 sq	No
<b>Building:</b> 03 - Annex Classroom Building B <b>Room:</b> 06 - West Exterior Restroom - 15 x 10 x 8					
<b>Floor:</b> Linoleum and Mastic - Grey Pebble <i>Comment: Material in GOOD condition. No change in material condition.</i>	MISC	Assumed	40	150 sq	No
<b>Baseboard:</b> 6" Baseboard and Mastic - Blue <i>Comment: Material in GOOD condition. No change in material condition.</i>	MISC	Assumed	47	50 ln	No
<b>Walls:</b> Drywall - Stipple Finish <i>Comment: Material in GOOD condition. No change in material condition.</i>	MISC	Assumed	42	450 sq	No
<b>Walls:</b> FRP and Glue - Painted <i>Comment: Material in GOOD condition. No change in material condition. Wainscoting material on two walls of the space.</i>	MISC	Assumed	43	225 sq	No
<b>Ceiling:</b> Drywall - Stipple Finish <i>Comment: Material in GOOD condition. No change in material condition.</i>	MISC	Assumed	42	150 ln	No
<b>Building:</b> 03 - Annex Classroom Building B <b>Room:</b> 07 - West Classroom - 32 x 30 x 12					
<b>Floor:</b> Carpet and Mastic - Red <i>Comment: Material in GOOD condition. No change in material condition.</i>	MISC	Assumed	28	960 sq	No
<b>Baseboard:</b> Wood 2"	NON	Non-Suspect			
<b>Walls:</b> Drywall - Large Knockdown Texture <i>Comment: Material in GOOD condition. No change in material condition.</i>	MISC	Assumed	38	1488 sq	No
<b>Ceiling:</b> 2' x 2' ACTs <i>Comment: Material in GOOD condition. No change in material condition. Could not access due to occupants during inspection to verify if tiles are glued or possibly transite.</i>	MISC	Assumed	39	960 sq	No

# ***Functional Space Notes***

## **HAZARD MANAGEMENT SERVICES, INC.**

### **Three Year Reinspection**

**Client:** Central California Conference of 7th Day Adventist    **Site:** West Valley S.D.A Elementary

**HMS Project Number:** M17005K

**Date of Inspection:** February 13, 2017

Materials	Material Class	Percent Asbestos	Hmgns. Matrl #	Sampled Here?	Footage Sq/Ln/Jnts	Friable? Yes/No
<b>Building:</b> 03 - Annex Classroom Building B		<b>Room:</b> 08 - Office - 12 x 12 x 8				
<b>Floor:</b>	Wood Laminate Flooring	NON	Non-Suspect			
<b>Baseboard:</b>	Wood 3" Baseboard	NON	Non-Suspect			
	<i>Comment: Material is nailed onto wall surfaces.</i>					
<b>Walls:</b>	Drywall - Light Knockdown Texture	MISC	Assumed	35	384 sq	No
	<i>Comment: Material in GOOD condition. No change in material condition.</i>					
<b>Ceiling:</b>	12" ACT and Glue - Multi Random Holes	MISC	Assumed	36	144 sq	No
	<i>Comment: Material in GOOD condition. No change in material condition.</i>					
<b>Ceiling:</b>	Drywall - Light Knockdown Texture	MISC	Assumed	35	144 sq	No
	<i>Comment: Material in GOOD condition. No change in material condition.</i>					

***Functional Space Notes***  
**HAZARD MANAGEMENT SERVICES, INC.**  
**Three Year Reinspection**

**Client:** Central California Conference of 7th Day Adventist    **Site:** West Valley S.D.A Elementary  
**HMS Project Number:** M17005K    **Date of Inspection:** February 13, 2017

---

**Non-Inspected Rooms and Comments:**

01 - Main Building - 21 - Exterior: Exterior inspection of materials not included as this inspection was conducted for AHERA compliance and no exterior components met the AHERA requirements.

01 - Main Building - 22 - Basement: No basement space found to be associated with this building.

# ***Homogeneous Material Records***

## **HAZARD MANAGEMENT SERVICES, INC.**

### **AHERA Three Year Re-Inspection**

**Client:** Central California Conference of 7th Day Adventist    **Site:** West Valley S.D.A Elementary

**HMS Project Number:** M17005K

**Date of Inspection:** 2/13/2017

---

#### **Table of Contents**

01 - Main Building .....	1
02 - Annex Classroom Building A .....	8
03 - Annex Classroom Building B .....	10



# Hazard Management Services, Inc.

AHERA Three Year Re-Inspection

Project Number: M17005K

Date of Re-inspection: 2/13/2017

District: Central California Conference of 7th Day Adventist

Site: West Valley S.D.A Elementary

## 01 - Main Building Building Comment:

#	Building Name	Mat'l # Class	Material	Sample Number(s)	Location	Percent Asbestos	Feet	Friable	Condition & Comments
1	01 - Main Building	1 MISC	9" VFT and Mastic - Tan with Speck	NOT SAMPLED	01 - First Floor Hallway - Floor	Assumed	468 Square	No	Material is DAMAGED. Comment: Material is chipped and broken at threshold leading into space from exterior entry/exit points.
1	01 - Main Building	1 MISC	9" VFT and Mastic - Tan with Speck	NOT SAMPLED	02 - Main Office - Floor	Assumed	432 Square	No	Material in GOOD condition. No change in material condition.
1	01 - Main Building	1 MISC	9" VFT and Mastic - Tan with Speck	NOT SAMPLED	03 - Principal's Office - Floor	Assumed	240 Square	No	Material in GOOD condition. No change in material condition.
1	01 - Main Building	1 MISC	9" VFT and Mastic - Tan with Speck	NOT SAMPLED	04 - Small Office - Floor	Assumed	81 Square	No	Material in GOOD condition. No change in material condition.
1	01 - Main Building	1 MISC	9" VFT and Mastic - Tan with Speck	NOT SAMPLED	05 - Grades 3 & 4 - Floor	Assumed	1080 Square	No	Material in GOOD condition. No change in material condition.
1	01 - Main Building	1 MISC	9" VFT and Mastic - Tan with Speck	NOT SAMPLED	06 - Grades 1 & 2 - Floor	Assumed	1296 Square	No	Material in GOOD condition. No change in material condition.
1	01 - Main Building	1 MISC	9" VFT and Mastic - Tan with Speck	NOT SAMPLED	07 - Teacher's Workroom - Floor	Assumed	50 Square	No	Material in GOOD condition. No change in material condition.
1	01 - Main Building	1 MISC	9" VFT and Mastic - Tan with Speck	NOT SAMPLED	15 - Second Floor Hallway - Floor	Assumed	382 Square	No	Material in GOOD condition. No change in material condition.
1	01 - Main Building	1 MISC	9" VFT and Mastic - Tan with Speck	NOT SAMPLED	16 - Work Room A5 - Floor	Assumed	1944 Square	No	Material in GOOD condition. No change in material condition. Comment: Unable to verify material exists still or not - in inventory for future reference.
1	01 - Main Building	1 MISC	9" VFT and Mastic - Tan with Speck	NOT SAMPLED	17 - HVAC Closet A5 - Floor	Assumed	84 Square	Yes	Material is DAMAGED. Comment: The tiles are delaminating from the floor and the door into the space is not set correctly and allowed scrape over the tiles and disturb them.
1	01 - Main Building	2 MISC	2" Baseboard and Mastic - Brown	NOT SAMPLED	01 - First Floor Hallway - Baseboard	Assumed	168 Linear	No	Material in GOOD condition. No change in material condition.
1	01 - Main Building	2 MISC	2" Baseboard and Mastic - Brown	NOT SAMPLED	07 - Teacher's Workroom - Baseboard	Assumed	70 Linear	No	Material in GOOD condition. No change in material condition.



# Hazard Management Services, Inc.

## AHERA Three Year Re-Inspection

Project Number: M17005K  
Date of Re-inspection: 2/13/2017

District: Central California Conference of 7th Day Adventist  
Site: West Valley S.D.A Elementary

#	Building Name	Mat'l # Class	Material	Sample Number(s)	Location	Percent Asbestos	Feet	Friable	Condition & Comments
1	01 - Main Building	2 MISC	2" Baseboard and Mastic - Brown	NOT SAMPLED	13 - Kitchen - Baseboard	Assumed	25 Linear	No	Material in GOOD condition. No change in material condition.
1	01 - Main Building	2 MISC	2" Baseboard and Mastic - Brown	NOT SAMPLED	16 - Work Room A5 - Baseboard	Assumed	180 Linear	No	Material in GOOD condition. Material has been REMOVED. Not able to determine if material was ever present or removed since the last inspection of the site.
1	01 - Main Building	2 MISC	2" Baseboard and Mastic - Brown	NOT SAMPLED	17 - HVAC Closet A5 - Baseboard	Assumed	38 Linear	No	Material in GOOD condition. No change in material condition.
1	01 - Main Building	3 MISC	Drywall - Medium Texture	NOT SAMPLED	01 - First Floor Hallway - Walls/Ceiling	Assumed	1812 Square	No	Material in GOOD condition. No change in material condition.
1	01 - Main Building	3 MISC	Drywall - Medium Texture	NOT SAMPLED	02 - Main Office - Walls/Ceiling	Assumed	1104 Square	No	Material in GOOD condition. No change in material condition.
1	01 - Main Building	3 MISC	Drywall - Medium Texture	NOT SAMPLED	03 - Principal's Office - Walls/Ceiling	Assumed	752 Square	No	Material in GOOD condition. No change in material condition.
1	01 - Main Building	3 MISC	Drywall - Medium Texture	NOT SAMPLED	04 - Small Office - Walls/Ceiling	Assumed	369 Square	No	Material in GOOD condition. No change in material condition.
1	01 - Main Building	3 MISC	Drywall - Medium Texture	NOT SAMPLED	05 - Grades 3 & 4 - Walls/Ceiling	Assumed	2400 Square	No	Material in GOOD condition. No change in material condition.
1	01 - Main Building	3 MISC	Drywall - Medium Texture	NOT SAMPLED	06 - Grades 1 & 2 - Walls/Ceiling	Assumed	2736 Square	No	Material in GOOD condition. No change in material condition.
1	01 - Main Building	3 MISC	Drywall - Medium Texture	NOT SAMPLED	07 - Teacher's Workroom - Walls/Ceiling	Assumed	824 Square	No	Material in GOOD condition. No change in material condition.
1	01 - Main Building	3 MISC	Drywall - Medium Texture	NOT SAMPLED	08 - Custodial Closet - Walls/Ceiling	Assumed	276 Square	No	Material in GOOD condition. No change in material condition.
1	01 - Main Building	3 MISC	Drywall - Medium Texture	NOT SAMPLED	09 - Womens Restroom Foyer - Walls/Ceiling	Assumed	160 Square	No	Material in GOOD condition. No change in material condition.
1	01 - Main Building	3 MISC	Drywall - Medium Texture	NOT SAMPLED	11 - Mens Restroom Foyer - Walls/Ceiling	Assumed	204 Square	No	Material in GOOD condition. No change in material condition.



# Hazard Management Services, Inc.

## AHERA Three Year Re-Inspection

Project Number: M17005K  
Date of Re-inspection: 2/13/2017

District: Central California Conference of 7th Day Adventist  
Site: West Valley S.D.A Elementary

#	Building Name	Mat'l # Class	Material	Sample Number(s)	Location	Percent Asbestos	Feet	Friable	Condition & Comments
1	01 - Main Building	3 MISC	Drywall - Medium Texture	NOT SAMPLED	13 - Kitchen - Walls/Ceiling	Assumed	738 Square	No	Material in GOOD condition. No change in material condition.
1	01 - Main Building	3 MISC	Drywall - Medium Texture	NOT SAMPLED	14 - Attic - First Floor - Floor	Assumed	0 Square	No	Material in GOOD condition. No change in material condition.
1	01 - Main Building	3 MISC	Drywall - Medium Texture	NOT SAMPLED	15 - Second Floor Hallway - Walls/Ceiling	Assumed	1788 Square	No	Material in GOOD condition. No change in material condition.
1	01 - Main Building	3 MISC	Drywall - Medium Texture	NOT SAMPLED	16 - Work Room A5 - Walls/Ceiling	Assumed	3744 Square	No	Material in GOOD condition. No change in material condition.
1	01 - Main Building	3 MISC	Drywall - Medium Texture	NOT SAMPLED	17 - HVAC Closet A5 - Walls/Ceiling	Assumed	388 Square	Yes	Material is DAMAGED. Comment: Most of the damage to the drywall is from physical impact by items being stored in space, but one section near flue pipe is peeling.
1	01 - Main Building	3 MISC	Drywall - Medium Texture	NOT SAMPLED	18 - A3 - Classroom - Walls/Ceiling	Assumed	2520 Square	No	Material in GOOD condition. No change in material condition.
1	01 - Main Building	3 MISC	Drywall - Medium Texture	NOT SAMPLED	19 - A4 - Music - Walls/Ceiling	Assumed	2736 Square	No	Material in GOOD condition. No change in material condition.
1	01 - Main Building	3 MISC	Drywall - Medium Texture	NOT SAMPLED	20 - Attic - Second Floor - Floor	Assumed	0 Square	No	Material in GOOD condition. No change in material condition.
1	01 - Main Building	4 MISC	ACT and Mastic - 12" Random Hole	NOT SAMPLED	01 - First Floor Hallway - Ceiling	Assumed	468 Square	No	Material is DAMAGED. Comment: Material has several spots of impact from what appears to be a hammer face or possibly end of mop handle.
1	01 - Main Building	4 MISC	ACT and Mastic - 12" Random Hole	NOT SAMPLED	05 - Grades 3 & 4 - Ceiling	Assumed	1080 Square	No	Material in GOOD condition. No change in material condition.
1	01 - Main Building	4 MISC	ACT and Mastic - 12" Random Hole	NOT SAMPLED	06 - Grades 1 & 2 - Ceiling	Assumed	1296 Square	No	Material in GOOD condition. No change in material condition.
1	01 - Main Building	4 MISC	ACT and Mastic - 12" Random Hole	NOT SAMPLED	07 - Teacher's Workroom - Ceiling	Assumed	25 Square	No	Material in GOOD condition. No change in material condition.



# Hazard Management Services, Inc.

## AHERA Three Year Re-Inspection

Project Number: M17005K  
Date of Re-inspection: 2/13/2017

District: Central California Conference of 7th Day Adventist  
Site: West Valley S.D.A Elementary

#	Building Name	Mat'l # Class	Material	Sample Number(s)	Location	Percent Asbestos	Feet	Friable	Condition & Comments
1	01 - Main Building	4 MISC	ACT and Mastic - 12" Random Hole	NOT SAMPLED	15 - Second Floor Hallway - Ceiling	Assumed	450 Square	No	Material is DAMAGED. Comment: There are a number of tiles that have fallen the ceiling in the space near the stairs leading to ground level.
1	01 - Main Building	4 MISC	ACT and Mastic - 12" Random Hole	NOT SAMPLED	16 - Work Room A5 - Ceiling	Assumed	1944 Square	No	Material is DAMAGED. Comment: There are five tiles missing from the ceiling finish, but remnants of the mastic pucks remain.
1	01 - Main Building	4 MISC	ACT and Mastic - 12" Random Hole	NOT SAMPLED	18- A3 - Classroom - Ceiling	Assumed	1296 Square	No	Material in GOOD condition. No change in material condition.
1	01 - Main Building	4 MISC	ACT and Mastic - 12" Random Hole	NOT SAMPLED	19 - A4 - Music - Ceiling	Assumed	1296 Square	No	Material in GOOD condition. No change in material condition.
1	01 - Main Building	5 MISC	Carpet and Mastic - Blue Multi	NOT SAMPLED	05 - Grades 3 & 4 - Floor	Assumed	1080 Square	No	Material in GOOD condition. No change in material condition.
1	01 - Main Building	5 MISC	Carpet and Mastic - Blue Multi	NOT SAMPLED	06 - Grades 1 & 2 - Floor	Assumed	1296 Square	No	Material in GOOD condition. No change in material condition.
1	01 - Main Building	5 MISC	Carpet and Mastic - Blue Multi	NOT SAMPLED	18- A3 - Classroom - Floor	Assumed	1296 Square	No	Material in GOOD condition. No change in material condition.
1	01 - Main Building	5 MISC	Carpet and Mastic - Blue Multi	NOT SAMPLED	19 - A4 - Music - Floor	Assumed	2592 Square	No	Material in GOOD condition. No change in material condition.
1	01 - Main Building	6 MISC	Ceramic Tile - 4" Grey w/Grout	NOT SAMPLED	05 - Grades 3 & 4 - Counter Top	Assumed	72 Square	No	Material in GOOD condition. No change in material condition.
1	01 - Main Building	6 MISC	Ceramic Tile - 4" Grey w/Grout	NOT SAMPLED	07 - Teacher's Workroom - Counter Top	Assumed	70 Square	No	Material in GOOD condition. No change in material condition.
1	01 - Main Building	7 MISC	Linoleum and Mastic - Tan Squares	NOT SAMPLED	09 - Womens Restroom Foyer - Floor	Assumed	15 Square	No	Material in GOOD condition. No change in material condition.
1	01 - Main Building	7 MISC	Linoleum and Mastic - Tan Squares	NOT SAMPLED	10 - Womens Restroom - Floor	Assumed	180 Square	No	Material in GOOD condition. No change in material condition.
1	01 - Main Building	7 MISC	Linoleum and Mastic - Tan Squares	NOT SAMPLED	11 - Mens Restroom Foyer - Floor	Assumed	24 Square	No	Material in GOOD condition. No change in material condition.

INSPECTED BY: Chris Chipponeri (EPA and OSHA accreditations attached)

Date Printed: 2/27/2017



# Hazard Management Services, Inc.

## AHERA Three Year Re-Inspection

Project Number: M17005K  
Date of Re-Inspection: 2/13/2017

District: Central California Conference of 7th Day Adventist  
Site: West Valley S.D.A Elementary

#	Building Name	Mat'l # Class	Material	Sample Number(s)	Location	Percent Asbestos	Feet	Friable	Condition & Comments
1	01 - Main Building	7 MISC	Linoleum and Mastic - Tan Squares	NOT SAMPLED	12 - Mens Restroom - Floor	Assumed	180 Square	No	Material in GOOD condition. No change in material condition.
1	01 - Main Building	8 MISC	6" Baseboard and Mastic - Tan	NOT SAMPLED	09 - Womens Restroom Foyer - Baseboard	Assumed	16 Linear	No	Material in GOOD condition. No change in material condition.
1	01 - Main Building	8 MISC	6" Baseboard and Mastic - Tan	NOT SAMPLED	10 - Womens Restroom - Baseboard	Assumed	54 Linear	No	Material in GOOD condition. No change in material condition.
1	01 - Main Building	8 MISC	6" Baseboard and Mastic - Tan	NOT SAMPLED	11 - Mens Restroom Foyer - Baseboard	Assumed	20 Linear	No	Material in GOOD condition. No change in material condition.
1	01 - Main Building	8 MISC	6" Baseboard and Mastic - Tan	NOT SAMPLED	12 - Mens Restroom - Baseboard	Assumed	54 Linear	No	Material in GOOD condition. No change in material condition.
1	01 - Main Building	9 MISC	Drywall - Smooth Texture	NOT SAMPLED	10 - Womens Restroom - Walls/Ceiling	Assumed	666 Square	No	Material in GOOD condition. No change in material condition.
1	01 - Main Building	9 MISC	Drywall - Smooth Texture	NOT SAMPLED	12 - Mens Restroom - Walls/Ceiling	Assumed	666 Square	No	Material in GOOD condition. No change in material condition.
1	01 - Main Building	9 MISC	Drywall - Smooth Texture	NOT SAMPLED	13 - Kitchen - Walls/Ceiling	Assumed	738 Square	No	Material in GOOD condition. No change in material condition.
1	01 - Main Building	10 MISC	FRP and Mastic -White w/Scratch Pattern	NOT SAMPLED	10 - Womens Restroom - Walls	Assumed	122 Square	No	Material in GOOD condition. No change in material condition.
1	01 - Main Building	11 MISC	9" VFT and Mastic - Beige w/Spec	NOT SAMPLED	13 - Kitchen - Floor	Assumed	576 Square	No	Material is DAMAGED. Comment: There are a few broken tiles at the threshold of the exterior entry/ext door of the space.
1	01 - Main Building	12 MISC	4" Baseboard and Mastic - Brown	NOT SAMPLED	13 - Kitchen - Baseboard	Assumed	50 Linear	No	Material in GOOD condition. No change in material condition.
1	01 - Main Building	13 MISC	4" Baseboard and Mastic - Green	NOT SAMPLED	13 - Kitchen - Baseboard	Assumed	25 Linear	No	Material in GOOD condition. No change in material condition.
1	01 - Main Building	14 MISC	Ceramic Tile - 6" White w/Spec-Grout	NOT SAMPLED	13 - Kitchen - Counter Top	Assumed	45 Square	No	Material in GOOD condition. No change in material condition.



# Hazard Management Services, Inc.

## AHERA Three Year Re-Inspection

Project Number: M17005K

Date of Re-inspection: 2/13/2017

District: Central California Conference of 7th Day Adventist

Site: West Valley S.D.A Elementary

#	Building Name	Mat'l # Class	Material	Sample Number(s)	Location	Percent Asbestos	Feet	Friable	Condition & Comments
1	01 - Main Building	15 MISC	FRP and Mastic - White	NOT SAMPLED	12 - Mens Restroom - Walls	Assumed	486	No	Material in GOOD condition. No change in material condition.
1	01 - Main Building	16 MISC	Carpet and Mastic - Blue	NOT SAMPLED	04 - Small Office - Floor	Assumed	81 Square	No	Material has been REMOVED. Comment: Material may have been misidentified during previous inspection or may have been replaced.
1	01 - Main Building	16 MISC	Carpet and Mastic - Blue	NOT SAMPLED	15 - Second Floor Hallway - Floor	Assumed	382 Square	No	Material in GOOD condition. No change in material condition.
1	01 - Main Building	17 MISC	Ceramic Tile - Light Yellow w/Grout	NOT SAMPLED	18 - A3 - Classroom - Counter Top	Assumed	36 Square	No	Material in GOOD condition. No change in material condition.
1	01 - Main Building	17 MISC	Ceramic Tile - Light Yellow w/Grout	NOT SAMPLED	19 - A4 - Music - Counter Top	Assumed	38 Square	No	Material in GOOD condition. No change in material condition.
1	01 - Main Building	18 MISC	HVAC Duct Tape	NOT SAMPLED	17 - HVAC Closet A5 - Duct Tape	Assumed	30 Linear	Yes	Material in GOOD condition. No change in material condition.
1	01 - Main Building	19 MISC	Foil Tape	NOT SAMPLED	17 - HVAC Closet A5 - HVAC Tape	Assumed	50 Linear	No	Material in GOOD condition. No change in material condition.
1	01 - Main Building	20 MISC	CMU and Mortar	NOT SAMPLED	18 - A3 - Classroom - Walls	Assumed	216 Square	No	Material in GOOD condition. No change in material condition.
1	01 - Main Building	21 MISC	Carpet and Mastic - Green	NOT SAMPLED	02 - Main Office - Floor	Assumed	432 Square	No	Material has been REMOVED. Material was not likely replaced - changed within inspection to better describe color of the carpet surface.
1	01 - Main Building	21 MISC	Carpet and Mastic - Green	NOT SAMPLED	03 - Principal's Office - Floor	Assumed	240 Square	No	Material has been REMOVED. Comment: Unknown if material was misidentified during previous inspection. New material provided to better describe the material present.
1	01 - Main Building	22 MISC	Carpet and Mastic - Brown Multi	NOT SAMPLED	02 - Main Office - Floor	Assumed	432 Square	No	Material in GOOD condition. No change in material condition.
1	01 - Main Building	22 MISC	Carpet and Mastic - Brown Multi	NOT SAMPLED	03 - Principal's Office - Floor	Assumed	240 Square	No	Material in GOOD condition. No change in material condition.
1	01 - Main Building	22 MISC	Carpet and Mastic - Brown Multi	NOT SAMPLED	04 - Small Office - Floor	Assumed	81 Square	No	Material in GOOD condition. No change in material condition.

INSPECTED BY: Chris Chipponeri (EPA and OSHA accreditations attached)

Date Printed: 2/27/2017



# Hazard Management Services, Inc.

## AHERA Three Year Re-Inspection

Project Number: M17005K  
Date of Re-inspection: 2/13/2017

District: Central California Conference of 7th Day Adventist  
Site: West Valley S.D.A Elementary

#	Building Name	Mat'l # Class	Material	Sample Number(s)	Location	Percent Asbestos	Feet	Friable	Condition & Comments
1	01 - Main Building	23 MISC	4" Baseboard and Mastic - Blue	NOT SAMPLED	05 - Grades 3 & 4 - Baseboard	Assumed	132 Linear	No	Material in GOOD condition. No change in material condition.
1	01 - Main Building	23 MISC	4" Baseboard and Mastic - Blue	NOT SAMPLED	06 - Grades 1 & 2 - Baseboard	Assumed	144 Linear	No	Material in GOOD condition. No change in material condition.
1	01 - Main Building	23 MISC	4" Baseboard and Mastic - Blue	NOT SAMPLED	15 - Second Floor Hallway - Baseboard	Assumed	138 Linear	No	Material in GOOD condition. No change in material condition.
1	01 - Main Building	24 MISC	Carpet and Mastic - Blue	NOT SAMPLED	16 - Work Room A5 - Floor	Assumed	1944 Square	No	Material in GOOD condition. No change in material condition.
1	01 - Main Building	25 MISC	4" Baseboard and Mastic - White	NOT SAMPLED	04 - Small Office - Baseboard	Assumed	36 Linear	No	Material in GOOD condition. No change in material condition.
1	01 - Main Building	26 MISC	Drywall - Bare	NOT SAMPLED	14 - Attic - First Floor - Walls	Assumed	150 Square	No	Material in GOOD condition. No change in material condition. No joint compound or texture coat material associated with this drywall system.
1	01 - Main Building	27 MISC	Silver Duct Tape	NOT SAMPLED	14 - Attic - First Floor - Ducts	Assumed	15 Linear	No	Material in GOOD condition. No change in material condition.
1	01 - Main Building	0 NON	Concrete	NOT SAMPLED	Various Locations	Non-Suspect			No change in material condition.
1	01 - Main Building	0 NON	Fiberglass Insulation	NOT SAMPLED	14 - Attic - First Floor - Ducts	Non-Suspect	50 Linear	No	No change in material condition. No suspect material found below this insulation materi
1	01 - Main Building	0 NON	Metal	NOT SAMPLED	Various Locations	Non-Suspect			No change in material condition.
1	01 - Main Building	0 NON	None	NOT SAMPLED	Various Locations	Non-Suspect			No change in material condition. Material has been REMOVED.
1	01 - Main Building	0 NON	Wood	NOT SAMPLED	Various Locations	Non-Suspect			No change in material condition.
1	01 - Main Building	0 NON	Wood 2"	NOT SAMPLED	Various Locations	Non-Suspect			No change in material condition.

# Hazard Management Services, Inc.

## AHERA Three Year Re-Inspection

Project Number: M17005K  
Date of Re-inspection: 2/13/2017

District: Central California Conference of 7th Day Adventist  
Site: West Valley S.D.A Elementary

### 02 - Annex Classroom Building A

#	Building Name	Mat'l # Class	Material	Sample Number(s)	Location	Percent Asbestos	Feet	Friable	Condition & Comments
3	02 - Annex Classroom Building A	28 MISC	Carpet and Mastic - Red	NOT SAMPLED	01 - Classroom - Floor	Assumed	900 Square	No	Material in GOOD condition. No change in material condition.
3	02 - Annex Classroom Building A	28 MISC	Carpet and Mastic - Red	NOT SAMPLED	03 - Office Closet - Floor	Assumed	32 Square	No	Material in GOOD condition. No change in material condition.
3	02 - Annex Classroom Building A	29 MISC	Drywall - Smooth Texture Annex	NOT SAMPLED	01 - Classroom - Walls	Assumed	1632 Square	No	Material in GOOD condition. No change in material condition.
3	02 - Annex Classroom Building A	29 MISC	Drywall - Smooth Texture Annex	NOT SAMPLED	02 - Storage Space - Walls/Ceiling	Assumed	465 Square	No	Material in GOOD condition. No change in material condition.
3	02 - Annex Classroom Building A	29 MISC	Drywall - Smooth Texture Annex	NOT SAMPLED	03 - Office Closet - Walls/Ceiling	Assumed	248 Square	No	Material in GOOD condition. No change in material condition.
3	02 - Annex Classroom Building A	29 MISC	Drywall - Smooth Texture Annex	NOT SAMPLED	04 - Classroom East - Walls	Assumed	1080 Square	No	Material in GOOD condition. No change in material condition.
3	02 - Annex Classroom Building A	30 MISC	Carpet and Mastic - Tan	NOT SAMPLED	02 - Storage Space - Floor	Assumed	120 Square	No	Material in GOOD condition. No change in material condition.
3	02 - Annex Classroom Building A	31 MISC	Stucco	NOT SAMPLED	02 - Storage Space - Walls	Assumed	115 Square	No	Material in GOOD condition. No change in material condition.
3	02 - Annex Classroom Building A	32 MISC	Carpet and Mastic - Brown / Blue	NOT SAMPLED	04 - Classroom East - Floor	Assumed	243 Square	No	Material in GOOD condition. No change in material condition.
3	02 - Annex Classroom Building A	33 MISC	9" VFT and Mastic - Dark Brown	NOT SAMPLED	04 - Classroom East - Floor	Assumed	486 Square	No	Material in GOOD condition. No change in material condition.
3	02 - Annex Classroom Building A	34 MISC	12" VFT and Mastic - Grey Oatmeal	NOT SAMPLED	04 - Classroom East - Floor	Assumed	10 Square	No	Material in GOOD condition. No change in material condition.



# Hazard Management Services, Inc.

## ASHERA Three Year Re-Inspection

Project Number: M17005K  
 Date of Re-inspection: 2/13/2017

District: Central California Conference of 7th Day Adventist  
 Site: West Valley S.D.A Elementary

#	Building Name	Mat'l # Class	Material	Sample Number(s)	Location	Percent Asbestos	Feet	Friable	Condition & Comments
3	02 - Annex Classroom Building A	0 NON	Wood	NOT SAMPLED	Various Locations	Non-Suspect			No change in material condition.
3	02 - Annex Classroom Building A	0 NON	Wood 3" Baseboard	NOT SAMPLED	Various Locations	Non-Suspect			No change in material condition. Material is nailed onto wall surfaces.

# Hazard Management Services, Inc.

## AHERA Three Year Re-Inspection

Project Number: M17005K  
Date of Re-inspection: 2/13/2017

District: Central California Conference of 7th Day Adventist  
Site: West Valley S.D.A Elementary

### 03 - Annex Classroom Building B

Building Comment:

#	Building Name	Mat'l # Class	Material	Sample Number(s)	Location	Percent Asbestos	Feet	Friable	Condition & Comments
2	03 - Annex Classroom Building B	28 MISC	Carpet and Mastic - Red	NOT SAMPLED	07 - West Classroom - Floor	Assumed	960 Square	No	Material in GOOD condition. No change in material condition.
2	03 - Annex Classroom Building B	35 MISC	Drywall - Light Knockdown Texture	NOT SAMPLED	01 - Break Room - Walls/Ceiling	Assumed	528 Square	No	Material in GOOD condition. No change in material condition.
2	03 - Annex Classroom Building B	35 MISC	Drywall - Light Knockdown Texture	NOT SAMPLED	08 - Office - Walls/Ceiling	Assumed	528 Square	No	Material in GOOD condition. No change in material condition.
2	03 - Annex Classroom Building B	36 MISC	12" ACT and Glue - Multi Random Holes	NOT SAMPLED	01 - Break Room - Ceiling	Assumed	144 Square	No	Material in GOOD condition. No change in material condition.
2	03 - Annex Classroom Building B	36 MISC	12" ACT and Glue - Multi Random Holes	NOT SAMPLED	08 - Office - Ceiling	Assumed	144 Square	No	Material in GOOD condition. No change in material condition.
2	03 - Annex Classroom Building B	37 MISC	12" VFT and Mastic - Yellow/Tan Pattern	NOT SAMPLED	02 - East Classroom - Floor	Assumed	960 Square	No	Material in GOOD condition. No change in material condition.
2	03 - Annex Classroom Building B	38 MISC	Drywall - Large Knockdown Texture	NOT SAMPLED	02 - East Classroom - Walls	Assumed	1488 Square	No	Material in GOOD condition. No change in material condition.
2	03 - Annex Classroom Building B	38 MISC	Drywall - Large Knockdown Texture	NOT SAMPLED	07 - West Classroom - Walls	Assumed	1488 Square	No	Material in GOOD condition. No change in material condition.
2	03 - Annex Classroom Building B	39 MISC	2' x 2' ACTs	NOT SAMPLED	02 - East Classroom - Ceiling	Assumed	960 Square	No	Material in GOOD condition. No change in material condition.
2	03 - Annex Classroom Building B	39 MISC	2' x 2' ACTs	NOT SAMPLED	07 - West Classroom - Ceiling	Assumed	960 Square	No	Material in GOOD condition. No change in material condition.
2	03 - Annex Classroom Building B	40 MISC	Linoleum and Mastic - Grey Pebble	NOT SAMPLED	03 - East Classroom Restroom - Floor	Assumed	20 Square	No	Material in GOOD condition. No change in material condition.



# Hazard Management Services, Inc.

## AHRA Three Year Re-Inspection

**District:** Central California Conference of 7th Day Adventist  
**Site:** West Valley S.D.A Elementary

**Project Number:** M17005K  
**Date of Re-inspection:** 2/13/2017

#	Building Name	Mat'l # Class	Material	Sample Number(s)	Location	Percent Asbestos	Feet	Friable	Condition & Comments
2	03 - Annex Classroom Building B	40 MISC	Linoleum and Mastic - Grey Pebble	NOT SAMPLED	04 - Restroom - Floor	Assumed	150 Square	No	Material in GOOD condition. No change in material condition.
2	03 - Annex Classroom Building B	40 MISC	Linoleum and Mastic - Grey Pebble	NOT SAMPLED	06 - West Exterior Restroom - Floor	Assumed	150 Square	No	Material in GOOD condition. No change in material condition.
2	03 - Annex Classroom Building B	41 MISC	6" Baseboard and Mastic - Yellow/Tan	NOT SAMPLED	03 - East Classroom Restroom - Baseboard	Assumed	18 Linear	No	Material in GOOD condition. No change in material condition.
2	03 - Annex Classroom Building B	41 MISC	6" Baseboard and Mastic - Yellow/Tan	NOT SAMPLED	04 - Restroom - Baseboard	Assumed	50 Linear	No	Material in GOOD condition. No change in material condition.
2	03 - Annex Classroom Building B	42 MISC	Drywall - Stipple Finish	NOT SAMPLED	03 - East Classroom Restroom - Walls/Ceiling	Assumed	198 Square	No	Material in GOOD condition. No change in material condition.
2	03 - Annex Classroom Building B	42 MISC	Drywall - Stipple Finish	NOT SAMPLED	04 - Restroom - Walls/Ceiling	Assumed	600 Square	No	Material in GOOD condition. No change in material condition.
2	03 - Annex Classroom Building B	42 MISC	Drywall - Stipple Finish	NOT SAMPLED	06 - West Exterior Restroom - Walls/Ceiling	Assumed	600 Square	No	Material in GOOD condition. No change in material condition.
2	03 - Annex Classroom Building B	43 MISC	FRP and Glue - Painted	NOT SAMPLED	03 - East Classroom Restroom - Walls	Assumed	29 Square	No	Material in GOOD condition. No change in material condition.
2	03 - Annex Classroom Building B	43 MISC	FRP and Glue - Painted	NOT SAMPLED	04 - Restroom - Walls	Assumed	225 Square	No	Material in GOOD condition. No change in material condition.
2	03 - Annex Classroom Building B	43 MISC	FRP and Glue - Painted	NOT SAMPLED	06 - West Exterior Restroom - Walls	Assumed	225 Square	No	Material in GOOD condition. No change in material condition.
2	03 - Annex Classroom Building B	44 MISC	4" Baseboard and Glue - Off-White	NOT SAMPLED	03 - East Classroom Restroom - Baseboard	Assumed	6	No	Material in GOOD condition. No change in material condition.
2	03 - Annex Classroom Building B	45 MISC	9" VFT and Mastic - Brown / Green	NOT SAMPLED	05 - Supply Room - Floor	Assumed	18 Square	No	Material in GOOD condition. No change in material condition.

# Hazard Management Services, Inc.

## AHERA Three Year Re-Inspection

District: Central California Conference of 7th Day Adventist  
 Site: West Valley S.D.A Elementary

Project Number: M17005K  
 Date of Re-inspection: 2/13/2017

#	Building Name	Mat'l # Class	Material	Sample Number(s)	Location	Percent Asbestos	Feet	Friable	Condition & Comments
2	03 - Annex Classroom Building B	46 MISC	Drywall - Sand Texture	NOT SAMPLED	05 - Supply Room - Walls/Ceiling	Assumed	162 Square	No	Material in GOOD condition. No change in material condition.
2	03 - Annex Classroom Building B	47 MISC	6" Baseboard and Mastic - Blue	NOT SAMPLED	06 - West Exterior Restroom - Baseboard	Assumed	50 Linear	No	Material in GOOD condition. No change in material condition.
2	03 - Annex Classroom Building B	0 NON	Wood 2"	NOT SAMPLED	Various Locations	Non-Suspect			No change in material condition.
2	03 - Annex Classroom Building B	0 NON	Wood 3" Baseboard	NOT SAMPLED	Various Locations	Non-Suspect			No change in material condition. Material is nailed onto wall surfaces.
2	03 - Annex Classroom Building B	0 NON	Wood Laminate Flooring	NOT SAMPLED	Various Locations	Non-Suspect			No change in material condition.



**ASBESTOS HAZARD EMERGENCY RESPONSE ACT (AHERA)  
GENERAL DATA  
(FORM A)**

Inspection Date: May 20, 2014

LOCAL EDUCATION AGENCY				COUNTY	
Central California Conference of 7th Day Adventist				Santa Clara	
SCHOOL NAME				SCHOOL PHONE NUMBER	
West Valley S.D.A Elementary				(408) 378 - 4327	
ADDRESS (Number)		(Street)	(City)	(State)	(Zip)
95 Dot Avenue			Campbell	CA	95008
CDS CODE*	SCHOOL ENROLLMENT*	NO. SCHOOL EMPLOYEES*		NO. BUILDINGS AT SCHOOL	
43-69393-6980353	27	3		3	

**LEA AHERA DESIGNEE**

NAME			PHONE NUMBER		
Norma Maynez			(559) 347 - 3079		
ADDRESS (Number)		(Street)	(City)	(State)	(Zip)
2820 Willow Avenue			Clovis	CA	93612
TRAINING COURSE(S) AND DATE(S)					
Hazard Management Services, Inc.					

TOTAL TRAINING HOURS

6


**MANAGEMENT PLANNER**

NAME			PHONE NUMBER		
Chris Chipponeri			(209) 551 - 2000		
ADDRESS (Number)		(Street)	(City)	(State)	(Zip)
207 McHenry Ave			Modesto	CA	95355-1755
ACCREDITATION NUMBER		TRAINING AGENCY			
MP-R-147-16		Wangerin Environmental, Inc.			

DOCUMENTS ATTACHED (CHECK APPROPRIATE BOXES)

<input checked="" type="checkbox"/> Record of Friable and Non-Friable ACBM (Form B)	<input checked="" type="checkbox"/> Physical and Hazard Assessment of Friable ACBM or Friable Assumed ACBM (Form C)	<input type="checkbox"/> Operations and Maintenance Program	<input type="checkbox"/> Periodic Surveillance Plan
<input type="checkbox"/> Reinspection Plan (Form F)	<input type="checkbox"/> Parent/Employee Notification	<input type="checkbox"/> Resources Needed (Form H)	

We certify that the general Local Education Agency (LEA) responsibilities, as stipulated by 40 CFR Part 763, have been met or will be met and that this Management Plan includes all buildings at this school.

MANAGEMENT PLANNER SIGNATURE	DATE
	2/27/17
LEA DESIGNEE SIGNATURE	DATE
LEA SUPERINTENDENT SIGNATURE	DATE

Date Printed: 2/27/2017

# **RECORD OF FRIABLE AND NONFRIABLE ACM (FORM B)**

Inspection Date: February 13, 2017

					CDS CODE	
					43-69393-6980353	
SCHOOL					SCHOOL PHONE NUMBER	
West Valley S.D.A Elementary					(408) 378 - 4327	
ADDRESS	(Number)	(Street)	(City)	(State)	(Zip)	
95 Dot Avenue			Campbell	CA	95008	

**- IMPORTANT -**

Each building and functional space with friable ACBM or friable assumed ACBM listed on this form requires completion of FORM C (PHYSICAL AND HAZARD ASSESSMENT OF FRIABLE ACBM OR FRIABLE ASSUMED ACBM). Indicate location of material on blueprint, diagram or narrative in square or linear feet, and attach a copy (Sec. 763.93).

LINE	BUILDING NAME & FUNCTIONAL SPACE <i>(Indicate Address if Different From Above)</i>	CHECK ONE			CHECK ONE			
		SUR-FACING	TSI	MISC	ACBM		ASSUMED ACBM	
					FRIABLE	NON-FRIABLE	FRIABLE	NON-FRIABLE
1.	01 - Main Building - 9" VFT and Mastic - Tan with Speck			X			X	X
2.	01 - Main Building - 2" Baseboard and Mastic - Brown			X				X
3.	01 - Main Building - Drywall - Medium Texture			X			X	X
4.	01 - Main Building - ACT and Mastic - 12" Random Hole			X				X
5.	01 - Main Building - Carpet and Mastic - Blue Multi			X				X
6.	01 - Main Building - Ceramic Tile - 4" Grey w/Grout			X				X
7.	01 - Main Building - Linoleum and Mastic - Tan Squares			X				X
8.	01 - Main Building - 6" Baseboard and Mastic - Tan			X				X
9.	01 - Main Building - Drywall - Smooth Texture			X				X
10.	01 - Main Building - FRP and Mastic -White w/Scratch Pattern			X				X
11.	01 - Main Building - 9" VFT and Mastic - Beige w/Speck			X				X
12.	01 - Main Building - 4" Baseboard and Mastic - Brown			X				X
13.	01 - Main Building - 4" Baseboard and Mastic - Green			X				X
14.	01 - Main Building - Ceramic Tile - 6" White w/Speck-Grout			X				X
15.	01 - Main Building - FRP and Mastic - White			X				X
16.	01 - Main Building - Carpet and Mastic - Blue			X				X
17.	01 - Main Building - Ceramic Tile - Light Yellow w/Grout			X				X
18.	01 - Main Building - HVAC Duct Tape			X			X	
19.	01 - Main Building - Foil Tape			X				X
20.	01 - Main Building - CMU and Mortar			X				X

See attached 'Homogeneous Materials Records' for all materials and their locations by building. On Form B all buildings are listed, and a summary of all non-friable and friable materials is provided. Friable materials and their locations are listed separately under each building on Form B.

Date Printed: 2/27/2017

# **RECORD OF FRIABLE AND NONFRIABLE ACM (FORM B)**

Inspection Date: February 13, 2017

					CDS CODE	
					43-69393-6980353	
SCHOOL					SCHOOL PHONE NUMBER	
West Valley S.D.A Elementary					(408) 378 - 4327	
ADDRESS	(Number)	(Street)	(City)	(State)	(Zip)	
95 Dot Avenue			Campbell	CA	95008	

**- IMPORTANT -**

Each building and functional space with friable ACM or friable assumed ACM listed on this form requires completion of FORM C (PHYSICAL AND HAZARD ASSESSMENT OF FRIABLE ACM OR FRIABLE ASSUMED ACM). Indicate location of material on blueprint, diagram or narrative in square or linear feet, and attach a copy (Sec. 763.93).

LINE	BUILDING NAME & FUNCTIONAL SPACE <i>(Indicate Address if Different From Above)</i>	CHECK ONE			CHECK ONE			
		SUR-FACING	TSI	MISC	ACBM		ASSUMED ACMB	
					FRIABLE	NON-FRIABLE	FRIABLE	NON-FRIABLE
21.	01 - Main Building - Carpet and Mastic - Brown Multi			X				X
22.	01 - Main Building - 4" Baseboard and Mastic - Blue			X				X
23.	01 - Main Building - Carpet and Mastic - Blue			X				X
24.	01 - Main Building - 4" Baseboard and Mastic - White			X				X
25.	01 - Main Building - Drywall - Bare			X				X
26.	01 - Main Building - Silver Duct Tape			X				X
27.	02 - Annex Classroom Building A - Carpet and Mastic - Red			X				X
28.	02 - Annex Classroom Building A - Drywall - Smooth Texture Annex			X				X
29.	02 - Annex Classroom Building A - Carpet and Mastic - Tan			X				X
30.	02 - Annex Classroom Building A - Stucco			X				X
31.	02 - Annex Classroom Building A - Carpet and Mastic - Brown / Blue			X				X
32.	02 - Annex Classroom Building A - 9" VFT and Mastic - Dark Brown			X				X
33.	02 - Annex Classroom Building A - 12" VFT and Mastic - Grey Oatmeal			X				X
34.	03 - Annex Classroom Building B - Carpet and Mastic - Red			X				X
35.	03 - Annex Classroom Building B - Drywall - Light Knockdown Texture			X				X
36.	03 - Annex Classroom Building B - 12" ACT and Glue - Multi Random Holes			X				X

See attached 'Homogeneous Materials Records' for all materials and their locations by building. On Form B all buildings are listed, and a summary of all non-friable and friable materials is provided. Friable materials and their locations are listed separately under each building on Form B.

Date Printed: 2/27/2017

# **RECORD OF FRIABLE AND NONFRIABLE ACM (FORM B)**

Inspection Date: February 13, 2017

					CDS CODE 43-69393-6980353	
SCHOOL West Valley S.D.A Elementary					SCHOOL PHONE NUMBER (408) 378 - 4327	
ADDRESS	(Number)	(Street)	(City)	(State)	(Zip)	
95 Dot Avenue			Campbell	CA	95008	

**- IMPORTANT -**

Each building and functional space with friable ACM or friable assumed ACM listed on this form requires completion of FORM C (PHYSICAL AND HAZARD ASSESSMENT OF FRIABLE ACM OR FRIABLE ASSUMED ACM). Indicate location of material on blueprint, diagram or narrative in square or linear feet, and attach a copy (Sec. 763.93).

LINE	BUILDING NAME & FUNCTIONAL SPACE <i>(Indicate Address if Different From Above)</i>	CHECK ONE			CHECK ONE			
		SUR-FACING	TSI	MISC	ACBM		ASSUMED ACMB	
					FRIABLE	NON-FRIABLE	FRIABLE	NON-FRIABLE
37.	03 - Annex Classroom Building B - 12" VFT and Mastic - Yellow/Tan Pattern			X				X
38.	03 - Annex Classroom Building B - Drywall - Large Knockdown Texture			X				X
39.	03 - Annex Classroom Building B - 2' x 2' ACTs			X				X
40.	03 - Annex Classroom Building B - Linoleum and Mastic - Grey Pebble			X				X
41.	03 - Annex Classroom Building B - 6" Baseboard and Mastic - Yellow/Tan			X				X
42.	03 - Annex Classroom Building B - Drywall - Stipple Finish			X				X
43.	03 - Annex Classroom Building B - FRP and Glue - Painted			X				X
44.	03 - Annex Classroom Building B - 4" Baseboard and Glue - Off-White			X				X
45.	03 - Annex Classroom Building B - 9" VFT and Mastic - Brown / Green			X				X
46.	03 - Annex Classroom Building B - Drywall - Sand Texture			X				X
47.	03 - Annex Classroom Building B - 6" Baseboard and Mastic - Blue			X				X

See attached 'Homogeneous Materials Records' for all materials and their locations by building. On Form B all buildings are listed, and a summary of all non-friable and friable materials is provided. Friable materials and their locations are listed separately under each building on Form B.

Date Printed: 2/27/2017



# HAZARD MANAGEMENT SERVICES, INC.

## PHYSICAL AND HAZARD ASSESSMENT OF FRIABLE ACBM OR FRIABLE ASSUMED ACBM (SEC. 763.93) (FORM C)

DISTRICT Central California Conference of 7th Day Adventist	CDS CODE 43-69393-6980353
SCHOOL West Valley S.D.A Elementary	SCHOOL PHONE NUMBER (408) 378 - 4327
ADDRESS 95 Dot Avenue Campbell, CA 95008	
BUILDING NAME 01 - Main Building	INSPECTION DATE February 13, 2017
FUNCTIONAL SPACE 17 - HVAC Closet A5	LINE NO. FROM FORM B 1
TYPE OF FRIABLE ACBM MISC - 9" VFT and Mastic - Tan with Speck - Assumed	

1. **CONDITION OF ACBM** (Overall Rating)      Damaged

2. **POTENTIAL FOR DISTURBANCE** (Overall Rating)      Moderate

3. **HAZARD ASSESSMENT** (Combine Ratings From Items 1 and 2 and Check Appropriate Box)

CONDITION OF ACBM	POTENTIAL FOR DISTURBANCE		
	LOW	MODERATE	HIGH
GOOD	1	2	3
DAMAGED	4	5 <b>XXX</b>	6
SIGNIFICANTLY DAMAGED	7	7	7

### 4. RECOMMENDED RESPONSE ACTION(S) AND COST(S)

RESPONSE ACTION	ESTIMATED COSTS
<input type="checkbox"/> A. OPERATION AND MAINTENANCE .....	\$ 0.00
<input checked="" type="checkbox"/> B. REPAIR .....	\$ 180.00
<input type="checkbox"/> C. ENCAPSULATION .....	\$ 0.00
<input type="checkbox"/> D. ENCLOSURE .....	\$ 0.00
<input checked="" type="checkbox"/> E. REMOVAL .....	\$ 420.00
<b>Total Cost</b>	<b>\$ 600.00</b>

### 5. NARRATIVE OF RECOMMENDED RESPONSE

(Attach Additional Sheets If Necessary)

B. This material must be repaired as soon as possible. Any and all debris generated from this material must be cleaned up - access to this area should be restricted until this response action is complete.

E. Removal of this material is the long term goal. Although removal may not be immediately required, a cost for removal has been included for budgeting purposes.

SCHEDULE	
START	FINISH
08/13/17	02/17/20
08/13/17	02/13/20

Comments:

# HAZARD MANAGEMENT SERVICES, INC.

## PHYSICAL AND HAZARD ASSESSMENT OF FRIABLE ACBM OR FRIABLE ASSUMED ACBM (SEC. 763.93) (FORM C)

DISTRICT Central California Conference of 7th Day Adventist	CDS CODE 43-69393-6980353
SCHOOL West Valley S.D.A Elementary	SCHOOL PHONE NUMBER (408) 378 - 4327
ADDRESS 95 Dot Avenue Campbell, CA 95008	
BUILDING NAME 01 - Main Building	INSPECTION DATE February 13, 2017
FUNCTIONAL SPACE 17 - HVAC Closet A5	LINE NO. FROM FORM B 3
TYPE OF FRIABLE ACBM MISC - Drywall - Medium Texture - Assumed	

1. **CONDITION OF ACBM** (Overall Rating)      Damaged

2. **POTENTIAL FOR DISTURBANCE** (Overall Rating)      Moderate

3. **HAZARD ASSESSMENT** (Combine Ratings From Items 1 and 2 and Check Appropriate Box)

CONDITION OF ACBM	POTENTIAL FOR DISTURBANCE		
	LOW	MODERATE	HIGH
GOOD	1	2	3
DAMAGED	4	5 <b>XXX</b>	6
SIGNIFICANTLY DAMAGED	7	7	7

### 4. RECOMMENDED RESPONSE ACTION(S) AND COST(S)

RESPONSE ACTION	ESTIMATED COSTS
<input type="checkbox"/> A. OPERATION AND MAINTENANCE .....	\$ 0.00
<input checked="" type="checkbox"/> B. REPAIR .....	\$ 96.00
<input type="checkbox"/> C. ENCAPSULATION .....	\$ 0.00
<input type="checkbox"/> D. ENCLOSURE .....	\$ 0.00
<input checked="" type="checkbox"/> E. REMOVAL .....	\$ 1,520.00
<b>Total Cost</b>	<b>\$ 1,616.00</b>

### 5. NARRATIVE OF RECOMMENDED RESPONSE

(Attach Additional Sheets If Necessary)

B. This material must be repaired as soon as possible. Any and all debris generated from this material must be cleaned up - access to this area should be restricted until this response action is complete.

E. Removal of this material is the long term goal. Although removal may not be immediately required, a cost for removal has been included for budgeting purposes.

SCHEDULE	
START	FINISH
08/13/17	02/13/20
08/13/17	02/13/20

Comments:

# HAZARD MANAGEMENT SERVICES, INC.

## PHYSICAL AND HAZARD ASSESSMENT OF FRIABLE ACBM OR FRIABLE ASSUMED ACBM (SEC. 763.93) (FORM C)

DISTRICT	Central California Conference of 7th Day Adventist	CDS CODE	43-69393-6980353
SCHOOL	West Valley S.D.A Elementary	SCHOOL PHONE NUMBER	(408) 378 - 4327
ADDRESS	95 Dot Avenue Campbell, CA 95008		
BUILDING NAME	01 - Main Building	INSPECTION DATE	February 13, 2017
FUNCTIONAL SPACE	17 - HVAC Closet A5	LINE NO. FROM FORM B	3
TYPE OF FRIABLE ACBM	MISC - Drywall - Medium Texture - Assumed		

1. **CONDITION OF ACBM** (Overall Rating)      Significantly Damaged

2. **POTENTIAL FOR DISTURBANCE** (Overall Rating)      Moderate

3. **HAZARD ASSESSMENT** (Combine Ratings From Items 1 and 2 and Check Appropriate Box)

CONDITION OF ACBM	POTENTIAL FOR DISTURBANCE		
	LOW	MODERATE	HIGH
GOOD	1	2	3
DAMAGED	4	5	6
SIGNIFICANTLY DAMAGED	7	7    XXX	7

### 4. RECOMMENDED RESPONSE ACTION(S) AND COST(S)

RESPONSE ACTION	ESTIMATED COSTS
<input type="checkbox"/> A. OPERATION AND MAINTENANCE .....	\$ 0.00
<input checked="" type="checkbox"/> B. REPAIR .....	\$ 600.00
<input type="checkbox"/> C. ENCAPSULATION .....	\$ 0.00
<input type="checkbox"/> D. ENCLOSURE .....	\$ 0.00
<input checked="" type="checkbox"/> E. REMOVAL .....	\$ 420.00
<b>Total Cost</b>	<b>\$ 1,020.00</b>

### 5. NARRATIVE OF RECOMMENDED RESPONSE

(Attach Additional Sheets If Necessary)

B. This material must be repaired as soon as possible. Any and all debris generated from this material must be cleaned up - access to this area should be restricted until this response action is complete.

E. Removal of this material is the long term goal. Although removal may not be immediately required, a cost for removal has been included for budgeting purposes.

SCHEDULE	
START	FINISH
08/13/17	02/13/20
08/13/17	02/13/20

Comments:

# HAZARD MANAGEMENT SERVICES, INC.

## PHYSICAL AND HAZARD ASSESSMENT OF FRIABLE ACBM OR FRIABLE ASSUMED ACBM (SEC. 763.93) (FORM C)

DISTRICT	Central California Conference of 7th Day Adventist	CDS CODE	43-69393-6980353
SCHOOL	West Valley S.D.A Elementary	SCHOOL PHONE NUMBER	(408) 378 - 4327
ADDRESS	95 Dot Avenue Campbell, CA 95008		
BUILDING NAME	01 - Main Building	INSPECTION DATE	February 13, 2017
FUNCTIONAL SPACE	17 - HVAC Closet A5	LINE NO. FROM FORM B	18
TYPE OF FRIABLE ACBM	MISC - HVAC Duct Tape - Assumed		

1. **CONDITION OF ACBM** (Overall Rating) Good

2. **POTENTIAL FOR DISTURBANCE** (Overall Rating) Low

3. **HAZARD ASSESSMENT** (Combine Ratings From Items 1 and 2 and Check Appropriate Box)

CONDITION OF ACBM	POTENTIAL FOR DISTURBANCE		
	LOW	MODERATE	HIGH
GOOD	1 <b>XXX</b>	2	3
DAMAGED	4	5	6
SIGNIFICANTLY DAMAGED	7	7	7

### 4. RECOMMENDED RESPONSE ACTION(S) AND COST(S)

RESPONSE ACTION	ESTIMATED COSTS
<input checked="" type="checkbox"/> A. OPERATION AND MAINTENANCE .....	\$ 150.00
<input type="checkbox"/> B. REPAIR .....	\$ 0.00
<input type="checkbox"/> C. ENCAPSULATION .....	\$ 0.00
<input type="checkbox"/> D. ENCLOSURE .....	\$ 0.00
<input type="checkbox"/> E. REMOVAL .....	\$ 0.00

**Total Cost** \$ 150.00

### 5. NARRATIVE OF RECOMMENDED RESPONSE

(Attach Additional Sheets If Necessary)

A. This material should be reinspected every 6 months and every 3 years in accordance with AHERA 40 CFR 763.85.

SCHEDULE	
START	FINISH
08/13/17	02/13/20

Comments: No damage seen to this material in this location.



# Material Picture Log

## Hazard Management Services, Inc.

**Client:** Central California Conference of 7th Day Adventist

**Site:** West Valley S.D.A Elementary

---



Material: Wood Laminate Flooring  
HMR #: 0  
Asb:  
Comment:



Material: 9" VFT and Mastic - Tan with Speck  
HMR #: 1  
Asb:  
Comment:



Material: 2" Baseboard and Mastic - Brown  
HMR #: 2  
Asb:  
Comment:



Material: Drywall - Medium Texture  
HMR #: 3  
Asb:  
Comment:



Material: ACT and Mastic - 12" Random Hole  
HMR #: 4  
Asb:  
Comment:



Material: Carpet and Mastic - Blue Multi  
HMR #: 5  
Asb:  
Comment:

# Material Picture Log

## Hazard Management Services, Inc.

**Client:** Central California Conference of 7th Day Adventist

**Site:** West Valley S.D.A Elementary

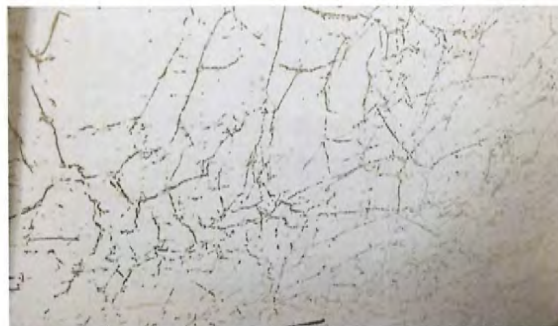
---



Material: Ceramic Tile - 4" Grey w/Grout  
HMR #: 6  
Asb:  
Comment:



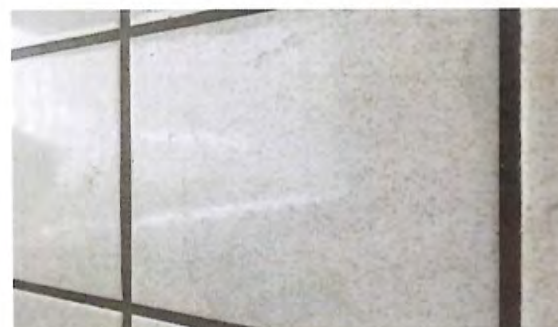
Material: Drywall - Smooth Texture  
HMR #: 9  
Asb:  
Comment:



Material: FRP and Mastic -White w/Scratch Pattern  
HMR #: 10  
Asb:  
Comment:



Material: 9" VFT and Mastic - Beige w/Speck  
HMR #: 11  
Asb:  
Comment:



Material: Ceramic Tile - 6" White w/Speck-Grout  
HMR #: 14  
Asb:  
Comment:



Material: FRP and Mastic - White  
HMR #: 15  
Asb:  
Comment:



# Material Picture Log

Hazard Management Services, Inc.

Client: Central California Conference of 7th Day Adventist

Site: West Valley S.D.A Elementary

---



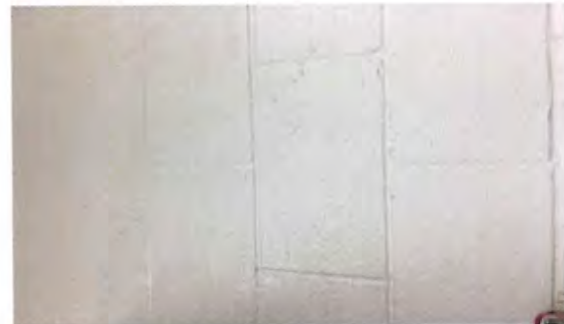
Material: Ceramic Tile - Light Yellow w/Grout  
HMR #: 17  
Asb:  
Comment:



Material: HVAC Duct Tape  
HMR #: 18  
Asb:  
Comment:



Material: Foil Tape  
HMR #: 19  
Asb:  
Comment:



Material: CMU and Mortar  
HMR #: 20  
Asb:  
Comment:



Material: Carpet and Mastic - Brown Multi  
HMR #: 22  
Asb:  
Comment:



Material: 4" Baseboard and Mastic - Blue  
HMR #: 23  
Asb:  
Comment:



# Material Picture Log

Hazard Management Services, Inc.

Client: Central California Conference of 7th Day Adventist

Site: West Valley S.D.A Elementary

---



Material: Carpet and Mastic - Blue  
HMR #: 24  
Asb:  
Comment:



Material: 4" Baseboard and Mastic - White  
HMR #: 25  
Asb:  
Comment:



Material: Drywall - Bare  
HMR #: 26  
Asb:  
Comment: No joint compound or texture coat material associated with this drywall system.



Material: Silver Duct Tape  
HMR #: 27  
Asb:  
Comment:



Material: Carpet and Mastic - Red  
HMR #: 28  
Asb:  
Comment:



Material: Drywall - Smooth Texture Annex  
HMR #: 29  
Asb:  
Comment:



# Material Picture Log

## Hazard Management Services, Inc.

**Client:** Central California Conference of 7th Day Adventist

**Site:** West Valley S.D.A Elementary

---



Material: Carpet and Mastic - Tan  
HMR #: 30  
Asb:  
Comment:



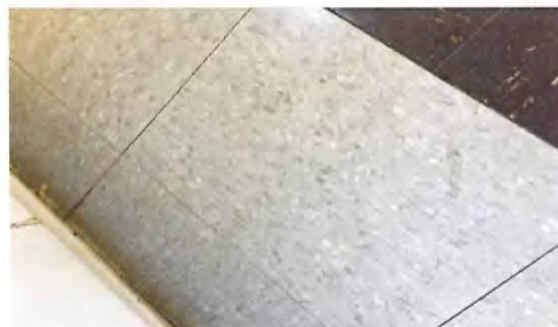
Material: Stucco  
HMR #: 31  
Asb:  
Comment:



Material: Carpet and Mastic - Brown / Blue  
HMR #: 32  
Asb:  
Comment:



Material: 9" VFT and Mastic - Dark Brown  
HMR #: 33  
Asb:  
Comment:



Material: 12" VFT and Mastic - Grey Oatmeal  
HMR #: 34  
Asb:  
Comment:



Material: Drywall - Light Knockdown Texture  
HMR #: 35  
Asb:  
Comment:

# Material Picture Log

## Hazard Management Services, Inc.

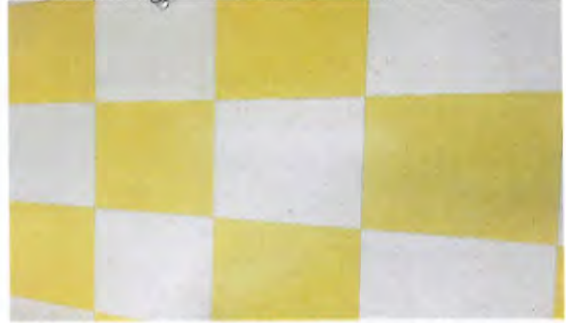
**Client:** Central California Conference of 7th Day Adventist

**Site:** West Valley S.D.A Elementary

---



Material: 12" ACT and Glue - Multi Random Holes  
HMR #: 36  
Asb:  
Comment:



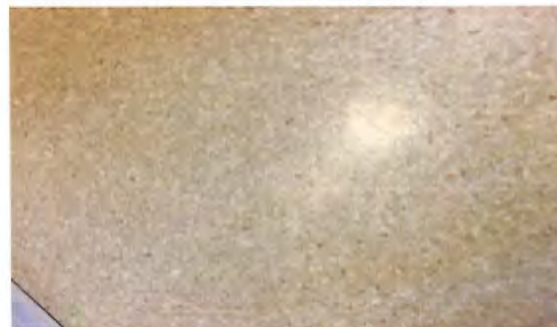
Material: 12" VFT and Mastic - Yellow/Tan Pattern  
HMR #: 37  
Asb:  
Comment:



Material: Drywall - Large Knockdown Texture  
HMR #: 38  
Asb:  
Comment:



Material: 2' x 2' ACTs  
HMR #: 39  
Asb:  
Comment:



Material: Linoleum and Mastic - Grey Pebble  
HMR #: 40  
Asb:  
Comment:



Material: 6" Baseboard and Mastic - Yellow/Tan  
HMR #: 41  
Asb:  
Comment:



# Material Picture Log

Hazard Management Services, Inc.

Client: Central California Conference of 7th Day Adventist

Site: West Valley S.D.A Elementary

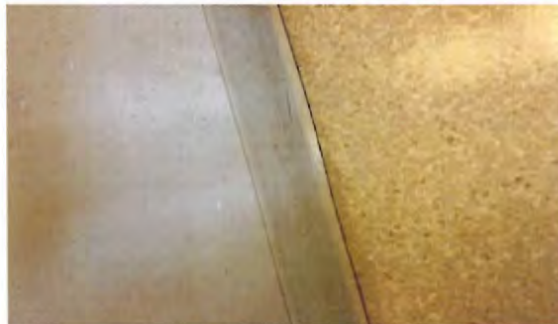
---



Material: Drywall - Stipple Finish  
HMR #: 42  
Asb:  
Comment:



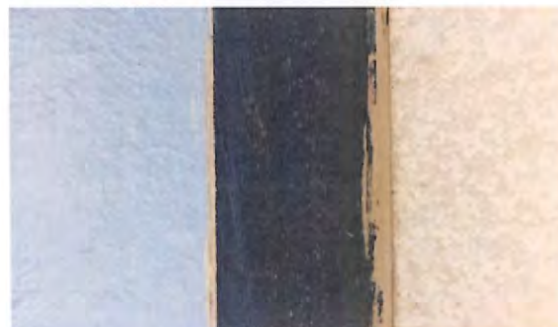
Material: FRP and Glue - Painted  
HMR #: 43  
Asb:  
Comment:



Material: 4" Baseboard and Glue - Off-White  
HMR #: 44  
Asb:  
Comment:

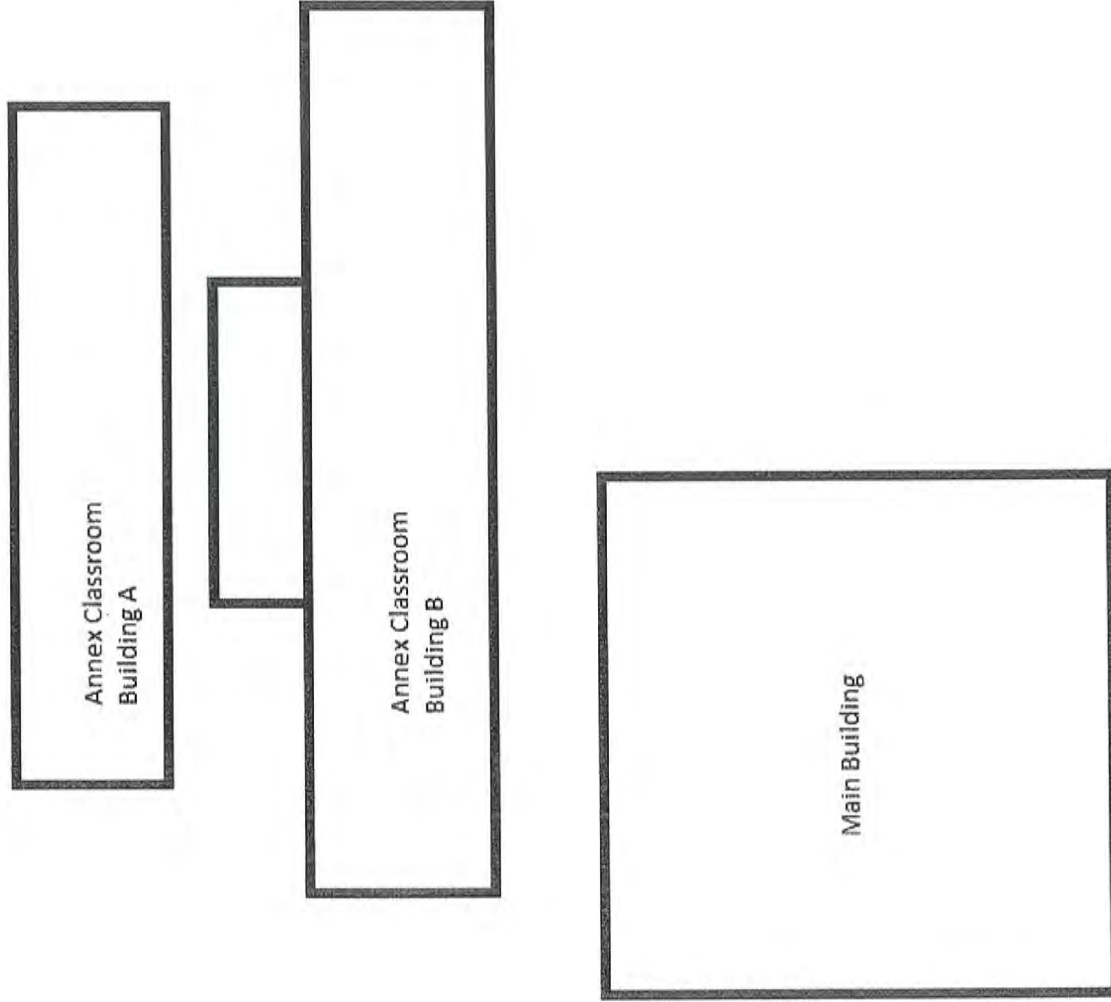


Material: 9" VFT and Mastic - Brown / Green  
HMR #: 45  
Asb:  
Comment:

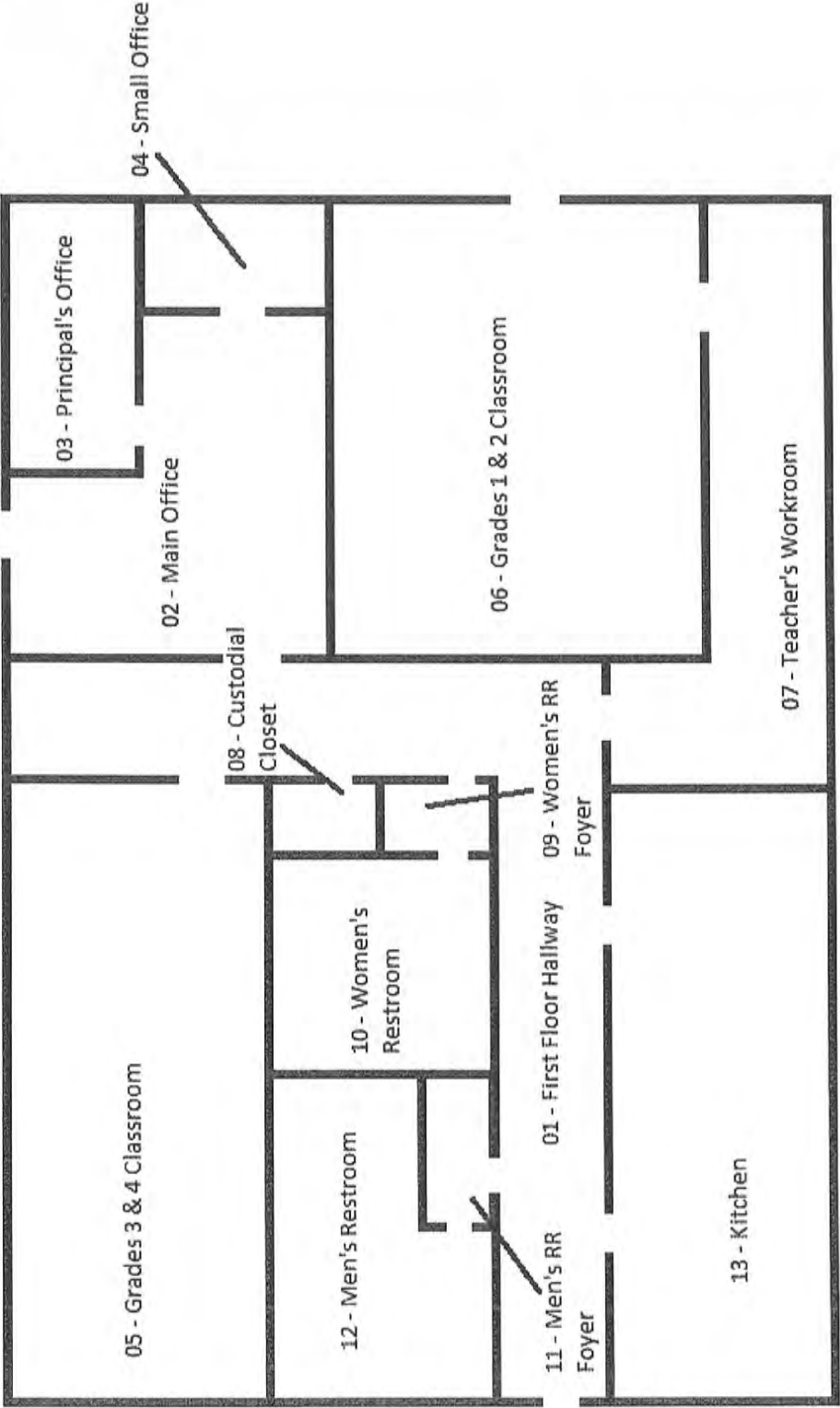


Material: 6" Baseboard and Mastic - Blue  
HMR #: 47  
Asb:  
Comment:

West Valley Christian School  
95 Dot Avenue  
Campbell, CA 95008  
M17005K  
02/13/17  
Site Map  
Not to Scale

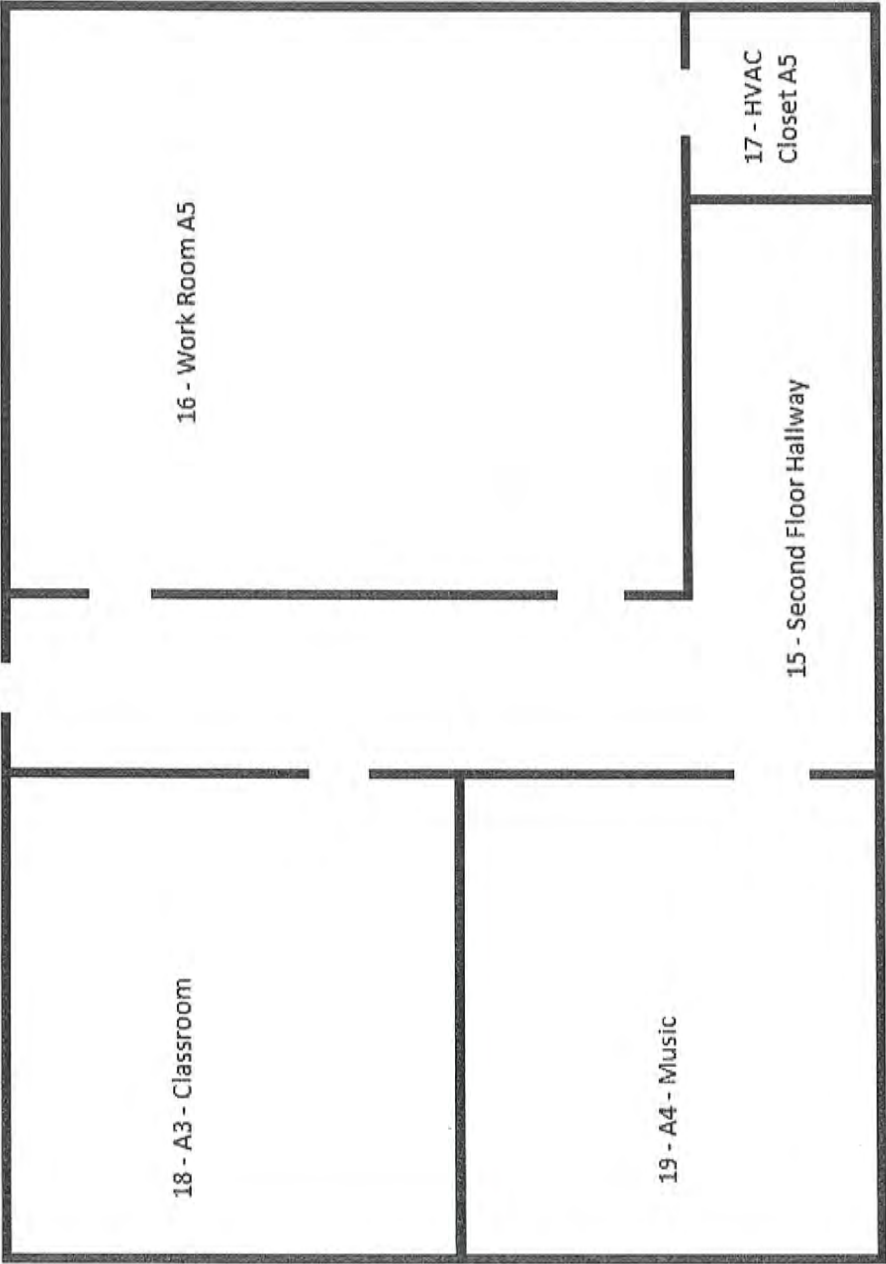


West Valley Christian School  
Main Building  
First Floor  
M17005K  
02/13/17  
95 Dot Avenue  
Campbell, CA 95008  
Not to Scale

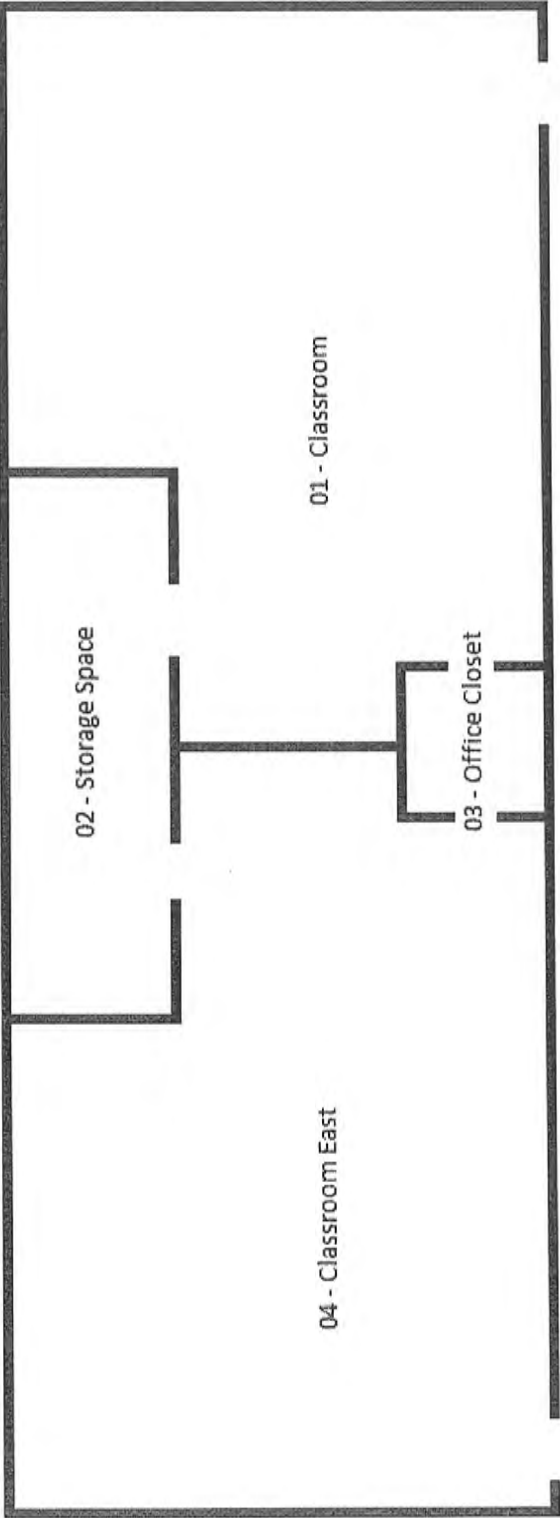


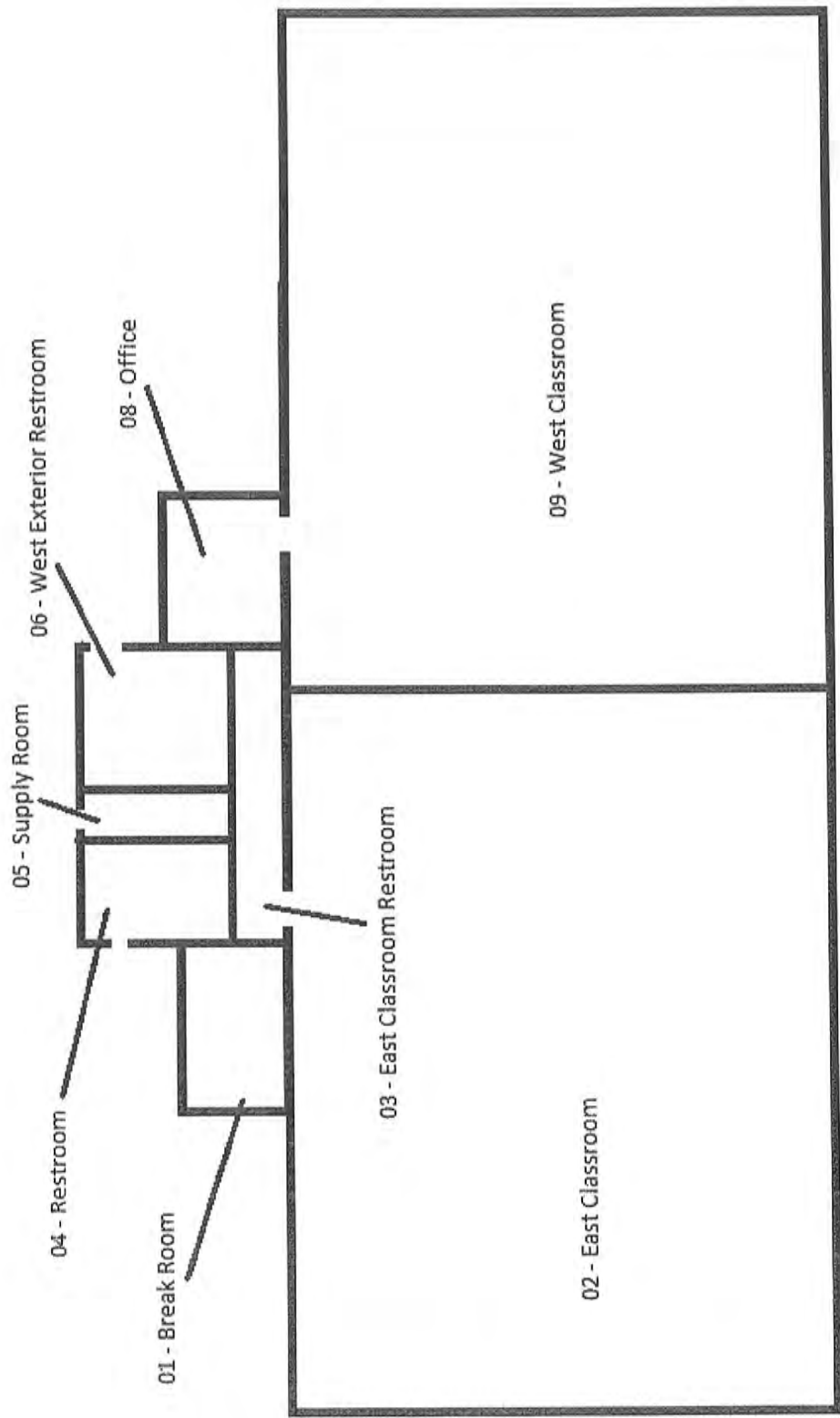


West Valley Christian School  
Main Building  
Second Floor  
M17005K  
02/13/17  
95 Dot Avenue  
Campbell, CA 95008  
Not to Scale



West Valley Christian School  
Building 02 - Annex Classroom Building A  
M17005K  
02/13/17  
95 Dot Avenue  
Campbell, CA 95008





Annex Classroom Building B

M17005K

02/13/17

95 Dot Avenue

Campbell, CA 95008

Not to Scale